



SZABO SCANDIC

Part of Europa Biosite

Produktinformation



Forschungsprodukte & Biochemikalien



Zellkultur & Verbrauchsmaterial



Diagnostik & molekulare Diagnostik



Laborgeräte & Service

Weitere Information auf den folgenden Seiten!
See the following pages for more information!



Lieferung & Zahlungsart

siehe unsere [Liefer- und Versandbedingungen](#)

Zuschläge

- Mindermengenzuschlag
- Trockeneiszuschlag
- Gefahrgutzuschlag
- Expressversand

SZABO-SCANDIC HandelsgmbH

Quellenstraße 110, A-1100 Wien

T. +43(0)1 489 3961-0

F. +43(0)1 489 3961-7

mail@szabo-scandic.com

www.szabo-scandic.com

[linkedin.com/company/szaboscandic](https://www.linkedin.com/company/szaboscandic)

MAP3K3 purified MaxPab rabbit polyclonal antibody (D03P) MaxPab®

Catalog # : H00004215-D03P

規格 : [100 ug]

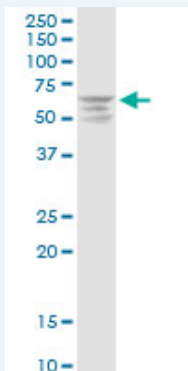
[List All](#)

Specification

Product Description:	Rabbit polyclonal antibody raised against a full-length human MAP3K3 protein.
Immunogen:	MAP3K3 (AAH10464.1, 1 a.a. ~ 90 a.a) full-length human protein.
Sequence:	MNEANMMLPYSGKEEPVLPVAMTLPLPGRGPRCGTAATEGGSSFVNAV VSVLQVGVTLMMLYPVSKLETVCALWALSTPALGLGLGCIEKS
Host:	Rabbit
Reactivity:	Human
Quality Control Testing:	Antibody reactive against mammalian transfected lysate.
Storage Buffer:	In 1x PBS, pH 7.4
Storage Instruction:	Store at -20°C or lower. Aliquot to avoid repeated freezing and thawing.
MSDS:	Download
Datasheet:	Download

Applications

Western Blot (Cell lysate)



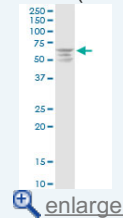
MAP3K3 MaxPab rabbit polyclonal antibody. Western Blot analysis of MAP3K3 expression in HeLa.

[Protocol Download](#)

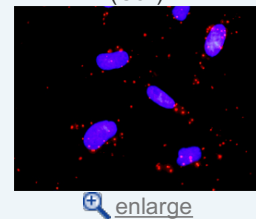
In situ Proximity Ligation Assay (Cell)

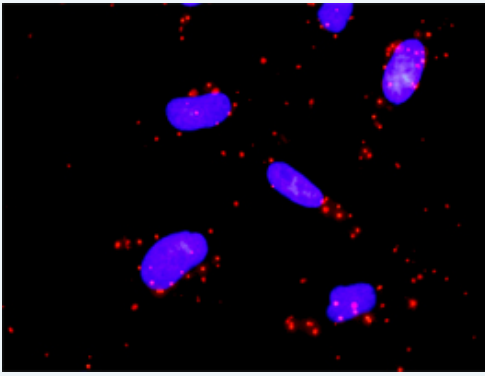
Application Image

Western Blot (Cell lysate)



In situ Proximity Ligation Assay (Cell)





Proximity Ligation Analysis of protein-protein interactions between MAP3K3 and MAP2K5. HeLa cells were stained with anti-MAP3K3 rabbit purified polyclonal 1:1200 and anti-MAP2K5 mouse monoclonal antibody 1:50. Each red dot represents the detection of protein-protein interaction complex, and nuclei were counterstained with DAPI (blue).

Gene Information

Entrez GeneID: [4215](#)

GeneBank Accession#: [BC010464.1](#)

Protein Accession#: [AAH10464.1](#)

Gene Name: MAP3K3

Gene Alias: MAPKKK3,MEKK3

Gene Description: mitogen-activated protein kinase kinase kinase 3

Omim ID: [602539](#)

Gene Ontology: [Hyperlink](#)

Gene Summary: This gene product is a 626-amino acid polypeptide that is 96.5% identical to mouse Mekk3. Its catalytic domain is closely related to those of several other kinases, including mouse Mekk2, tobacco NPK, and yeast Ste11. Northern blot analysis revealed a 4.6-kb transcript that appears to be ubiquitously expressed. This protein directly regulates the stress-activated protein kinase (SAPK) and extracellular signal-regulated protein kinase (ERK) pathways by activating SEK and MEK1/2 respectively; it does not regulate the p38 pathway. In cotransfection assays, it enhanced transcription from a nuclear factor kappa-B (NFKB)-dependent reporter gene, consistent with a role in the SAPK pathway. Alternatively spliced transcript variants encoding distinct isoforms have been observed. [provided by RefSeq]

Other Designations: MAP/ERK kinase kinase 3,MAPK/ERK kinase kinase 3

Gene Pathway

[GnRH signaling pathway](#) [MAPK signaling pathway](#) [Neurotrophin signaling pathway](#)

Related Disease

[Cardiovascular Diseases](#) [Diabetes Mellitus, Type 2](#) [Edema](#)
