



# SZABO SCANDIC

Part of Europa Biosite

## Produktinformation



Forschungsprodukte & Biochemikalien



Zellkultur & Verbrauchsmaterial



Diagnostik & molekulare Diagnostik



Laborgeräte & Service

Weitere Information auf den folgenden Seiten!  
See the following pages for more information!



### Lieferung & Zahlungsart

siehe unsere [Liefer- und Versandbedingungen](#)

### Zuschläge

- Mindermengenzuschlag
- Trockeneiszuschlag
- Gefahrgutzuschlag
- Expressversand

### SZABO-SCANDIC HandelsgmbH

Quellenstraße 110, A-1100 Wien

T. +43(0)1 489 3961-0

F. +43(0)1 489 3961-7

[mail@szabo-scandic.com](mailto:mail@szabo-scandic.com)

[www.szabo-scandic.com](http://www.szabo-scandic.com)

[linkedin.com/company/szaboscandic](https://www.linkedin.com/company/szaboscandic) 

# MEN1 purified MaxPab rabbit polyclonal antibody (D01P) MaxPab®

Catalog # : H00004221-D01P

規格 : [ 100 ug ]

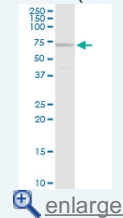
[List All](#)

## Specification

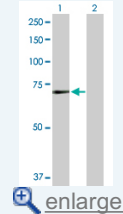
<b>Product Description:</b>	Rabbit polyclonal antibody raised against a full-length human MEN1 protein.
<b>Immunogen:</b>	MEN1 (AAH02544.1, 1 a.a. ~ 575 a.a) full-length human protein.
<b>Sequence:</b>	MGLKAAQKTLFPLRSIDDVRLFAAELGREEPDLVLLSLVLGFVEHFLAV NRVIPTNVPELTFQSPAPDPPGGLTYFPVADLSIIAALYARFTAQIRGAV DLSLYPREGGVSSRELVKVSDVIWNSLSRSYFKDRAHIQSLFSFITGTKL DSSGVAFAVGACQALGLRDVHLALSEDHAWSWLYLKGSYMRCDRKM EVAFMVCAINPSIDLHTDSLELLQLQKLLWLLYDLGHLERYPMALGNLA DLEELEPTGRPDPLTYHKGIASAKTYRDEHIYPMYLAGYHCRNRNV REALQAWADTATVIQDYNCREDEEIKYKFEVANDVIPNLLKEAASLLEA GEERPGEQSQGTQSQGSALQDPECFHLLRFYDGICKWEEGSPTPVLH VGWATFLVQSLGRFEGQVRQKVRIVSREAEAAEAEPPWGEAEAREGRR RGPRESKPEEPPPKPALDKGLGTGQGAVSGPPRPPGTVAGTAR GPEGGSTAQVPAPAASPPPEGPVLTQSEKMKGMKELLVATKINSSAIKL QLTAQSQVQMKKQKVSTPSDYTLNFLKQRKGL
<b>Host:</b>	Rabbit
<b>Reactivity:</b>	Human
<b>Quality Control Testing:</b>	Antibody reactive against mammalian transfected lysate.
<b>Storage Buffer:</b>	In 1x PBS, pH 7.4
<b>Storage Instruction:</b>	Store at -20°C or lower. Aliquot to avoid repeated freezing and thawing.
<b>MSDS:</b>	<a href="#">Download</a>
<b>Datasheet:</b>	<a href="#">Download</a>

## Application Image

Western Blot (Cell lysate)

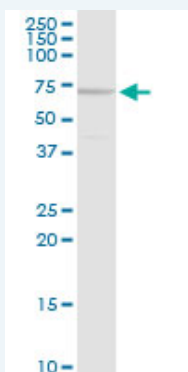


Western Blot (Transfected lysate)



## Applications

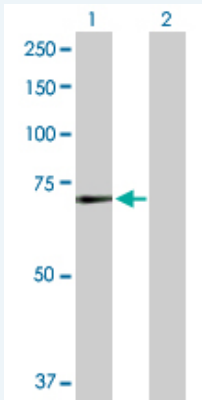
Western Blot (Cell lysate)



MEN1 MaxPab rabbit polyclonal antibody. Western Blot analysis of MEN1 expression in HeLa.

[Protocol Download](#)

### Western Blot (Transfected lysate)



Western Blot analysis of MEN1 expression in transfected 293T cell line ([H00004221-T02](#)) by MEN1 MaxPab polyclonal antibody.

Lane 1: MEN1 transfected lysate(63.70 KDa).

Lane 2: Non-transfected lysate.

 [Protocol Download](#)

### Gene Information

Entrez GeneID: [4221](#)

GeneBank [BC002544.2](#)

Accession#:

Protein [AAH02544.1](#)

Accession#:

Gene Name: MEN1

Gene Alias: MEAI,SCG2

Gene Description: multiple endocrine neoplasia I

Omim ID: [131100](#), [145000](#)

Gene Ontology: [Hyperlink](#)

**Gene Summary:** This gene encodes menin, a putative tumor suppressor associated with a syndrome known as multiple endocrine neoplasia type 1. In vitro studies have shown menin is localized to the nucleus, possesses two functional nuclear localization signals, and inhibits transcriptional activation by JunD, however, the function of this protein is not known. Two messages have been detected on northern blots but the larger message has not been characterized. Alternative splicing results in multiple transcript variants. [provided by RefSeq]

**Other Designations:** OTTHUMP00000042868,OTTHUMP00000070176,OTTHUMP00000070180,OTTHUMP00000070184,endocrine adenomatosis, multiple,menin

### Related Disease

[Adenocarcinoma](#) [Adenoma](#) [Adrenal Gland Neoplasms](#) [Cardiovascular Diseases](#) [Diabetes Mellitus, Type 2](#) [Disease Susceptibility](#) [Edema](#) [Esophageal Neoplasms](#) [Genetic Predisposition to Disease](#) [Hyperinsulinism](#) [Hyperparathyroidism](#) [Hyperparathyroidism, Primary](#) [Hypoglycemia](#) [Insulinoma](#) [Multiple endocrine neoplasia](#) [Multiple Endocrine Neoplasia Type 1](#) [Neuroendocrine Tumors](#) [Pancreatic cancer](#) [Pancreatic Neoplasms](#)

... see more

