



# SZABO SCANDIC

Part of Europa Biosite

## Produktinformation



Forschungsprodukte & Biochemikalien



Zellkultur & Verbrauchsmaterial



Diagnostik & molekulare Diagnostik



Laborgeräte & Service

Weitere Information auf den folgenden Seiten!  
See the following pages for more information!



### Lieferung & Zahlungsart

siehe unsere [Liefer- und Versandbedingungen](#)

### Zuschläge

- Mindermengenzuschlag
- Trockeneiszuschlag
- Gefahrgutzuschlag
- Expressversand

### SZABO-SCANDIC HandelsgmbH

Quellenstraße 110, A-1100 Wien

T. +43(0)1 489 3961-0

F. +43(0)1 489 3961-7

[mail@szabo-scandic.com](mailto:mail@szabo-scandic.com)

[www.szabo-scandic.com](http://www.szabo-scandic.com)

[linkedin.com/company/szaboscandic](https://www.linkedin.com/company/szaboscandic) 

## MEOX2 monoclonal antibody (M08), clone 5E1

Catalog # : H00004223-M08

規格 : [ 100 ug ]

[List All](#)

### Specification

**Product Description:** Mouse monoclonal antibody raised against a full length recombinant MEOX2.

**Immunogen:** MEOX2 (AAH17021, 1 a.a. ~ 303 a.a) full-length recombinant protein with GST tag. MW of the GST tag alone is 26 KDa.

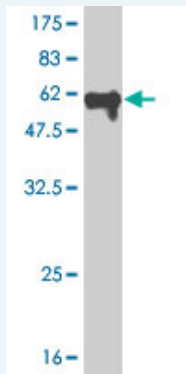
**Sequence:**  
 MEHPLFGCLRSPHATAQGLHPFSQSSLALHGRSDHMSYPELSTSSSSCII  
 AGYPNEEGMFASQHHRGHHHHHHHHHHHHHHHHHHHHQQQHQALQTNWHLQPMS  
 SPPSAARHSLCLQPDSGGPPELGSSPPVLCSSSSLGSSSTPTGAACAP  
 GDYGRQALSPAEEAKRSGGKRKSDSSDSQEGNYKSEVNSKPRKERTAF  
 TKEQIRELEAEFAHHNYLTRRRYEIAVNLDLTERQVKVWFQNRMRMKWK  
 RVKGGQQGAAAREKELVNVKKGTLTPSELGIGAATLQQTGDSIANEDS  
 HDSDHSSEHAHL

**Host:** Mouse

**Reactivity:** Human, Mouse, Rat

**Isotype:** IgG1 Kappa

**Quality Control Testing:** Antibody Reactive Against Recombinant Protein.



Western Blot detection against Immunogen (59.07 KDa) .

**Storage Buffer:** In 1x PBS, pH 7.4

**Storage Instruction:** Store at -20°C or lower. Aliquot to avoid repeated freezing and thawing.

**MSDS:** [Download](#)

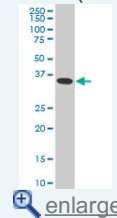
**Datasheet:** [Download](#)

### Applications

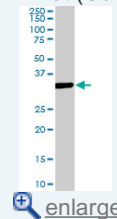
**Western Blot (Cell lysate)**

### Application Image

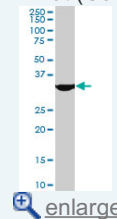
Western Blot (Cell lysate)



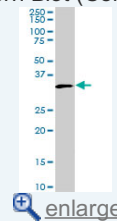
Western Blot (Cell lysate)



Western Blot (Cell lysate)

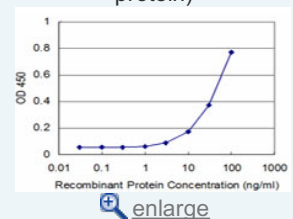


Western Blot (Cell lysate)

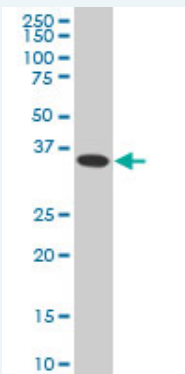


Western Blot (Recombinant protein)


Sandwich ELISA (Recombinant protein)



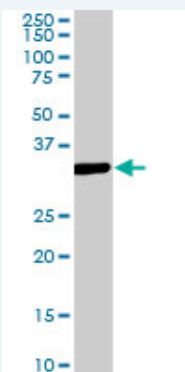
ELISA



MEOX2 monoclonal antibody (M08), clone 5E1 Western Blot analysis of MEOX2 expression in HeLa ( Cat # L013V1 ).

 [Protocol Download](#)

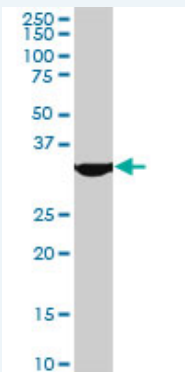
#### Western Blot (Cell lysate)



MEOX2 monoclonal antibody (M08), clone 5E1. Western Blot analysis of MEOX2 expression in PC-12 ( Cat # L012V1 ).

 [Protocol Download](#)

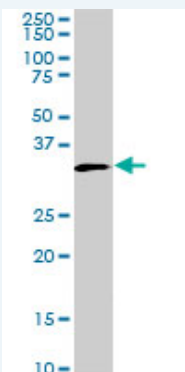
#### Western Blot (Cell lysate)




MEOX2 monoclonal antibody (M08), clone 5E1. Western Blot analysis of MEOX2 expression in Raw 264.7 ( Cat # L024V1 ).

 [Protocol Download](#)

#### Western Blot (Cell lysate)



MEOX2 monoclonal antibody (M08), clone 5E1. Western Blot analysis of MEOX2 expression in NIH/3T3 ( Cat # L018V1 ).

 [Protocol Download](#)

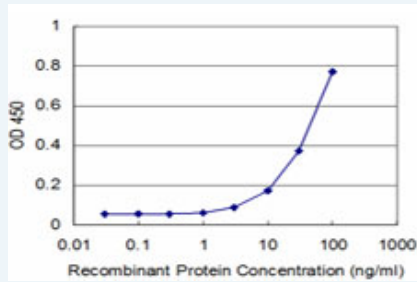
---

### Western Blot (Recombinant protein)

 [Protocol Download](#)

---

### Sandwich ELISA (Recombinant protein)



Detection limit for recombinant GST tagged MEOX2 is approximately 3ng/ml as a capture antibody.

 [Protocol Download](#)

---

### ELISA

---

#### Gene Information

Entrez GeneID: [4223](#)

GeneBank [BC017021](#)  
Accession#:

Protein [AAH17021](#)  
Accession#:

Gene Name: MEOX2

Gene Alias: GAX,MOX2

Gene Description: mesenchyme homeobox 2

Omim ID: [600535](#)

Gene Ontology: [Hyperlink](#)

**Gene Summary:** This gene encodes a member of a subfamily of non-clustered, diverged, antennapedia-like homeobox-containing genes. The encoded protein may play a role in the regulation of vertebrate limb myogenesis. Mutations in the related mouse protein may be associated with craniofacial and/or skeletal abnormalities, in addition to neurovascular dysfunction observed in Alzheimer's disease. [provided by RefSeq]

**Other Designations:** growth arrest-specific homeo box,mesenchyme homeo box 2 (growth arrest-specific homeo box)

---

#### Related Disease

[Tobacco Use Disorder](#)