



SZABO SCANDIC

Part of Europa Biosite

Produktinformation



Forschungsprodukte & Biochemikalien



Zellkultur & Verbrauchsmaterial



Diagnostik & molekulare Diagnostik



Laborgeräte & Service

Weitere Information auf den folgenden Seiten!
See the following pages for more information!



Lieferung & Zahlungsart

siehe unsere [Liefer- und Versandbedingungen](#)

Zuschläge

- Mindermengenzuschlag
- Trockeneiszuschlag
- Gefahrgutzuschlag
- Expressversand

SZABO-SCANDIC HandelsgmbH

Quellenstraße 110, A-1100 Wien

T. +43(0)1 489 3961-0

F. +43(0)1 489 3961-7

mail@szabo-scandic.com

www.szabo-scandic.com

[linkedin.com/company/szaboscandic](https://www.linkedin.com/company/szaboscandic) 



KITLG MaxPab mouse polyclonal antibody (B01) MaxPab®

Catalog # : H00004254-B01

規格 : [50 uL]

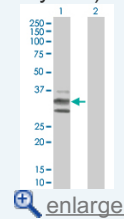
[List All](#)


Specification

Product Description:	Mouse polyclonal antibody raised against a full-length human KITLG protein.
Immunogen:	KITLG (NP_003985, 1 a.a. ~ 245 a.a) full-length human protein.
Sequence:	MKKTQTWILTCIYLQLLLFPNPLVKTEGICRNRVTNNVKDVTKLVANLPKDY MITLKYVPGMDVLP SHCWISEM VQLSDSLDLLDKFSNISEGLSNYSIIDK LVNIVDDLVECVKENS SKDLKKSFKSPEPRLFTPEEFFRIFNRSIDAFKDF VVASETSDCVVSTLSPEK GKAKNPPGDSSLHWAAMALPALFSLIGFAF GALYWKKRQPSLTRA VENIQINEEDNEISMLQEKEREFQEV
Host:	Mouse
Reactivity:	Human
Quality Control Testing:	Antibody reactive against mammalian transfected lysate.
Storage Buffer:	No additive
Storage Instruction:	Store at -20°C or lower. Aliquot to avoid repeated freezing and thawing.
Note:	For IHC and IF applications, antibody purification with Protein A will be needed prior to use.
MSDS:	 Download
Datasheet:	 Download

Application Image

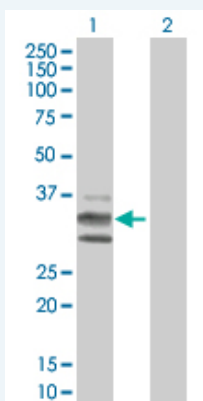
Western Blot (Transfected lysate)



 [enlarge](#)

Applications


Western Blot (Transfected lysate)



Western Blot analysis of KITLG expression in transfected 293T cell line (H00004254-T01) by KITLG MaxPab polyclonal antibody.

Lane 1: KITLG transfected lysate(26.95 KDa).

Lane 2: Non-transfected lysate.

 [Protocol Download](#)

Gene Information

Entrez GeneID: [4254](#)

GeneBank Accession#: [NM_003994](#)

Protein Accession#: [NP_003985](#)

Gene Name: KITLG

Gene Alias: [DKFZp686F2250](#), [KL-1](#), [Kitl](#), [MGF](#), [SCF](#), [SF](#), [SHEP7](#)

Gene Description: KIT ligand

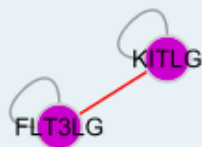
Omim ID: [184745](#)

Gene Ontology: [Hyperlink](#)

Gene Summary: This gene encodes the ligand of the tyrosine-kinase receptor encoded by the KIT locus. This ligand is a pleiotropic factor that acts in utero in germ cell and neural cell development, and hematopoiesis, all believed to reflect a role in cell migration. In adults, it functions pleiotropically, while mostly noted for its continued requirement in hematopoiesis. Two transcript variants encoding different isoforms have been found for this gene. [provided by RefSeq]

Other Designations: mast cell growth factor, steel factor, stem cell factor

Interactome



Gene Pathway

[Cytokine-cytokine receptor interaction](#) [Hematopoietic cell lineage](#) [Melanogenesis](#)
[Pathways in cancer](#)

Related Disease

[Asthma](#) [Asthma](#) [Breast cancer](#) [Breast Neoplasms](#) [Cardiovascular Diseases](#)
[Diabetes Mellitus, Type 2](#) [Edema](#) [Genetic Predisposition to Disease](#) [Infertility, Male](#)
[Neoplasms, Germ Cell and Embryonal](#) [Testicular Neoplasms](#) [Vitiligo](#)

[服務條款](#) | [隱私權政策](#) | [著作及商標](#) | [網站地圖](#)

©2016 亞諾法生技股份有限公司 Abnova Corporation. 版權所有.