



# SZABO SCANDIC

Part of Europa Biosite

## Produktinformation



Forschungsprodukte & Biochemikalien



Zellkultur & Verbrauchsmaterial



Diagnostik & molekulare Diagnostik



Laborgeräte & Service

Weitere Information auf den folgenden Seiten!  
See the following pages for more information!



### Lieferung & Zahlungsart

siehe unsere [Liefer- und Versandbedingungen](#)

### Zuschläge

- Mindermengenzuschlag
- Trockeneiszuschlag
- Gefahrgutzuschlag
- Expressversand

### SZABO-SCANDIC HandelsgmbH

Quellenstraße 110, A-1100 Wien

T. +43(0)1 489 3961-0

F. +43(0)1 489 3961-7

[mail@szabo-scandic.com](mailto:mail@szabo-scandic.com)

[www.szabo-scandic.com](http://www.szabo-scandic.com)

[linkedin.com/company/szaboscandic](https://www.linkedin.com/company/szaboscandic) 

## KITLG monoclonal antibody (M01), clone 3E10

Catalog # : H00004254-M01

規格 : [ 100 ug ]

[List All](#)

### Specification

<b>Product Description:</b>	Mouse monoclonal antibody raised against a partial recombinant KITLG.
<b>Immunogen:</b>	KITLG (NP_000890, 26 a.a. ~ 135 a.a) partial recombinant protein with GST tag. MW of the GST tag alone is 26 KDa.
<b>Sequence:</b>	EGICRNRVTNNVKDVTKLVANLPKDYMITLKYVPGMDVLP SHCWISEMVV QLSDSLTDLLDKFSNISEGLSNYSIIDKLVNIVDDLVECVKENS SKDLKKSF KSPEPLRF
<b>Host:</b>	Mouse
<b>Reactivity:</b>	Human
<b>Isotype:</b>	IgG1 Kappa
<b>Quality Control Testing:</b>	Antibody Reactive Against Recombinant Protein.
<b>Storage Buffer:</b>	In 1x PBS, pH 7.4

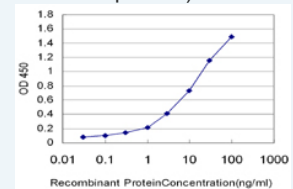
**Storage Instruction:** Store at -20°C or lower. Aliquot to avoid repeated freezing and thawing.


**MSDS:**  [Download](#)

**Datasheet:**  [Download](#)

### Application Image

Sandwich ELISA (Recombinant protein)

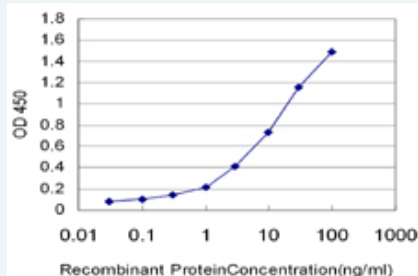


 [enlarge](#)


ELISA

### Applications

Sandwich ELISA (Recombinant protein)



Detection limit for recombinant GST tagged KITLG is approximately 0.1ng/ml as a capture antibody.

 [Protocol Download](#)

ELISA

### Gene Information

Entrez GeneID: [4254](#)

GeneBank [NM\\_000899](#)

**Accession#:**

**Protein** [NP\\_000890](#)

**Accession#:**

**Gene Name:** KITLG

**Gene Alias:** DKFZp686F2250,KL-1,Kitl,MGF,SCF,SF,SHEP7

**Gene** KIT ligand

**Description:**

**Omim ID:** [184745](#)

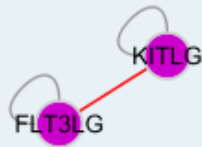
**Gene Ontology:** [Hyperlink](#)

**Gene Summary:** This gene encodes the ligand of the tyrosine-kinase receptor encoded by the KIT locus. This ligand is a pleiotropic factor that acts in utero in germ cell and neural cell development, and hematopoiesis, all believed to reflect a role in cell migration. In adults, it functions pleiotropically, while mostly noted for its continued requirement in hematopoiesis. Two transcript variants encoding different isoforms have been found for this gene. [provided by RefSeq]

**Other** mast cell growth factor,steel factor,stem cell factor

**Designations:**

**Interactome**



**Gene Pathway**

[Cytokine-cytokine receptor interaction](#) [Hematopoietic cell lineage](#) [Melanogenesis](#)  
[Pathways in cancer](#)

**Related Disease**

[Asthma](#) [Asthma](#) [Breast cancer](#) [Breast Neoplasms](#) [Cardiovascular Diseases](#)  
[Diabetes Mellitus, Type 2](#) [Edema](#) [Genetic Predisposition to Disease](#) [Infertility, Male](#)  
[Neoplasms, Germ Cell and Embryonal](#) [Testicular Neoplasms](#) [Vitiligo](#)

