



# SZABO SCANDIC

Part of Europa Biosite

## Produktinformation



Forschungsprodukte & Biochemikalien



Zellkultur & Verbrauchsmaterial



Diagnostik & molekulare Diagnostik



Laborgeräte & Service

Weitere Information auf den folgenden Seiten!  
See the following pages for more information!



### Lieferung & Zahlungsart

siehe unsere [Liefer- und Versandbedingungen](#)

### Zuschläge

- Mindermengenzuschlag
- Trockeneiszuschlag
- Gefahrgutzuschlag
- Expressversand

### SZABO-SCANDIC HandelsgmbH

Quellenstraße 110, A-1100 Wien

T. +43(0)1 489 3961-0

F. +43(0)1 489 3961-7

[mail@szabo-scandic.com](mailto:mail@szabo-scandic.com)

[www.szabo-scandic.com](http://www.szabo-scandic.com)

[linkedin.com/company/szaboscandic](https://www.linkedin.com/company/szaboscandic) 

## KITLG monoclonal antibody (M02), clone 3C7

Catalog # : H00004254-M02

規格 : [ 100 ug ]

List All

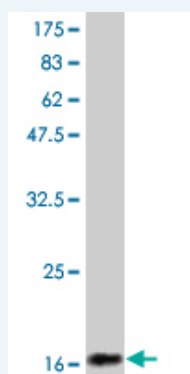
### Specification

<b>Product Description:</b>	Mouse monoclonal antibody raised against a partial recombinant KITLG.
<b>Immunogen:</b>	KITLG (NP_003985, 26 a.a. ~ 245 a.a) partial recombinant protein with GST tag. MW of the GST tag alone is 26 KDa.
<b>Sequence:</b>	EGICRNRVTNNVKDVTKLVANLPKDYMITLKYPGMDVLP SHCWISEMVV QLSDSLTDLLDKFSNISEGLSNYSIIDKLVNIMDDLVECVKENS SKDLKKSF KSPEPRLFTPEEFFRIFNRSIDAFKDFVVASETSDCVVSSTLSPEK GKAKN PPGDSSLHWAAMALPALFSLIIGFAFGALYWKKRQPSLTRA VENIQINEED NEISMLQEKEREFQEV
<b>Host:</b>	Mouse
<b>Reactivity:</b>	Human
<b>Isotype:</b>	IgG2a Kappa

### Application Image

ELISA

**Quality Control Testing:** Antibody Reactive Against Recombinant Protein.



Western Blot detection against Immunogen (24.88 KDa) .

**Storage Buffer:** In 1x PBS, pH 7.4

**Storage Instruction:** Store at -20°C or lower. Aliquot to avoid repeated freezing and thawing.

**MSDS:**  [Download](#)

**Datasheet:**  [Download](#)

### Applications

ELISA

### Gene Information

**Entrez GeneID:** [4254](#)

**GeneBank** [NM\\_003994](#)

**Accession#:**

**Protein** [NP\\_003985](#)

**Accession#:**

**Gene Name:** KITLG

**Gene Alias:** DKFZp686F2250,KL-1,Kitl,MGF,SCF,SF,SHEP7

**Gene** KIT ligand

**Description:**

**Omim ID:** [184745](#)

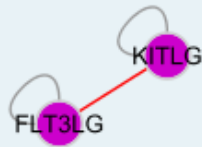
**Gene Ontology:** [Hyperlink](#)

**Gene Summary:** This gene encodes the ligand of the tyrosine-kinase receptor encoded by the KIT locus. This ligand is a pleiotropic factor that acts in utero in germ cell and neural cell development, and hematopoiesis, all believed to reflect a role in cell migration. In adults, it functions pleiotropically, while mostly noted for its continued requirement in hematopoiesis. Two transcript variants encoding different isoforms have been found for this gene. [provided by RefSeq]

**Other** mast cell growth factor,steel factor,stem cell factor

**Designations:**

**Interactome**



**Gene Pathway**

[Cytokine-cytokine receptor interaction](#) [Hematopoietic cell lineage](#) [Melanogenesis](#)  
[Pathways in cancer](#)

**Related Disease**

[Asthma](#) [Asthma](#) [Breast cancer](#) [Breast Neoplasms](#) [Cardiovascular Diseases](#)  
[Diabetes Mellitus, Type 2](#) [Edema](#) [Genetic Predisposition to Disease](#) [Infertility, Male](#)  
[Neoplasms, Germ Cell and Embryonal](#) [Testicular Neoplasms](#) [Vitiligo](#)

