



# SZABO SCANDIC

Part of Europa Biosite

## Produktinformation



Forschungsprodukte & Biochemikalien



Zellkultur & Verbrauchsmaterial



Diagnostik & molekulare Diagnostik



Laborgeräte & Service

Weitere Information auf den folgenden Seiten!  
See the following pages for more information!



### Lieferung & Zahlungsart

siehe unsere [Liefer- und Versandbedingungen](#)

### Zuschläge

- Mindermengenzuschlag
- Trockeneiszuschlag
- Gefahrgutzuschlag
- Expressversand

### SZABO-SCANDIC HandelsgmbH

Quellenstraße 110, A-1100 Wien

T. +43(0)1 489 3961-0

F. +43(0)1 489 3961-7

[mail@szabo-scandic.com](mailto:mail@szabo-scandic.com)

[www.szabo-scandic.com](http://www.szabo-scandic.com)

[linkedin.com/company/szaboscandic](https://www.linkedin.com/company/szaboscandic) 

## KITLG monoclonal antibody (M08), clone 2C7

Catalog # : H00004254-M08

規格 : [ 100 ug ]

List All

### Specification

**Product Description:** Mouse monoclonal antibody raised against a partial recombinant KITLG.

**Immunogen:** KITLG (NP\_003985, 26 a.a. ~ 245 a.a) partial recombinant protein with GST tag. MW of the GST tag alone is 26 KDa.

**Sequence:**  
 EGICRNRVTNNVKDVTKLVANLPKDYMITLKYPGMDVLP SHCWISEMVV  
 QLSDSLTDLLDKFSNISEGLSNYSIIDKLVNIMDDLVECVKENS SKDLKKSF  
 KSPEPRLFTPEEFFRIFNRSIDAFKDFVVASETSDCVVSSTLSPEKGKAKN  
 PPGDSSLHWAAMALPALFSLIIGFAFGALYWKQRPSLTRA VENIQINEED  
 NEISMLQEKEREFQEV

**Host:** Mouse

**Reactivity:** Human, Mouse

**Isotype:** IgG2b Kappa

**Quality Control Testing:** Antibody Reactive Against Recombinant Protein.

**Storage Buffer:** In 1x PBS, pH 7.4

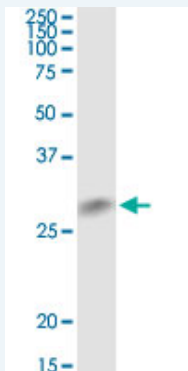
**Storage Instruction:** Store at -20°C or lower. Aliquot to avoid repeated freezing and thawing.

**MSDS:**  [Download](#)

**Datasheet:**  [Download](#)

### Applications

#### Western Blot (Cell lysate)



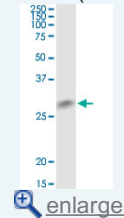
KITLG monoclonal antibody (M08), clone 2C7. Western Blot analysis of KITLG expression in Raw 264.7.

 [Protocol Download](#)

#### ELISA

### Application Image

#### Western Blot (Cell lysate)



ELISA

## Gene Information

---

Entrez GeneID: [4254](#)

GeneBank  
Accession#: [NM\\_003994](#)

Protein  
Accession#: [NP\\_003985](#)

Gene Name: KITLG

Gene Alias: [DKFZp686F2250](#),[KL-1](#),[Kitl](#),[MGF](#),[SCF](#),[SF](#),[SHEP7](#)

Gene  
Description: KIT ligand

Omim ID: [184745](#)

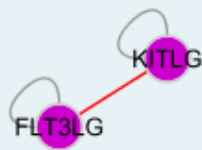
Gene Ontology: [Hyperlink](#)

**Gene Summary:** This gene encodes the ligand of the tyrosine-kinase receptor encoded by the KIT locus. This ligand is a pleiotropic factor that acts in utero in germ cell and neural cell development, and hematopoiesis, all believed to reflect a role in cell migration. In adults, it functions pleiotropically, while mostly noted for its continued requirement in hematopoiesis. Two transcript variants encoding different isoforms have been found for this gene. [provided by RefSeq]

Other  
Designations: mast cell growth factor, steel factor, stem cell factor

## Interactome

---



## Gene Pathway

---

[Cytokine-cytokine receptor interaction](#) [Hematopoietic cell lineage](#) [Melanogenesis](#)  
[Pathways in cancer](#)

## Related Disease

---

[Asthma](#) [Asthma](#) [Breast cancer](#) [Breast Neoplasms](#) [Cardiovascular Diseases](#)  
[Diabetes Mellitus, Type 2](#) [Edema](#) [Genetic Predisposition to Disease](#) [Infertility, Male](#)  
[Neoplasms, Germ Cell and Embryonal](#) [Testicular Neoplasms](#) [Vitiligo](#)

---

---

[服務條款](#) | [隱私權政策](#) | [著作及商標](#) | [網站地圖](#)

©2016 亞諾法生技股份有限公司 Abnova Corporation. 版權所有.