



SZABO SCANDIC

Part of Europa Biosite

Produktinformation



Forschungsprodukte & Biochemikalien



Zellkultur & Verbrauchsmaterial



Diagnostik & molekulare Diagnostik



Laborgeräte & Service

Weitere Information auf den folgenden Seiten!
See the following pages for more information!



Lieferung & Zahlungsart

siehe unsere [Liefer- und Versandbedingungen](#)

Zuschläge

- Mindermengenzuschlag
- Trockeneiszuschlag
- Gefahrgutzuschlag
- Expressversand

SZABO-SCANDIC HandelsgmbH

Quellenstraße 110, A-1100 Wien

T. +43(0)1 489 3961-0

F. +43(0)1 489 3961-7

mail@szabo-scandic.com

www.szabo-scandic.com

[linkedin.com/company/szaboscandic](https://www.linkedin.com/company/szaboscandic) 

KITLG monoclonal antibody (M09), clone 2B1

Catalog # : H00004254-M09

規格 : [100 ug]

List All

Specification

Product Description: Mouse monoclonal antibody raised against a partial recombinant KITLG.

Immunogen: KITLG (NP_003985, 26 a.a. ~ 245 a.a) partial recombinant protein with GST tag. MW of the GST tag alone is 26 KDa.

Sequence: EGICRNRVTNNVKDVTKLVANLPKDYMITLKYPGMDVLP SHCWISEMVV
QLSDSLTDLLDKFSNISEGLSNYSIIDKLVNIMDDLVECVKENS SKDLKKSF
KSPEPRLFTPEEFFRIFNRSIDAFKDFVVASETSDCVVSSTLSPEK GKAKN
PPGDSSLHWAAMALPALFSLIIGFAFGALYWKKRQPSLTRA VENIQINEED
NEISMLQEKEREFQEV

Host: Mouse

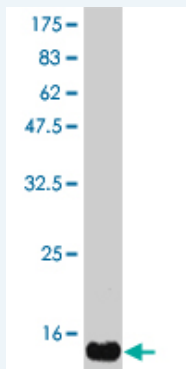
Reactivity: Human

Isotype: IgG1 Kappa

Application Image

ELISA

Quality Control Testing: Antibody Reactive Against Recombinant Protein.



Western Blot detection against Immunogen (24.88 KDa) .

Storage Buffer: In 1x PBS, pH 7.4

Storage Instruction: Store at -20°C or lower. Aliquot to avoid repeated freezing and thawing.

MSDS: [Download](#)

Datasheet: [Download](#)

Applications

ELISA

Gene Information

Entrez GeneID: [4254](#)

GeneBank [NM_003994](#)

Accession#:

Protein [NP_003985](#)

Accession#:

Gene Name: KITLG

Gene Alias: DKFZp686F2250,KL-1,Kitl,MGF,SCF,SF,SHEP7

Gene KIT ligand

Description:

Omim ID: [184745](#)

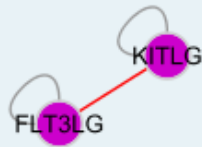
Gene Ontology: [Hyperlink](#)

Gene Summary: This gene encodes the ligand of the tyrosine-kinase receptor encoded by the KIT locus. This ligand is a pleiotropic factor that acts in utero in germ cell and neural cell development, and hematopoiesis, all believed to reflect a role in cell migration. In adults, it functions pleiotropically, while mostly noted for its continued requirement in hematopoiesis. Two transcript variants encoding different isoforms have been found for this gene. [provided by RefSeq]

Other mast cell growth factor,steel factor,stem cell factor

Designations:

Interactome



Gene Pathway

[Cytokine-cytokine receptor interaction](#) [Hematopoietic cell lineage](#) [Melanogenesis](#)
[Pathways in cancer](#)

Related Disease

[Asthma](#) [Asthma](#) [Breast cancer](#) [Breast Neoplasms](#) [Cardiovascular Diseases](#)
[Diabetes Mellitus, Type 2](#) [Edema](#) [Genetic Predisposition to Disease](#) [Infertility, Male](#)
[Neoplasms, Germ Cell and Embryonal](#) [Testicular Neoplasms](#) [Vitiligo](#)

