



SZABO SCANDIC

Part of Europa Biosite

Produktinformation



Forschungsprodukte & Biochemikalien



Zellkultur & Verbrauchsmaterial



Diagnostik & molekulare Diagnostik



Laborgeräte & Service

Weitere Information auf den folgenden Seiten!
See the following pages for more information!



Lieferung & Zahlungsart

siehe unsere [Liefer- und Versandbedingungen](#)

Zuschläge

- Mindermengenzuschlag
- Trockeneiszuschlag
- Gefahrgutzuschlag
- Expressversand

SZABO-SCANDIC HandelsgmbH

Quellenstraße 110, A-1100 Wien

T. +43(0)1 489 3961-0

F. +43(0)1 489 3961-7

mail@szabo-scandic.com

www.szabo-scandic.com

[linkedin.com/company/szaboscandic](https://www.linkedin.com/company/szaboscandic) 

MYH9 monoclonal antibody (M06), clone 4H3

Catalog # : H00004627-M06

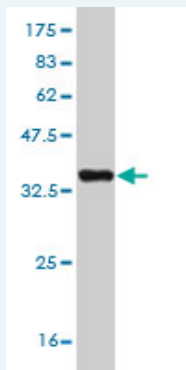
規格 : [100 ug]

[List All](#)

Specification

Product Description:	Mouse monoclonal antibody raised against a partial recombinant MYH9.
Immunogen:	MYH9 (AAH11915, 131 a.a. ~ 220 a.a) partial recombinant protein with GST tag. MW of the GST tag alone is 26 KDa.
Sequence:	RLKQLKRQLEEEAEEEAQRANASRRKLQRELEDATETADAMNREVSSLK NKLRRGDLPFVPRRMARKGAGDGSDEEVDGKADGAEAKPAE
Host:	Mouse
Reactivity:	Human
Isotype:	IgG2b Kappa

Quality Control Testing: Antibody Reactive Against Recombinant Protein.



Western Blot detection against Immunogen (35.64 KDa) .

Storage Buffer: In 1x PBS, pH 7.4

Storage Instruction: Store at -20°C or lower. Aliquot to avoid repeated freezing and thawing.

MSDS: [Download](#)

Datasheet: [Download](#)

Publication Reference

- [EGFR and myosin II inhibitors cooperate to suppress EGFR-T790M-mutant NSCLC cells.](#)
Chiu HC, Chang TY, Huang CT, Chao YS, Hsu JT. Mol Oncol. 2012 Feb 10. [Epub ahead of print]
- [A proteomic study of myosin II motor proteins during tumor cell migration.](#)
Betapudi V, Gokulrangan G, Chance MR, Egelhoff TT. J Mol Biol. 2011 Feb 10. [Epub ahead of print]

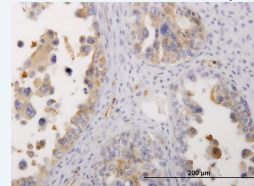
Applications

Western Blot (Recombinant protein)

Application Image

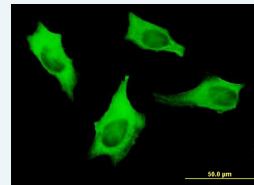
Western Blot (Recombinant protein)

Immunohistochemistry (Formalin/PFA-fixed paraffin-embedded sections)



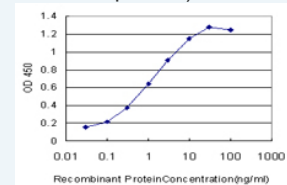
[enlarge](#)

Immunofluorescence



[enlarge](#)

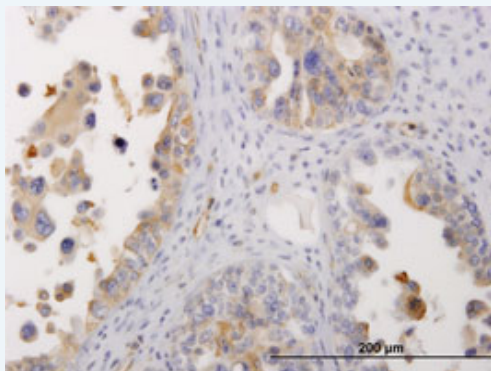
Sandwich ELISA (Recombinant protein)



[enlarge](#)

ELISA

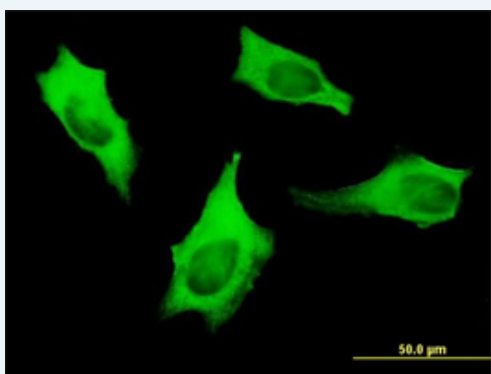
Immunohistochemistry (Formalin/PFA-fixed paraffin-embedded sections)




 enlarge this image

Immunoperoxidase of monoclonal antibody to MYH9 on formalin-fixed paraffin-embedded human ovarian cancer. [antibody concentration 0.7 ug/ml]

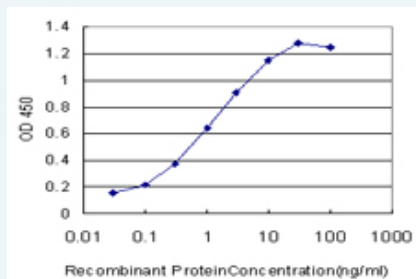
Immunofluorescence



 enlarge this image

Immunofluorescence of monoclonal antibody to MYH9 on HeLa cell . [antibody concentration 10 ug/ml]

Sandwich ELISA (Recombinant protein)



Detection limit for recombinant GST tagged MYH9 is approximately 0.03ng/ml as a capture antibody.

ELISA

Gene Information

Entrez GeneID: [4627](#)

GeneBank [BC011915](#)

Accession#:

Protein [AAH11915](#)

Accession#:

Gene Name: MYH9

Gene Alias: DFNA17,EPSTS,FTNS,MGC104539,MHA,NMHC-II-A,NMMHCA

Gene Description: myosin, heavy chain 9, non-muscle

Omim ID: [153640](#), [153650](#), [155100](#), [160775](#), [600208](#), [603622](#), [605249](#)

Gene Ontology: [Hyperlink](#)

Gene Summary: This gene encodes a myosin IIA heavy chain that contains an IQ domain and a myosin head-like domain. The protein is involved in several important functions, including cytokinesis, cell motility and maintenance of cell shape. Defects in MYH9 are the cause of non-syndromic sensorineural deafness autosomal dominant type 17, Epstein syndrome, Alport syndrome with macrothrombocytopenia, Sebastian syndrome, Fechtner syndrome and macrothrombocytopenia with progressive sensorineural deafness. [provided by RefSeq]

Other Designations: MYH9 variant protein, OTTHUMP00000028706, cellular myosin heavy chain, type A, myosin, heavy polypeptide 9, non-muscle, non-muscle myosin heavy chain, non-muscle myosin heavy polypeptide 9, non-muscle myosin heavy chain II-A

Gene Pathway

[Regulation of actin cytoskeleton](#) [Tight junction](#)

Related Disease

[Albuminuria](#) [Attention Bernard-Soulier Syndrome](#) [Blood Platelet Disorders](#) [Cardiovascular Diseases](#) [Cerebral Hemorrhage](#) [Chronic Disease](#) [Cleft Lip](#) [Cleft Palate](#) [Deafness](#) [Deafness](#) [Diabetes Mellitus](#) [Endocrine System Diseases](#) [Genetic Predisposition to Disease](#) [Glomerulonephritis](#) [Glomerulosclerosis](#) [Focal Segmental Hypertension](#) [Intracranial Hemorrhages](#) [Kidney Diseases](#)

... see more