



# SZABO SCANDIC

Part of Europa Biosite

## Produktinformation



Forschungsprodukte & Biochemikalien



Zellkultur & Verbrauchsmaterial



Diagnostik & molekulare Diagnostik



Laborgeräte & Service

Weitere Information auf den folgenden Seiten!  
See the following pages for more information!



### Lieferung & Zahlungsart

siehe unsere [Liefer- und Versandbedingungen](#)

### Zuschläge

- Mindermengenzuschlag
- Trockeneiszuschlag
- Gefahrgutzuschlag
- Expressversand

### SZABO-SCANDIC HandelsgmbH

Quellenstraße 110, A-1100 Wien

T. +43(0)1 489 3961-0

F. +43(0)1 489 3961-7

[mail@szabo-scandic.com](mailto:mail@szabo-scandic.com)

[www.szabo-scandic.com](http://www.szabo-scandic.com)

[linkedin.com/company/szaboscandic](https://www.linkedin.com/company/szaboscandic) 

## MYL1 polyclonal antibody (A01)

Catalog # : H00004632-A01

規格 : [ 50 uL ]

List All

### Specification

**Product Description:** Mouse polyclonal antibody raised against a partial recombinant MYL1.

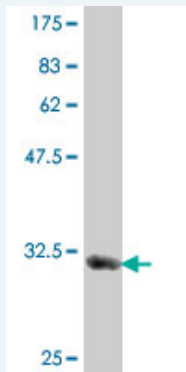
**Immunogen:** MYL1 (NP\_524146, 1 a.a. ~ 80 a.a) partial recombinant protein with GST tag.

**Sequence:** MSFSADQIAEFKEAFLLFDRTGDSKITLSQVGDVLRALGTNPTNAEVRKV  
LGNPSNEELNAKKIEFEQFLPMMQAISNNK

**Host:** Mouse

**Reactivity:** Human

**Quality Control Testing:** Antibody Reactive Against Recombinant Protein.



Western Blot detection against Immunogen (34.91 KDa) .

**Storage Buffer:** 50 % glycerol

**Storage Instruction:** Store at -20°C or lower. Aliquot to avoid repeated freezing and thawing.

**MSDS:** [Download](#)

**Datasheet:** [Download](#)

### Publication Reference

- [Inverse relationships between biomarkers and beef tenderness according to contractile and metabolic properties of the muscle.](#)  
Picard B, Gagaoua M, Micol D, Cassar-Malek I, Hocquette JF, Terlouw CEJ Agric Food Chem. 2014 Sep 1.
- [Functional analysis of beef tenderness.](#)  
Guillemin N, Bonnet M, Jurie C, Picard B.J Proteomics. 2011 Aug 9. [Epub ahead of print]

### Applications

**Western Blot (Recombinant protein)**

[Protocol Download](#)

### Application Image

Western Blot (Recombinant protein)

ELISA

## ELISA

### Gene Information

**Entrez GeneID:** [4632](#)

**GeneBank  
Accession#:** [NM\\_079422](#)

**Protein  
Accession#:** [NP\\_524146](#)

**Gene Name:** MYL1

**Gene Alias:** MLC1F,MLC3F

**Gene  
Description:** myosin, light chain 1, alkali; skeletal, fast

**Omim ID:** [160780](#)

**Gene Ontology:** [Hyperlink](#)

**Gene Summary:** Myosin is a hexameric ATPase cellular motor protein. It is composed of two heavy chains, two nonphosphorylatable alkali light chains, and two phosphorylatable regulatory light chains. This gene encodes a myosin alkali light chain expressed in fast skeletal muscle. Two transcript variants have been identified for this gene. [provided by RefSeq]

**Other  
Designations:** A1 catalytic,A2 catalytic,OTTHUMP00000163942,fast skeletal myosin alkali light chain 1,myosin, light polypeptide 1, alkali; skeletal, fast

[服務條款](#) | [隱私權政策](#) | [著作及商標](#) | [網站地圖](#)

©2016 亞諾法生技股份有限公司 Abnova Corporation. 版權所有.