



SZABO SCANDIC

Part of Europa Biosite

Produktinformation



Forschungsprodukte & Biochemikalien



Zellkultur & Verbrauchsmaterial



Diagnostik & molekulare Diagnostik



Laborgeräte & Service

Weitere Information auf den folgenden Seiten!
See the following pages for more information!



Lieferung & Zahlungsart

siehe unsere [Liefer- und Versandbedingungen](#)

Zuschläge

- Mindermengenzuschlag
- Trockeneiszuschlag
- Gefahrgutzuschlag
- Expressversand

SZABO-SCANDIC HandelsgmbH

Quellenstraße 110, A-1100 Wien

T. +43(0)1 489 3961-0

F. +43(0)1 489 3961-7

mail@szabo-scandic.com

www.szabo-scandic.com

[linkedin.com/company/szaboscandic](https://www.linkedin.com/company/szaboscandic) 

MYL3 293T Cell Transient Overexpression Lysate(Denatured)

Catalog # : H00004634-T02

規格 : [100 uL]

List All

Specification

Transfected Cell Line: 293T

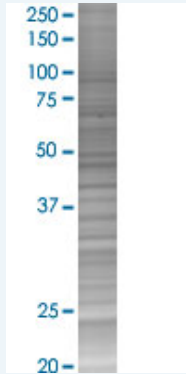
Plasmid: pCMV-MYL3 full-length

Host: Human

Theoretical MW (kDa): 21.9

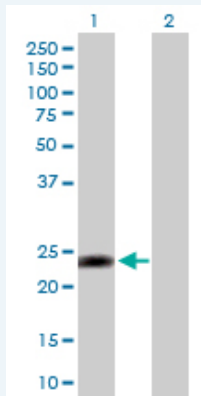
Quality Control Testing: Transient overexpression cell lysate was tested with Anti-MYL3 antibody (H00004634-D01P) by Western Blots.

SDS-PAGE Gel



MYL3 transfected lysate.

Western Blot



Lane 1: MYL3 transfected lysate (21.90 KDa)

Lane 2: Non-transfected lysate.

Storage Buffer: 1X Sample Buffer (50 mM Tris-HCl, 2% SDS, 10% glycerol, 300 mM 2-mercaptoethanol, 0.01% Bromophenol blue)

Storage Instruction: Store at -80°C. Aliquot to avoid repeated freezing and thawing.

MSDS:  [Download](#)

Applications

Application Image

Western Blot

Western Blot

Gene Information

Entrez GeneID: [4634](#)

GeneBank [NM_000258.1](#)
Accession#:

Protein [NP_000249.1](#)
Accession#:

Gene Name: MYL3

Gene Alias: CMH8,MLC1SB,MLC1V,VLC1

Gene Description: myosin, light chain 3, alkali; ventricular, skeletal, slow

Omim ID: [160790](#), [608751](#)

Gene Ontology: [Hyperlink](#)

Gene Summary: MYL3 encodes myosin light chain 3, an alkali light chain also referred to in the literature as both the ventricular isoform and the slow skeletal muscle isoform. Mutations in MYL3 have been identified as a cause of mid-left ventricular chamber type hypertrophic cardiomyopathy. [provided by RefSeq]

Other Designations: OTTHUMP00000165922,myosin, light polypeptide 3, alkali; ventricular, skeletal, slow,slow skeletal ventricular myosin alkali light chain 3

Gene Pathway

[Cardiac muscle contraction](#) [Hypertrophic cardiomyopathy \(HCM\)](#)

Related Disease

[Cardiomegaly](#), [Cardiomyopathy](#), [Dilated Cardiomyopathy](#), [Hypertrophic Cardiomyopathy](#), [Hypertrophic, Familial Cardiovascular Diseases](#), [Diabetes Mellitus, Type 2](#), [Edema](#), [Genetic Predisposition to Disease](#), [Hypertrophy](#), [Left Ventricular Lipid Metabolism](#), [Inborn Errors](#), [Mitochondrial Myopathies](#)

[服務條款](#) | [隱私權政策](#) | [著作及商標](#) | [網站地圖](#)

©2016 亞諾法生技股份有限公司 Abnova Corporation. 版權所有.