



SZABO SCANDIC

Part of Europa Biosite

Produktinformation



Forschungsprodukte & Biochemikalien



Zellkultur & Verbrauchsmaterial



Diagnostik & molekulare Diagnostik



Laborgeräte & Service

Weitere Information auf den folgenden Seiten!
See the following pages for more information!



Lieferung & Zahlungsart

siehe unsere [Liefer- und Versandbedingungen](#)

Zuschläge

- Mindermengenzuschlag
- Trockeneiszuschlag
- Gefahrgutzuschlag
- Expressversand

SZABO-SCANDIC HandelsgmbH

Quellenstraße 110, A-1100 Wien

T. +43(0)1 489 3961-0

F. +43(0)1 489 3961-7

mail@szabo-scandic.com

www.szabo-scandic.com

[linkedin.com/company/szaboscandic](https://www.linkedin.com/company/szaboscandic) 



MYL5 MaxPab mouse polyclonal antibody (B01) MaxPab®

Catalog # : H00004636-B01

規格 : [50 uL]

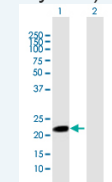
[List All](#)

Specification

Product Description:	Mouse polyclonal antibody raised against a full-length human MYL5 protein.
Immunogen:	MYL5 (NP_002468.1, 1 a.a. ~ 173 a.a) full-length human protein.
Sequence:	MASRKTKKKEGGALRAQRASSNVFSNFEQTQIQEFKEAFTLMDQNRDG FIDKEDLKDTYASLGKTNVKDDELDAMLKEASGPINF TMFLNLFGEKLSG TDAEETILNAFKMLDPDGKKGKINKEYIKRLLMSQADKMTAEEDVQMFQFA SIDVAGNLDYKALSYVITHGEEKEE
Host:	Mouse
Reactivity:	Human
Quality Control Testing:	Antibody reactive against mammalian transfected lysate.
Storage Buffer:	No additive
Storage Instruction:	Store at -20°C or lower. Aliquot to avoid repeated freezing and thawing.
Note:	For IHC and IF applications, antibody purification with Protein A will be needed prior to use.
MSDS:	 Download
Datasheet:	 Download

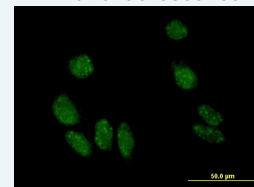
Application Image


Western Blot (Transfected lysate)



 [enlarge](#)

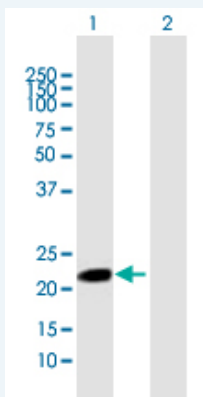
Immunofluorescence



 [enlarge](#)

Applications


Western Blot (Transfected lysate)



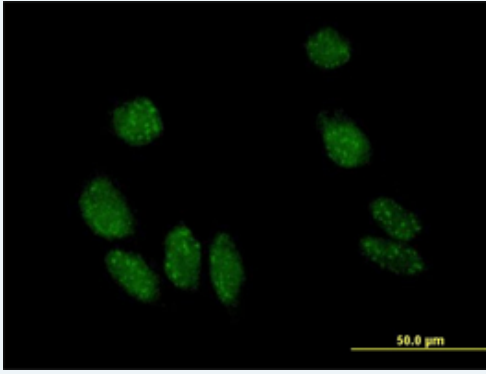
Western Blot analysis of MYL5 expression in transfected 293T cell line (H00004636-T01) by MYL5 MaxPab polyclonal antibody.

Lane1:MYL5 transfected lysate(19.03 KDa).

Lane2:Non-transfected lysate.


 [Protocol Download](#)

Immunofluorescence



[enlarge this image](#)

Immunofluorescence of purified MaxPab antibody to MYL5 on HeLa cell. [antibody concentration 10 ug/ml]

 [Protocol Download](#)

Gene Information

Entrez GeneID: [4636](#)

**GeneBank
Accession#:** [NM_002477.1](#)

**Protein
Accession#:** [NP_002468.1](#)

Gene Name: MYL5

Gene Alias: -

**Gene
Description:** myosin, light chain 5, regulatory

Omim ID: [160782](#)

Gene Ontology: [Hyperlink](#)

Gene Summary: This gene encodes one of the myosin light chains, a component of the hexameric ATPase cellular motor protein myosin. Myosin is composed of two heavy chains, two nonphosphorylatable alkali light chains, and two phosphorylatable regulatory light chains. This gene product, one of the regulatory light chains, is expressed in fetal muscle and in adult retina, cerebellum, and basal ganglia. [provided by RefSeq]

**Other
Designations:** myosin regulatory light chain 5, myosin, light polypeptide 5, regulatory, superfast myosin regulatory light chain 2

Gene Pathway

[Focal adhesion](#) [Leukocyte transendothelial migration](#) [Regulation of actin cytoskeleton](#)
[Tight junction](#)

[服務條款](#) | [隱私權政策](#) | [著作及商標](#) | [網站地圖](#)

©2016 亞諾法生技股份有限公司 Abnova Corporation. 版權所有.