



SZABO SCANDIC

Part of Europa Biosite

Produktinformation



Forschungsprodukte & Biochemikalien



Zellkultur & Verbrauchsmaterial



Diagnostik & molekulare Diagnostik



Laborgeräte & Service

Weitere Information auf den folgenden Seiten!
See the following pages for more information!



Lieferung & Zahlungsart

siehe unsere [Liefer- und Versandbedingungen](#)

Zuschläge

- Mindermengenzuschlag
- Trockeneiszuschlag
- Gefahrgutzuschlag
- Expressversand

SZABO-SCANDIC HandelsgmbH

Quellenstraße 110, A-1100 Wien

T. +43(0)1 489 3961-0

F. +43(0)1 489 3961-7

mail@szabo-scandic.com

www.szabo-scandic.com

[linkedin.com/company/szaboscandic](https://www.linkedin.com/company/szaboscandic) 

MYL6 polyclonal antibody (A01)

Catalog # : H00004637-A01

規格 : [50 uL]

List All

Specification

Product Description: Mouse polyclonal antibody raised against a partial recombinant MYL6.

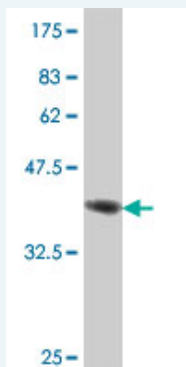
Immunogen: MYL6 (NP_066299, 1 a.a. ~ 100 a.a) partial recombinant protein with GST tag.

Sequence: MCDFTEDQTAEFKEAFQLFDRTGDGKILYSQCGDVMRALGQNPTNAEV
LKVLGNPKSDEMNVKVLDFEHFLPMLQTVAKNKDQGTEDYVEGLRVF
DKEG

Host: Mouse

Reactivity: Human

Quality Control Testing: Antibody Reactive Against Recombinant Protein.



Western Blot detection against Immunogen (37.11 kDa) .

Storage Buffer: 50 % glycerol

Storage Instruction: Store at -20°C or lower. Aliquot to avoid repeated freezing and thawing.

MSDS: [Download](#)

Datasheet: [Download](#)

Publication Reference

1. [Identification and expression analysis of genes associated with bovine blastocyst formation.](#)
Goossens K, Van Soom A, Van Poucke M, Vandaele L, Vandesompele J, Van Zeveren A, Peelman LJ. BMC Dev Biol. 2007 Jun 8;7:64.

Applications

Western Blot (Recombinant protein)

[Protocol Download](#)

ELISA

Application Image

Western Blot (Recombinant protein)

ELISA

Gene Information

Entrez GeneID: [4637](#)

**GeneBank
Accession#:** [NM_021019](#)

**Protein
Accession#:** [NP_066299](#)

Gene Name: MYL6

Gene Alias: ESMLC,LC17-GI,LC17-NM,LC17A,LC17B,MLC1SM,MLC3NM,MLC3SM

**Gene
Description:** myosin, light chain 6, alkali, smooth muscle and non-muscle

Omim ID: [609931](#)

Gene Ontology: [Hyperlink](#)

Gene Summary: Myosin is a hexameric ATPase cellular motor protein. It is composed of two heavy chains, two nonphosphorylatable alkali light chains, and two phosphorylatable regulatory light chains. This gene encodes a myosin alkali light chain that is expressed in smooth muscle and non-muscle tissues. Genomic sequences representing several pseudogenes have been described and two transcript variants encoding different isoforms have been identified for this gene. [provided by RefSeq]

**Other
Designations:** myosin, light polypeptide 6, alkali, smooth muscle and non-muscle, smooth muscle and non-muscle myosin alkali light chain

Gene Pathway

[Vascular smooth muscle contraction](#)

[服務條款](#) | [隱私權政策](#) | [著作及商標](#) | [網站地圖](#)

©2016 亞諾法生技股份有限公司 Abnova Corporation. 版權所有.