



# SZABO SCANDIC

Part of Europa Biosite

## Produktinformation



Forschungsprodukte & Biochemikalien



Zellkultur & Verbrauchsmaterial



Diagnostik & molekulare Diagnostik



Laborgeräte & Service

Weitere Information auf den folgenden Seiten!  
See the following pages for more information!



### Lieferung & Zahlungsart

siehe unsere [Liefer- und Versandbedingungen](#)

### Zuschläge

- Mindermengenzuschlag
- Trockeneiszuschlag
- Gefahrgutzuschlag
- Expressversand

### SZABO-SCANDIC HandelsgmbH

Quellenstraße 110, A-1100 Wien

T. +43(0)1 489 3961-0

F. +43(0)1 489 3961-7

[mail@szabo-scandic.com](mailto:mail@szabo-scandic.com)

[www.szabo-scandic.com](http://www.szabo-scandic.com)

[linkedin.com/company/szaboscandic](https://www.linkedin.com/company/szaboscandic) 

## MYOC (Human) Matched Antibody Pair

Catalog # : H00004653-AP22

規格 : [ 1 Set ]

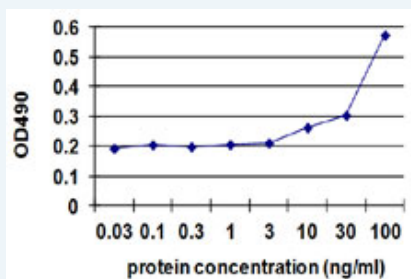
[List All](#)

### Specification

**Product Description:** This antibody pair set comes with matched antibody pair to detect and quantify protein level of human MYOC.

**Reactivity:** Human

**Quality Control Testing:** Standard curve using recombinant protein ( H00004653-P01 ) as an analyte.



Sandwich ELISA detection sensitivity ranging from 10 ng/ml to 100 ng/ml.

**Supplied Product:** Antibody pair set content:  
 1. Capture antibody: rabbit MaxPab® affinity purified polyclonal anti-MYOC (100 ug)  
 2. Detection antibody: mouse purified polyclonal anti-MYOC (20 ug)  
 \*Reagents are sufficient for at least 1-2 x 96 well plates using recommended protocols.

**Storage Instruction:** Store reagents of the antibody pair set at -20°C or lower. Please aliquot to avoid repeated freeze thaw cycle. Reagents should be returned to -20°C storage immediately after use.

### Applications

ELISA Pair (Recombinant protein)

 [Protocol Download](#)

### Gene Information

**Entrez GeneID:** [4653](#)

**Gene Name:** MYOC

**Gene Alias:** GLC1A,GPOA,JOAG,JOAG1,TIGR,myocilin

**Gene Description:** myocilin, trabecular meshwork inducible glucocorticoid response

**Omim ID:** [137750](#), [601652](#)

**Gene Ontology:** [Hyperlink](#)

**Gene Summary:** MYOC encodes the protein myocilin, which is believed to have a role in cytoskeletal function. MYOC is expressed in many ocular tissues,

including the trabecular meshwork, and was revealed to be the trabecular meshwork glucocorticoid-inducible response protein (TIGR). The trabecular meshwork is a specialized eye tissue essential in regulating intraocular pressure, and mutations in MYOC have been identified as the cause of hereditary juvenile-onset open-angle glaucoma. [provided by RefSeq]

---

**Other** OTTHUMP00000032681,mutated trabecular meshwork-induced  
**Designations:** glucocorticoid response protein,myocilin

---

#### **Related Disease**

---

[Exfoliation Syndrome](#) [Genetic Predisposition to Disease](#) [Glaucoma](#) [Glaucoma](#)  
[Glaucoma, Open-Angle](#) [Hypertension](#) [Myopia](#) [Ocular Hypertension](#) [Parkinson disease](#)  
[Retinal Diseases](#)

---

[服務條款](#) | [隱私權政策](#) | [著作及商標](#) | [網站地圖](#)

©2016 亞諾法生技股份有限公司 Abnova Corporation. 版權所有.