



# SZABO SCANDIC

Part of Europa Biosite

## Produktinformation



Forschungsprodukte & Biochemikalien



Zellkultur & Verbrauchsmaterial



Diagnostik & molekulare Diagnostik



Laborgeräte & Service

Weitere Information auf den folgenden Seiten!  
See the following pages for more information!



### Lieferung & Zahlungsart

siehe unsere [Liefer- und Versandbedingungen](#)

### Zuschläge

- Mindermengenzuschlag
- Trockeneiszuschlag
- Gefahrgutzuschlag
- Expressversand

### SZABO-SCANDIC HandelsgmbH

Quellenstraße 110, A-1100 Wien

T. +43(0)1 489 3961-0

F. +43(0)1 489 3961-7

[mail@szabo-scandic.com](mailto:mail@szabo-scandic.com)

[www.szabo-scandic.com](http://www.szabo-scandic.com)

[linkedin.com/company/szaboscandic](https://www.linkedin.com/company/szaboscandic) 

# MYOC MaxPab mouse polyclonal antibody (B01) MaxPab®

Catalog # : H00004653-B01

規格 : [ 50 uL ]

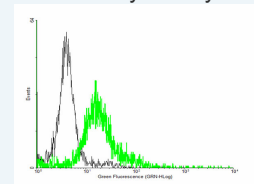
[List All](#)

## Specification

<b>Product Description:</b>	Mouse polyclonal antibody raised against a full-length human MYOC protein.
<b>Immunogen:</b>	MYOC (NP_000252.1, 1 a.a. ~ 504 a.a) full-length human protein.
<b>Sequence:</b>	MRFFCARCCSFGPEMPAVQLLLLACLWVDVGARTAQLRKANDQSGRC QYTF SVASPNESSCPEQSQAMSVIHNLQRDSSTQRLDLEATKARLSSLE SLLHQLTLDQAARPQETQEGLQRELGLRRERDQLETQTRELETAYSN LLRDKSVLEEEKRRLRQENENLARRLESSSQEVARLRRGQCPQTRDTA RAVPPGSREVSTWNLDTLAFQELKSELTEVPASRIKESPSGYLRSGEG DTGCGELVWVGEPLTLRTAETITGKYGVWMRDPKPTYPTQETTWRID TVGTDVRQVFEYDLISQFMQGYPSKVHILPRPLESTGAVVYSGSLYFQG AESRTVIRYELNTEVKAKEKEIPGAGYHGQFPYSWGGYTDIDLAVDEAGL WVIYSTDEAKGAVLSKLNPENLELEQTWETNIRKQSVANAFICGTLTYVS SYTSADATVNFAYDGTG GISKTLTIPFKNRYKYSSMIDYNPLEKKLFAWDN LNMVTYDIKLSKM
<b>Host:</b>	Mouse
<b>Reactivity:</b>	Human
<b>Quality Control Testing:</b>	Antibody reactive against mammalian transfected lysate.
<b>Storage Buffer:</b>	No additive
<b>Storage Instruction:</b>	Store at -20°C or lower. Aliquot to avoid repeated freezing and thawing.
<b>Note:</b>	For IHC and IF applications, antibody purification with Protein A will be needed prior to use.
<b>MSDS:</b>	<a href="#">Download</a>
<b>Datasheet:</b>	<a href="#">Download</a>

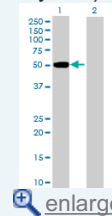
## Application Image

### Flow Cytometry



[enlarge](#)

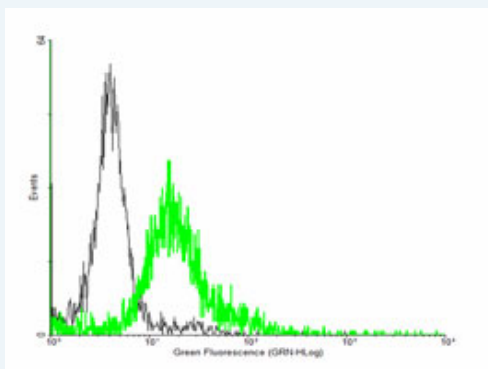
### Western Blot (Transfected lysate)



[enlarge](#)

## Applications

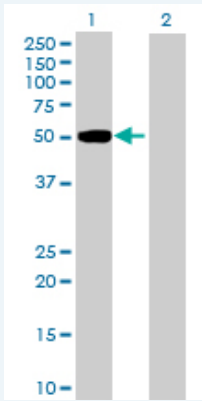
### Flow Cytometry



[enlarge this image](#)

FACS analysis of negative control 293 cells (Black) and MYOC expressing 293 cells (Green) using MYOC purified MaxPab mouse polyclonal antibody.

### Western Blot (Transfected lysate)



Western Blot analysis of MYOC expression in transfected 293T cell line ([H00004653-T01](#)) by MYOC MaxPab polyclonal antibody.

Lane 1: MYOC transfected lysate(55.44 KDa).  
Lane 2: Non-transfected lysate.

 [Protocol Download](#)

### Gene Information

**Entrez GeneID:** [4653](#)

**GeneBank Accession#:** [NM\\_000261.1](#)

**Protein Accession#:** [NP\\_000252.1](#)

**Gene Name:** MYOC

**Gene Alias:** GLC1A,GPOA,JOAG,JOAG1,TIGR,myocilin

**Gene Description:** myocilin, trabecular meshwork inducible glucocorticoid response

**Omim ID:** [137750](#), [601652](#)

**Gene Ontology:** [Hyperlink](#)

**Gene Summary:** MYOC encodes the protein myocilin, which is believed to have a role in cytoskeletal function. MYOC is expressed in many ocular tissues, including the trabecular meshwork, and was revealed to be the trabecular meshwork glucocorticoid-inducible response protein (TIGR). The trabecular meshwork is a specialized eye tissue essential in regulating intraocular pressure, and mutations in MYOC have been identified as the cause of hereditary juvenile-onset open-angle glaucoma. [provided by RefSeq]

**Other Designations:** OTTHUMP00000032681,mutated trabecular meshwork-induced glucocorticoid response protein,myocilin

### Related Disease

[Exfoliation Syndrome](#) [Genetic Predisposition to Disease](#) [Glaucoma](#) [Glaucoma](#) [Glaucoma, Open-Angle](#) [Hypertension](#) [Myopia](#) [Ocular Hypertension](#) [Parkinson disease](#) [Retinal Diseases](#)

