



SZABO SCANDIC

Part of Europa Biosite

Produktinformation



Forschungsprodukte & Biochemikalien



Zellkultur & Verbrauchsmaterial



Diagnostik & molekulare Diagnostik



Laborgeräte & Service

Weitere Information auf den folgenden Seiten!
See the following pages for more information!



Lieferung & Zahlungsart

siehe unsere [Liefer- und Versandbedingungen](#)

Zuschläge

- Mindermengenzuschlag
- Trockeneiszuschlag
- Gefahrgutzuschlag
- Expressversand

SZABO-SCANDIC HandelsgmbH

Quellenstraße 110, A-1100 Wien

T. +43(0)1 489 3961-0

F. +43(0)1 489 3961-7

mail@szabo-scandic.com

www.szabo-scandic.com

[linkedin.com/company/szaboscandic](https://www.linkedin.com/company/szaboscandic) 

MYOC 293T Cell Transient Overexpression Lysate(Denatured)

Catalog # : H00004653-T01

規格 : [100 uL]

List All

Specification

Transfected Cell Line: 293T

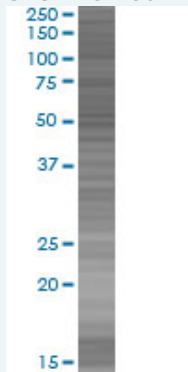
Plasmid: pCMV-MYOC full-length

Host: Human

Theoretical MW (kDa): 57

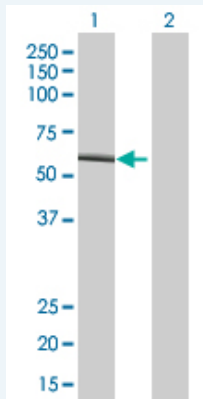
Quality Control Testing: Transient overexpression cell lysate was tested with Anti-MYOC antibody (H00004653-B01) by Western Blots.

SDS-PAGE Gel



MYOC transfected lysate.

Western Blot



Lane 1: MYOC transfected lysate (57 KDa)

Lane 2: Non-transfected lysate.

Storage Buffer: 1X Sample Buffer (50 mM Tris-HCl, 2% SDS, 10% glycerol, 300 mM 2-mercaptoethanol, 0.01% Bromophenol blue)

Storage Instruction: Store at -80°C. Aliquot to avoid repeated freezing and thawing.

MSDS:  [Download](#)

Applications

Western Blot

Gene Information

Entrez GeneID: [4653](#)

GeneBank Accession#: [NM_000261.1](#)

Protein Accession#: =

Gene Name: MYOC

Gene Alias: GLC1A,GPOA,JOAG,JOAG1,TIGR,myocilin

Gene Description: myocilin, trabecular meshwork inducible glucocorticoid response

Omim ID: [137750](#), [601652](#)

Gene Ontology: [Hyperlink](#)

Gene Summary: MYOC encodes the protein myocilin, which is believed to have a role in cytoskeletal function. MYOC is expressed in many ocular tissues, including the trabecular meshwork, and was revealed to be the trabecular meshwork glucocorticoid-inducible response protein (TIGR). The trabecular meshwork is a specialized eye tissue essential in regulating intraocular pressure, and mutations in MYOC have been identified as the cause of hereditary juvenile-onset open-angle glaucoma. [provided by RefSeq]

Other Designations: OTTHUMP00000032681,mutated trabecular meshwork-induced glucocorticoid response protein,myocilin

Related Disease

[Exfoliation Syndrome](#) [Genetic Predisposition to Disease](#) [Glaucoma](#) [Glaucoma](#) [Glaucoma, Open-Angle](#) [Hypertension](#) [Myopia](#) [Ocular Hypertension](#) [Parkinson disease](#) [Retinal Diseases](#)

[服務條款](#) | [隱私權政策](#) | [著作及商標](#) | [網站地圖](#)

©2016 亞諾法生技股份有限公司 Abnova Corporation. 版權所有.