



SZABO SCANDIC

Part of Europa Biosite

Produktinformation



Forschungsprodukte & Biochemikalien



Zellkultur & Verbrauchsmaterial



Diagnostik & molekulare Diagnostik



Laborgeräte & Service

Weitere Information auf den folgenden Seiten!
See the following pages for more information!



Lieferung & Zahlungsart

siehe unsere [Liefer- und Versandbedingungen](#)

Zuschläge

- Mindermengenzuschlag
- Trockeneiszuschlag
- Gefahrgutzuschlag
- Expressversand

SZABO-SCANDIC HandelsgmbH

Quellenstraße 110, A-1100 Wien

T. +43(0)1 489 3961-0

F. +43(0)1 489 3961-7

mail@szabo-scandic.com

www.szabo-scandic.com

[linkedin.com/company/szaboscandic](https://www.linkedin.com/company/szaboscandic) 



PPP1R12B MaxPab mouse polyclonal antibody (B01) MaxPab®

Catalog # : H00004660-B01

規格 : [50 uL]

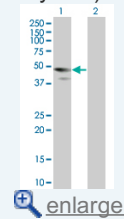
[List All](#)

Specification

| | |
|---------------------------------|---|
| Product Description: | Mouse polyclonal antibody raised against a full-length human PPP1R12B protein. |
| Immunogen: | PPP1R12B (AAH34430, 1 a.a. ~ 386 a.a) full-length human protein. |
| Sequence: | MAELEHLGGKRAESARMRRAEQLRRWRGSLTEQEPAERRGAGRQPLT RRGSPRVRFEDGAVFLAACSSGDTDEVKLLARGADINTVNDGLTALH QACIDENLDMVKFLVENRANVNQQDNEGWTPLHAAASCGYLNIAEYFINH GASVGINSEGEVPSDLAEEPAMKDLLLEQVKKQGVDLEQSRKEEQQ MLQDARQWLNSGKIEDVRQARSGATALHVAAAKGYSEVLRLLIQAGYEL NVQDYDGWTPLHAAAHWGVKEACSLAEALCDMDIRNKLGGTTFDVADE GLVEHLELLQKKQNVLRSEKETRNKLIESDLNSKIQSGFFKNKEKMLYEEE TPKSQEMEEENKESSSSSSEEEEGEDEASESETEKEAVLFWPF |
| Host: | Mouse |
| Reactivity: | Human |
| Quality Control Testing: | Antibody reactive against mammalian transfected lysate. |
| Storage Buffer: | No additive |
| Storage Instruction: | Store at -20°C or lower. Aliquot to avoid repeated freezing and thawing. |
| Note: | For IHC and IF applications, antibody purification with Protein A will be needed prior to use. |
| MSDS: |  Download |
| Datasheet: |  Download |

Application Image

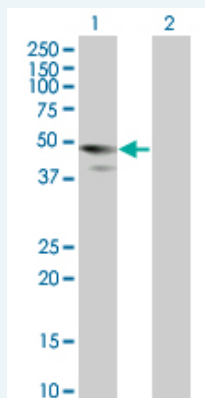
Western Blot (Transfected lysate)



 enlarge

Applications

Western Blot (Transfected lysate)



Western Blot analysis of PPP1R12B expression in transfected 293T cell line ([H00004660-T01](#)) by PPP1R12B MaxPab polyclonal antibody.

Lane 1: PPP1R12B transfected lysate(42.57 KDa).

Gene Information

Entrez GeneID: [4660](#)

**GeneBank
Accession#:** [BC034430](#)

**Protein
Accession#:** [AAH34430](#)

Gene Name: PPP1R12B

Gene Alias: MGC131980,MGC87886,MYPT2

**Gene
Description:** protein phosphatase 1, regulatory (inhibitor) subunit 12B

Omim ID: [603768](#)

Gene Ontology: [Hyperlink](#)

Gene Summary: Myosin light chain phosphatase (MLCP) consists of three subunits- catalytic subunit, large subunit/myosin binding subunit (MBS) and small subunit (sm-M20). This gene is a multi-functional gene which encodes both MBS and sm-M20. MLCP regulates myosins and the dephosphorylation is enhanced by the presence of MBS. The sm-M20 is suggested to play a regulatory role in muscle contraction by binding to MBS. MBS is also encoded by another gene, myosin light chain phosphatase target subunit 1. sm-M20 shows higher binding affinity to this gene product than to myosin light chain phosphatase target subunit 2-MBS even though the two MBS proteins are highly similar. Although both MBSs increase the activity of MLCP, myosin light chain phosphatase target subunit 1-MBS is a more efficient activator. There are four alternatively spliced transcript variants described; two alter the MBS coding region and two alter the sm-M20 coding region of this gene. [provided by RefSeq]

**Other
Designations:** myosin phosphatase regulatory subunit,myosin phosphatase, target subunit 2

Gene Pathway

[Vascular smooth muscle contraction](#)

Related Disease

[Cerebral Hemorrhage Genetic Predisposition to Disease Hypertension](#)
[Intracranial Hemorrhages Stroke Subarachnoid Hemorrhage Tobacco Use Disorder](#)