



SZABO SCANDIC

Part of Europa Biosite

Produktinformation



Forschungsprodukte & Biochemikalien



Zellkultur & Verbrauchsmaterial



Diagnostik & molekulare Diagnostik



Laborgeräte & Service

Weitere Information auf den folgenden Seiten!
See the following pages for more information!



Lieferung & Zahlungsart

siehe unsere [Liefer- und Versandbedingungen](#)

Zuschläge

- Mindermengenzuschlag
- Trockeneiszuschlag
- Gefahrgutzuschlag
- Expressversand

SZABO-SCANDIC HandelsgmbH

Quellenstraße 110, A-1100 Wien

T. +43(0)1 489 3961-0

F. +43(0)1 489 3961-7

mail@szabo-scandic.com

www.szabo-scandic.com

[linkedin.com/company/szaboscandic](https://www.linkedin.com/company/szaboscandic)



PPP1R12B purified MaxPab rabbit polyclonal antibody (D01P) MaxPab®

Catalog # : H00004660-D01P

規格 : [100 ug]

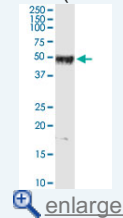
[List All](#)

Specification

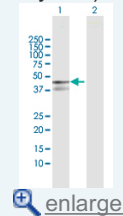
Product Description:	Rabbit polyclonal antibody raised against a full-length human PPP1R12B protein.
Immunogen:	PPP1R12B (ENSP00000349206, 1 a.a. ~ 386 a.a) full-length human protein.
Sequence:	MAELEHLGGKRAESARMRAEQLRRWRGSLTEQEPAERRGAGRQPLT RRGSPRVRFEDGAVFLAACSSGDTDEVKLLARGADINTVNV DGLTALH QACIDENLDMVKFLVENRANV NQQDNEGWTPLHAAAASCGYLNIAEYFINH GASVGIVNSEGEVPSDLAEEPAMKDLLLEQVKKQGVDLEQSRKEEEQQ MLQDARQWLN SGKIEDVRQARSGATALHVA AAKGYSEVLRLLIQAGYEL NVQDYDGWTP LHA AAHWGVKEAC SILAEALCDMDIRNKL GQTPFDVADE GLVEHLELLQKKQNL RSEKETRNKLIESDLNSKIQSGFFKNKEKMLYEEE TPKSQEMEEENKESSSSSSEEEEGEDEASESETEKEAVLFWPF
Host:	Rabbit
Reactivity:	Human
Quality Control Testing:	Antibody reactive against mammalian transfected lysate.
Storage Buffer:	In 1x PBS, pH 7.4
Storage Instruction:	Store at -20°C or lower. Aliquot to avoid repeated freezing and thawing.
MSDS:	 Download
Datasheet:	 Download

Application Image

Western Blot (Tissue lysate)

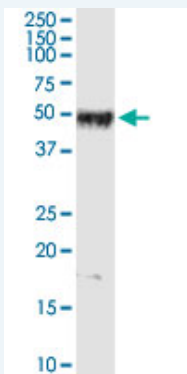


Western Blot (Transfected lysate)




Applications

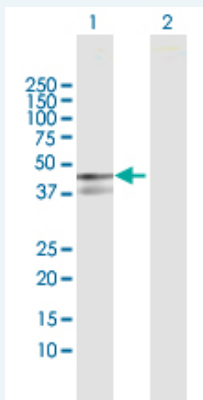
Western Blot (Tissue lysate)



PPP1R12B MaxPab rabbit polyclonal antibody. Western Blot analysis of PPP1R12B expression in human kidney.

 [Protocol Download](#)

Western Blot (Transfected lysate)



Western Blot analysis of PPP1R12B expression in transfected 293T cell line ([H00004660-T03](#)) by PPP1R12B MaxPab polyclonal antibody.

Lane 1: PPP1R12B transfected lysate(43.30 KDa).
Lane 2: Non-transfected lysate.

 [Protocol Download](#)

Gene Information

Entrez GeneID: [4660](#)

GeneBank [ENST00000356764](#)

Accession#:

Protein [ENSP00000349206](#)

Accession#:

Gene Name: PPP1R12B

Gene Alias: MGC131980,MGC87886,MYPT2

Gene protein phosphatase 1, regulatory (inhibitor) subunit 12B

Description:

Omim ID: [603768](#)

Gene Ontology: [Hyperlink](#)

Gene Summary: Myosin light chain phosphatase (MLCP) consists of three subunits- catalytic subunit, large subunit/myosin binding subunit (MBS) and small subunit (sm-M20). This gene is a multi-functional gene which encodes both MBS and sm-M20. MLCP regulates myosins and the dephosphorylation is enhanced by the presence of MBS. The sm-M20 is suggested to play a regulatory role in muscle contraction by binding to MBS. MBS is also encoded by another gene, myosin light chain phosphatase target subunit 1. sm-M20 shows higher binding affinity to this gene product than to myosin light chain phosphatase target subunit 2-MBS even though the two MBS proteins are highly similar. Although both MBSs increase the activity of MLCP, myosin light chain phosphatase target subunit 1-MBS is a more efficient activator. There are four alternatively spliced transcript variants described; two alter the MBS coding region and two alter the sm-M20 coding region of this gene. [provided by RefSeq]

Other Designations: myosin phosphatase regulatory subunit,myosin phosphatase, target subunit 2

Gene Pathway

[Vascular smooth muscle contraction](#)

Related Disease

[Cerebral Hemorrhage](#) [Genetic Predisposition to Disease](#) [Hypertension](#)

[服務條款](#) | [隱私權政策](#) | [著作及商標](#) | [網站地圖](#)

©2016 亞諾法生技股份有限公司 Abnova Corporation. 版權所有.