



# SZABO SCANDIC

Part of Europa Biosite

## Produktinformation



Forschungsprodukte & Biochemikalien



Zellkultur & Verbrauchsmaterial



Diagnostik & molekulare Diagnostik



Laborgeräte & Service

Weitere Information auf den folgenden Seiten!  
See the following pages for more information!



### Lieferung & Zahlungsart

siehe unsere [Liefer- und Versandbedingungen](#)

### Zuschläge

- Mindermengenzuschlag
- Trockeneiszuschlag
- Gefahrgutzuschlag
- Expressversand

### SZABO-SCANDIC HandelsgmbH

Quellenstraße 110, A-1100 Wien

T. +43(0)1 489 3961-0

F. +43(0)1 489 3961-7

[mail@szabo-scandic.com](mailto:mail@szabo-scandic.com)

[www.szabo-scandic.com](http://www.szabo-scandic.com)

[linkedin.com/company/szaboscandic](https://www.linkedin.com/company/szaboscandic) 

## NBN monoclonal antibody (M02), clone 2C7

Catalog # : H00004683-M02

規格 : [ 100 ug ]

[List All](#)

### Specification

**Product Description:** Mouse monoclonal antibody raised against a partial recombinant NBN.

**Immunogen:** NBN (NP\_002476, 645 a.a. ~ 754 a.a) partial recombinant protein with GST tag. MW of the GST tag alone is 26 KDa.

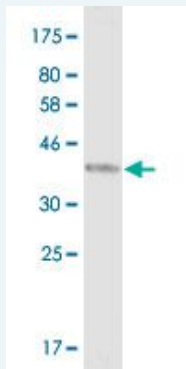
**Sequence:** DDSEMLPKLLLLTEFRSLVIKNSTSRNPSGINDDYGQLKNFKKFKKVTYP  
GAGKLPHIIGGSDLIAHHARKNTELEEWLRQEMEVQNHAKKEESLADDLF  
RYNPYLKRRR

**Host:** Mouse

**Reactivity:** Human

**Isotype:** IgG2a Kappa

**Quality Control Testing:** Antibody Reactive Against Recombinant Protein.



Western Blot detection against Immunogen (37.84 KDa) .

**Storage Buffer:** In 1x PBS, pH 7.4

**Storage Instruction:** Store at -20°C or lower. Aliquot to avoid repeated freezing and thawing.

**MSDS:** [Download](#)

**Datasheet:** [Download](#)

### Applications

**Western Blot (Recombinant protein)**

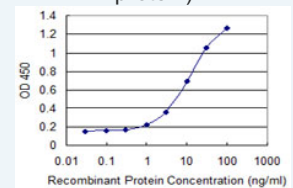
[Protocol Download](#)

**Sandwich ELISA (Recombinant protein)**

### Application Image

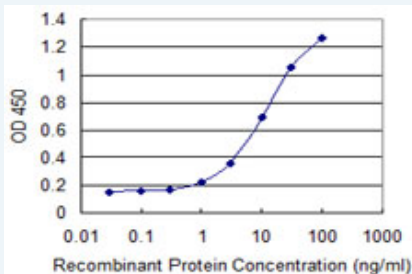
Western Blot (Recombinant protein)

Sandwich ELISA (Recombinant protein)



[enlarge](#)

ELISA



Detection limit for recombinant GST tagged NBN is 0.3 ng/ml as a capture antibody.

 [Protocol Download](#)

## ELISA

### Gene Information

Entrez GeneID: [4683](#)

GeneBank [NM\\_002485](#)

Accession#:

Protein [NP\\_002476](#)

Accession#:

Gene Name: NBN

Gene Alias: AT-V1,AT-V2,ATV,FLJ10155,MGC87362,NBS,NBS1,P95

Gene nibrin

Description:

Omim ID: [251260](#), [602667](#)

Gene Ontology: [Hyperlink](#)

**Gene Summary:** Mutations in this gene are associated with Nijmegen breakage syndrome, an autosomal recessive chromosomal instability syndrome characterized by microcephaly, growth retardation, immunodeficiency, and cancer predisposition. The encoded protein is a member of the MRE11/RAD50 double-strand break repair complex which consists of 5 proteins. This gene product is thought to be involved in DNA double-strand break repair and DNA damage-induced checkpoint activation. [provided by RefSeq]

**Other** Nijmegen breakage syndrome 1 (nibrin),cell cycle regulatory protein

**Designations:** p95,p95 protein of the MRE11/RAD50 complex

### Gene Pathway

[Homologous recombination](#)

### Related Disease

[Acute Disease](#) [Adenocarcinoma](#) [Astrocytoma](#) [Ataxia telangiectasia](#) [Brain Neoplasms](#)  
[Breast cancer](#) [Breast Neoplasms](#) [Carcinoma, Basal Cell](#) [Carcinoma, Ductal](#)  
[Carcinoma, Ductal, Breast](#) [Carcinoma, Non-Small-Cell Lung](#) [Carcinoma, Transitional Cell](#)  
[Central Nervous System Neoplasms](#) [Chromosomal Instability](#) [Chromosome Aberrations](#)  
[Chromosome Breakage](#) [Chromosome Deletion](#) [Cleft Lip](#) [Cleft Palate](#)

... see more

