



SZABO SCANDIC

Part of Europa Biosite

Produktinformation



Forschungsprodukte & Biochemikalien



Zellkultur & Verbrauchsmaterial



Diagnostik & molekulare Diagnostik



Laborgeräte & Service

Weitere Information auf den folgenden Seiten!
See the following pages for more information!



Lieferung & Zahlungsart

siehe unsere [Liefer- und Versandbedingungen](#)

Zuschläge

- Mindermengenzuschlag
- Trockeneiszuschlag
- Gefahrgutzuschlag
- Expressversand

SZABO-SCANDIC HandelsgmbH

Quellenstraße 110, A-1100 Wien

T. +43(0)1 489 3961-0

F. +43(0)1 489 3961-7

mail@szabo-scandic.com

www.szabo-scandic.com

[linkedin.com/company/szaboscandic](https://www.linkedin.com/company/szaboscandic) 



NCL purified MaxPab rabbit polyclonal antibody (D01P) MaxPab®

Catalog # : H00004691-D01P

規格 : [100 ug]

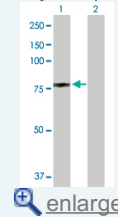
[List All](#)

Specification

Product Description:	Rabbit polyclonal antibody raised against a full-length human NCL protein.
Immunogen:	NCL (NP_005372.2, 1 a.a. ~ 710 a.a) full-length human protein.
Sequence:	MVKLAKAGKNQGDPKMAPPPKEVEEDSEDEEMSEDEEDDSSGEEVVI PQKKGKAAAATSAKKVVVSPSTKKVAVATPAKKAAVTPGKAAAATPAKKT VTPAKAVTTPGKKGATPGKALVATPGKKGAAIPAKGAKNGKNAKKEDSD EEEDDDSEDEEDDEDEDEDEIEPAAMKAAAAAPASEDEDEDEDD EDDDDDSEEDDSEEEAMETTPAKGKKAHVVPVAKNVAEDEDEEEDDE DEDDDDDEDEDEDDDEDEDEEEEEEEEEEPVKEAPGKRKKEMAKQKAAP EAKKQKVEGTEPTTAFNLFVGNLNFNKSAPELKTGISDVFAKNDLAWVDV RIGMTRKFGYVDFESAEDLEKALELTGLKVFGNEIKLEKPKGKDSKKERD ARTLLAKNLPYKVTQDELKEVFEDAAEIRLVSKDGKSKGIAYIEFKTEADA EKTFEKQGTEDGRSISLYYTGEKGQNQDYRGGKNSTWSGESKTLVLS NLSYSATEETLQEVFEKATFIKVPQNGKSKGYAFIEFASFEDAKEALN SCNKREIEGRAIRLELQGPRGSPNARSQPSKTLFVKGLSEDTTTEETLKES FDGSVRARIVTDRETGSSKGFVDFNSEEDAKAAKEAMEDGEIDGNKV TLDWAKPKGEGGFGRGGGRGGFGGRGGGRGGFGGRGGFGGRGG FGRRGGFRGGGGGDHQPQGGKTKFE
Host:	Rabbit
Reactivity:	Human
Quality Control Testing:	Antibody reactive against mammalian transfected lysate.
Storage Buffer:	In 1x PBS, pH 7.4
Storage Instruction:	Store at -20°C or lower. Aliquot to avoid repeated freezing and thawing.
MSDS:	 Download
Datasheet:	 Download

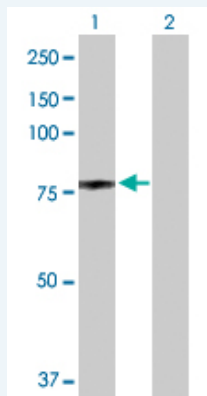
Application Image

Western Blot (Transfected lysate)



Applications

Western Blot (Transfected lysate)



Western Blot analysis of NCL expression in transfected 293T cell line (H00004691-T02) by NCL MaxPab polyclonal antibody.

Lane 1: NCL transfected lysate(76.60 KDa).

Lane 2: Non-transfected lysate.

 [Protocol Download](#)

Gene Information

Entrez GeneID: [4691](#)

GeneBank Accession#: [NM_005381](#)

Protein Accession#: [NP_005372.2](#)

Gene Name: NCL

Gene Alias: C23,FLJ45706

Gene Description: nucleolin

Omim ID: [164035](#)

Gene Ontology: [Hyperlink](#)

Gene Summary: Nucleolin (NCL), a eukaryotic nucleolar phosphoprotein, is involved in the synthesis and maturation of ribosomes. It is located mainly in dense fibrillar regions of the nucleolus. Human NCL gene consists of 14 exons with 13 introns and spans approximately 11kb. The intron 11 of the NCL gene encodes a small nucleolar RNA, termed U20. [provided by RefSeq]

Other Designations: -

Gene Pathway

[Pathogenic Escherichia coli infection - EHEC](#)