



# SZABO SCANDIC

Part of Europa Biosite

## Produktinformation



Forschungsprodukte & Biochemikalien



Zellkultur & Verbrauchsmaterial



Diagnostik & molekulare Diagnostik



Laborgeräte & Service

Weitere Information auf den folgenden Seiten!  
See the following pages for more information!



### Lieferung & Zahlungsart

siehe unsere [Liefer- und Versandbedingungen](#)

### Zuschläge

- Mindermengenzuschlag
- Trockeneiszuschlag
- Gefahrgutzuschlag
- Expressversand

### SZABO-SCANDIC HandelsgmbH

Quellenstraße 110, A-1100 Wien

T. +43(0)1 489 3961-0

F. +43(0)1 489 3961-7

[mail@szabo-scandic.com](mailto:mail@szabo-scandic.com)

[www.szabo-scandic.com](http://www.szabo-scandic.com)

[linkedin.com/company/szaboscandic](https://www.linkedin.com/company/szaboscandic) 

## NCL 293T Cell Transient Overexpression Lysate(Denatured)

Catalog # : H00004691-T01

規格 : [ 100 uL ]

[List All](#)

### Specification

**Transfected Cell Line:** 293T

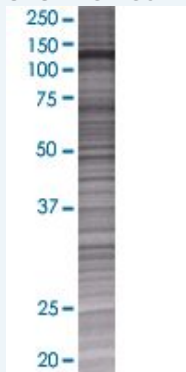
**Plasmid:** pCMV-NCL full-length

**Host:** Human

**Theoretical MW (kDa):** 76.6

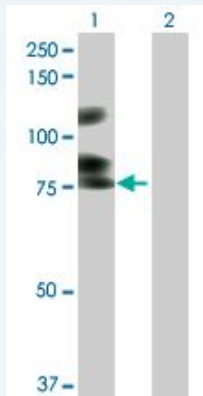
**Quality Control Testing:** Transient overexpression cell lysate was tested with Anti-NCL antibody (H00004691-B01) by Western Blots.

#### SDS-PAGE Gel



NCL transfected lysate.

#### Western Blot



Lane 1: NCL transfected lysate ( 76.6 KDa)

Lane 2: Non-transfected lysate.

**Storage Buffer:** 1X Sample Buffer (50 mM Tris-HCl, 2% SDS, 10% glycerol, 300 mM 2-mercaptoethanol, 0.01% Bromophenol blue)

**Storage Instruction:** Store at -80°C. Aliquot to avoid repeated freezing and thawing.

**MSDS:**  [Download](#)

### Applications

## Western Blot

### Gene Information

Entrez GeneID: [4691](#)

GeneBank Accession#: [NM\\_005381](#)

Protein Accession#: [NP\\_005372.2](#)

Gene Name: NCL

Gene Alias: C23,FLJ45706

Gene Description: nucleolin

Omim ID: [164035](#)

Gene Ontology: [Hyperlink](#)

**Gene Summary:** Nucleolin (NCL), a eukaryotic nucleolar phosphoprotein, is involved in the synthesis and maturation of ribosomes. It is located mainly in dense fibrillar regions of the nucleolus. Human NCL gene consists of 14 exons with 13 introns and spans approximately 11kb. The intron 11 of the NCL gene encodes a small nucleolar RNA, termed U20. [provided by RefSeq]

Other Designations: -

### Gene Pathway

[Pathogenic Escherichia coli infection - EHEC](#)