



# SZABO SCANDIC

Part of Europa Biosite

## Produktinformation



Forschungsprodukte & Biochemikalien



Zellkultur & Verbrauchsmaterial



Diagnostik & molekulare Diagnostik



Laborgeräte & Service

Weitere Information auf den folgenden Seiten!  
See the following pages for more information!



### Lieferung & Zahlungsart

siehe unsere [Liefer- und Versandbedingungen](#)

### Zuschläge

- Mindermengenzuschlag
- Trockeneiszuschlag
- Gefahrgutzuschlag
- Expressversand

### SZABO-SCANDIC HandelsgmbH

Quellenstraße 110, A-1100 Wien

T. +43(0)1 489 3961-0

F. +43(0)1 489 3961-7

[mail@szabo-scandic.com](mailto:mail@szabo-scandic.com)

[www.szabo-scandic.com](http://www.szabo-scandic.com)

[linkedin.com/company/szaboscandic](https://www.linkedin.com/company/szaboscandic) 

## NDUFS6 293T Cell Transient Overexpression Lysate(Denatured)

Catalog # : H00004726-T01

規格 : [ 100 uL ]

[List All](#)

### Specification

**Transfected Cell Line:** 293T

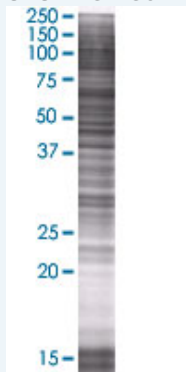
**Plasmid:** pCMV-NDUFS6 full-length

**Host:** Human

**Theoretical MW (kDa):** 13.75

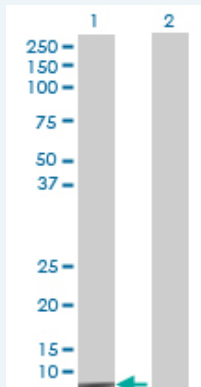
**Quality Control Testing:** Transient overexpression cell lysate was tested with Anti-NDUFS6 antibody ([H00004726-B01](#)) by Western Blots.

#### SDS-PAGE Gel



NDUFS6 transfected lysate.

#### Western Blot



Lane 1: NDUFS6 transfected lysate ( 13.75 KDa)

Lane 2: Non-transfected lysate.

**Storage Buffer:** 1X Sample Buffer (50 mM Tris-HCl, 2% SDS, 10% glycerol, 300 mM 2-mercaptoethanol, 0.01% Bromophenol blue)

**Storage Instruction:** Store at -80°C. Aliquot to avoid repeated freezing and thawing.

**MSDS:**  [Download](#)

### Applications

## Western Blot

### Gene Information

Entrez GeneID: [4726](#)

GeneBank [NM\\_004553.3](#)  
Accession#:

Protein [NP\\_004544.1](#)  
Accession#:

Gene Name: [NDUFS6](#)

Gene Alias: -

Gene Description: NADH dehydrogenase (ubiquinone) Fe-S protein 6, 13kDa (NADH-coenzyme Q reductase)

Omim ID: [252010](#), [603848](#)

Gene Ontology: [Hyperlink](#)

Gene Summary: The multisubunit NADH:ubiquinone oxidoreductase (complex I) is the first enzyme complex in the electron transport chain of mitochondria. The iron-sulfur protein (IP) fraction is made up of 7 subunits, including NDUFS6. See NDUFS1 (MIM 157655).[supplied by OMIM]

Other Designations: -

### Gene Pathway

[Alzheimer's disease](#) [Huntington's disease](#) [Metabolic pathways](#) [Oxidative phosphorylation](#) [Parkinson's disease](#)

### Related Disease

[Alzheimer Disease](#) [Alzheimer disease](#) [Cognition](#) [Genetic Predisposition to Disease](#) [Prostatic Neoplasms](#)