



# SZABO SCANDIC

Part of Europa Biosite

## Produktinformation



Forschungsprodukte & Biochemikalien



Zellkultur & Verbrauchsmaterial



Diagnostik & molekulare Diagnostik



Laborgeräte & Service

Weitere Information auf den folgenden Seiten!  
See the following pages for more information!



### Lieferung & Zahlungsart

siehe unsere [Liefer- und Versandbedingungen](#)

### Zuschläge

- Mindermengenzuschlag
- Trockeneiszuschlag
- Gefahrgutzuschlag
- Expressversand

### SZABO-SCANDIC HandelsgmbH

Quellenstraße 110, A-1100 Wien

T. +43(0)1 489 3961-0

F. +43(0)1 489 3961-7

[mail@szabo-scandic.com](mailto:mail@szabo-scandic.com)

[www.szabo-scandic.com](http://www.szabo-scandic.com)

[linkedin.com/company/szaboscandic](https://www.linkedin.com/company/szaboscandic) 

## SEPT2 monoclonal antibody (M06), clone 2F8

Catalog # : H00004735-M06

規格 : [ 100 ug ]

[List All](#)

### Specification

**Product Description:** Mouse monoclonal antibody raised against a full-length recombinant SEPT2.

**Immunogen:** SEPT2 (AAH33559, 1 a.a. ~ 371 a.a) full-length recombinant protein with GST tag. MW of the GST tag alone is 26 KDa.

**Sequence:** MSKQQPTQFINPETPGYVGFANLPNQVHRKSVKKGFEFTLMVVGESGL  
GKSTLINSFLTDLYPERVIPGAAALNTRKLLWEKIERTVQIEASTVEIEE  
RGVKLRLLTVDTPGYGDAINCRDCKTIIISYIDEQFERYLHDESGLNRRHII  
DNRVHCCFYFISPFHGHLKPLDVAFMKAIHNKVNIVPIAKADTLTKERER  
LKKRILDEIEEHNIKIHLPDAESDEDEDFKEQTRLLKASIPFSVGSNQLIE  
AKGKKVRGRLYPWGVVEVENPEHNDLFLKLRMLITHMQDLQEVTDLH  
YENFRSERLKRGGKVENEDMNKDQILLEKEAELRRMQEMIARMQAQM  
QMGMQGGDGDGGALGHIV

**Host:** Mouse

**Reactivity:** Human

**Isotype:** IgG2a Kappa

**Quality Control Testing:** Antibody Reactive Against Recombinant Protein.

**Storage Buffer:** In 1x PBS, pH 7.4

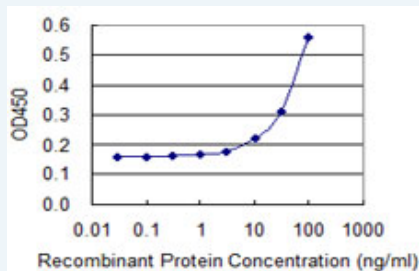
**Storage Instruction:** Store at -20°C or lower. Aliquot to avoid repeated freezing and thawing.

**MSDS:**  [Download](#)

**Datasheet:**  [Download](#)

### Applications

#### Sandwich ELISA (Recombinant protein)



Detection limit for recombinant GST tagged SEPT2 is 3 ng/ml as a capture antibody.

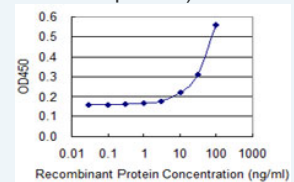
 [Protocol Download](#)

**ELISA**

### Gene Information

### Application Image

Sandwich ELISA (Recombinant protein)



 [enlarge](#)

ELISA

Entrez GeneID: [4735](#)

GeneBank [BC033559](#)  
Accession#:

Protein [AAH33559](#)  
Accession#:

Gene Name: SEPT2

Gene Alias: DIF6,KIAA0158,NEDD5,Pnut13,hNedd5

Gene Description: septin 2

Omim ID: [601506](#)

Gene Ontology: [Hyperlink](#)

Other Designations: OTTHUMP00000164575,neural precursor cell expressed,  
developmentally down-regulated 5

#### Related Disease

[Genetic Predisposition to Disease Lung Neoplasms](#)  
[Pulmonary Disease. Chronic Obstructive Urinary Bladder Neoplasms](#)

[服務條款](#) | [隱私權政策](#) | [著作及商標](#) | [網站地圖](#)

©2016 亞諾法生技股份有限公司 Abnova Corporation. 版權所有.