



SZABO SCANDIC

Part of Europa Biosite

Produktinformation



Forschungsprodukte & Biochemikalien



Zellkultur & Verbrauchsmaterial



Diagnostik & molekulare Diagnostik



Laborgeräte & Service

Weitere Information auf den folgenden Seiten!
See the following pages for more information!



Lieferung & Zahlungsart

siehe unsere [Liefer- und Versandbedingungen](#)

Zuschläge

- Mindermengenzuschlag
- Trockeneiszuschlag
- Gefahrgutzuschlag
- Expressversand

SZABO-SCANDIC HandelsgmbH

Quellenstraße 110, A-1100 Wien

T. +43(0)1 489 3961-0

F. +43(0)1 489 3961-7

mail@szabo-scandic.com

www.szabo-scandic.com

[linkedin.com/company/szaboscandic](https://www.linkedin.com/company/szaboscandic) 

RPL10A purified MaxPab rabbit polyclonal antibody (D01P) MaxPab®

Catalog # : H00004736-D01P

規格 : [100 ug]

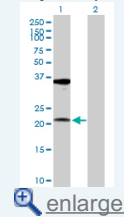
[List All](#)

Specification

Product Description:	Rabbit polyclonal antibody raised against a full-length human RPL10A protein.
Immunogen:	RPL10A (NP_009035.3, 1 a.a. ~ 217 a.a) full-length human protein.
Sequence:	MSSKVS RDTLYEAVREVLHG NQRKR RKFLETVELQISLKNYDPQKDKRF SGTVRLKSTPRPKFSVCVLGDQQHCDEAKAVDIPHMDIEALKKLNKNKKL VKKLAKKYDAFLASESLIKQIPRILGPGLNKAGKFPSLLTHNENMVAKVDE VKSTIKFQMKKVLCLAVAVGHVKMTDDELVYNIHLAVNFLVSLKKKNWQN VRALYIKSTMGKPQRLY
Host:	Rabbit
Reactivity:	Human
Quality Control Testing:	Antibody reactive against mammalian transfected lysate.
Storage Buffer:	In 1x PBS, pH 7.4
Storage Instruction:	Store at -20°C or lower. Aliquot to avoid repeated freezing and thawing.
MSDS:	Download
Datasheet:	Download

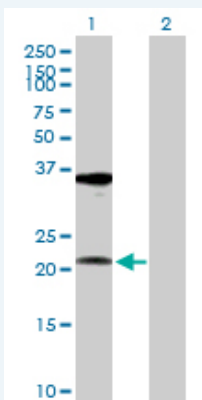
Application Image

Western Blot (Transfected lysate)



Applications

Western Blot (Transfected lysate)



Western Blot analysis of RPL10A expression in transfected 293T cell line ([H00004736-T02](#)) by RPL10A MaxPab polyclonal antibody.

Lane 1: RPL10A transfected lysate(24.80 KDa).

Lane 2: Non-transfected lysate.

[Protocol Download](#)

Gene Information

Entrez GeneID: [4736](#)

GeneBank [NM_007104.4](#)
Accession#:

Protein [NP_009035.3](#)
Accession#:

Gene Name: RPL10A

Gene Alias: Csa-19,NEDD6

Gene ribosomal protein L10a
Description:

Gene Ontology: [Hyperlink](#)

Gene Summary: Ribosomes, the organelles that catalyze protein synthesis, consist of a small 40S subunit and a large 60S subunit. Together these subunits are composed of 4 RNA species and approximately 80 structurally distinct proteins. This gene encodes a ribosomal protein that is a component of the 60S subunit. The protein belongs to the L1P family of ribosomal proteins. It is located in the cytoplasm. The expression of this gene is downregulated in the thymus by cyclosporin-A (CsA), an immunosuppressive drug. Studies in mice have shown that the expression of the ribosomal protein L10a gene is downregulated in neural precursor cells during development. This gene previously was referred to as NEDD6 (neural precursor cell expressed, developmentally downregulated 6), but it has been renamed RPL10A (ribosomal protein 10a). As is typical for genes encoding ribosomal proteins, there are multiple processed pseudogenes of this gene dispersed through the genome. [provided by RefSeq]

Other 60S ribosomal protein L10a,OTTHUMP00000016255
Designations:

Gene Pathway

[Ribosome](#)