



SZABO SCANDIC

Part of Europa Biosite

Produktinformation



Forschungsprodukte & Biochemikalien



Zellkultur & Verbrauchsmaterial



Diagnostik & molekulare Diagnostik



Laborgeräte & Service

Weitere Information auf den folgenden Seiten!
See the following pages for more information!



Lieferung & Zahlungsart

siehe unsere [Liefer- und Versandbedingungen](#)

Zuschläge

- Mindermengenzuschlag
- Trockeneiszuschlag
- Gefahrgutzuschlag
- Expressversand

SZABO-SCANDIC HandelsgmbH

Quellenstraße 110, A-1100 Wien

T. +43(0)1 489 3961-0

F. +43(0)1 489 3961-7

mail@szabo-scandic.com

www.szabo-scandic.com

[linkedin.com/company/szaboscandic](https://www.linkedin.com/company/szaboscandic) 

NELL1 purified MaxPab mouse polyclonal antibody (B01P) MaxPab®

Catalog # : H00004745-B01P

規格 : [50 ug]

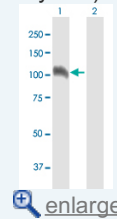
[List All](#)

Specification

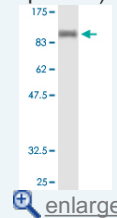
Product Description:	Mouse polyclonal antibody raised against a full-length human NELL1 protein.
Immunogen:	NELL1 (AAH69674.1, 1 a.a. ~ 810 a.a) full-length human protein.
Sequence:	MPMDLILVWFVCTARTVVGFGMDPDLQMDIVTELDLVNTTLGVAQVS GMHNASKAFLFQDIEREIHAAPHVSEKLIQLFRNKSEFTILATVQQKPSTS GVILSIRELEHSYFELESSGLRDEIRYHYIHNGKPRTEALPYRMADGQWHK VALSVSASHLLLHVDCNRIYERVIDPPDTNLPNGINLWLQQRNQHGLFK GIIQDGKIIIMPNGYITQCPNLNHTCPTCSDFLSLVQGIMDLQELLAKMTAK LNYAETRLSLENCHCEKTCQVSGLLYRDQDSWVDGDHCRNCTCKSG AVECRMSCPPLNCSPDSLPHIAGQCCKVCRPKCIYGGKVLAEGRILIT KSCRECRGGVLVKITEMCPPLNCSEKDHILPENQCCRVCGRGHNFCAEGP KCGENSECKNWNTKATCECKSGYISVQGDSAYCEDIDECAAKMHYCHAN TVCVNLPGLYRCDVPGYIRVDDFSCTEHDECGSGQHNCDENAICTNTV QGHSTCKPGYVNGTICRAFCEEGCRYGGTCVAPNKVCVPSGFTGS HCEKDIDECSEGIIECHNHSRCVNLPGWYHCECRSGFHDDGTYSLSGES CIDIDECALRTHTCWNSACINLAGGFDCPCSPGSPCSGDCPHEGGLKH NGQVWTLKEDRCSVCCKDGKIFCRRTACDCQNPADLFCPECDTRV TSQCLDQNGHKLYRSGDNWTHSCQQCRCLGEVDCWPLTCPNLSCEY TAILEGECPCRCVSDPCLADNITYDIRKTCLDYGVSRVSGSVWTMAGSP CTTCKCKNGRVCCSVDFECLQNN
Host:	Mouse
Reactivity:	Human
Quality Control Testing:	Antibody reactive against mammalian transfected lysate.
Storage Buffer:	In 1x PBS, pH 7.4
Storage Instruction:	Store at -20°C or lower. Aliquot to avoid repeated freezing and thawing.
MSDS:	Download
Datasheet:	Download

Application Image

Western Blot (Transfected lysate)



Western Blot (Recombinant protein)

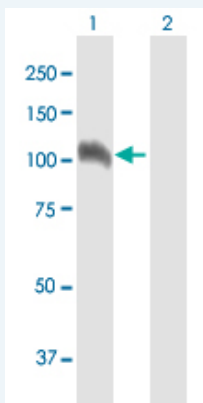


Publication Reference

- [Oligomerization-induced Conformational Change in the C-terminal Region of NELL1 Is Necessary for the Efficient Mediation of Murine MC3T3-E1 Cell Adhesion and Spreading.](#)
Nakamura Y, Hasebe A, Takahashi K, Iijima M, Yoshimoto N, Maturana AD, Ting K, Kuroda S, Niimi TJ Biol Chem. 2014 Feb 21.
- [Efficient Production and Characterization of Recombinant Human NELL1 Protein in Human Embryonic Kidney 293-F Cells.](#)
Hasebe A, Tashima H, Ide T, Iijima M, Yoshimoto N, Ting K, Kuroda S, Niimi T. Mol Biotechnol. 2011 Aug 5. [Epub ahead of print]

Applications

Western Blot (Transfected lysate)

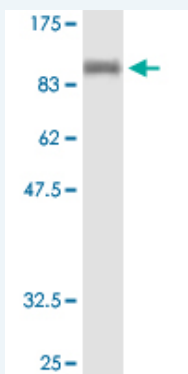


Western Blot analysis of NELL1 expression in transfected 293T cell line ([H00004745-T01](#)) by NELL1 MaxPab polyclonal antibody.

Lane 1: NELL1 transfected lysate(89.1 KDa).
Lane 2: Non-transfected lysate.

 [Protocol Download](#)

Western Blot (Recombinant protein)



Western Blot analysis of NELL1 recombinant protein ([H00004745-P01](#)) by NELL1 purified MaxPab mouse polyclonal antibody.

 [Protocol Download](#)

Gene Information

Entrez GeneID: [4745](#)

GeneBank Accession#: [BC069674.1](#)

Protein Accession#: [AAH69674.1](#)

Gene Name: NELL1

Gene Alias: FLJ45906, IDH3GL, NRP1

Gene Description: NEL-like 1 (chicken)

Omim ID: [602319](#)

Gene Ontology: [Hyperlink](#)

Gene Summary: This gene encodes a cytoplasmic protein that contains epidermal growth factor (EGF)-like repeats. The encoded heterotrimeric protein may be involved in cell growth regulation and differentiation. A similar protein in rodents is involved in craniosynostosis. Two transcript variants encoding different isoforms have been found for this gene.
[provided by RefSeq]

Other isocitrate dehydrogenase 3 (NAD+) gamma-like,nel-like 1,neural
Designations: epidermal growth factor-like 1

Related Disease

[Amyotrophic Lateral Sclerosis](#) [Amyotrophic lateral sclerosis](#) [Cardiovascular Diseases](#)
[Colitis, Ulcerative](#) [Crohn Disease](#) [Crohn's disease](#) [Diabetes Mellitus, Type 2](#)
[Disease Progression](#) [Disease Susceptibility](#) [Edema](#) [Genetic Predisposition to Disease](#)
[Inflammatory Bowel Diseases](#) [Osteoporosis](#) [Rectal Fistula](#) [Tobacco Use Disorder](#)

[服務條款](#) | [隱私權政策](#) | [著作及商標](#) | [網站地圖](#)

©2016 亞諾法生技股份有限公司 Abnova Corporation. 版權所有.