



SZABO SCANDIC

Part of Europa Biosite

Produktinformation



Forschungsprodukte & Biochemikalien



Zellkultur & Verbrauchsmaterial



Diagnostik & molekulare Diagnostik



Laborgeräte & Service

Weitere Information auf den folgenden Seiten!
See the following pages for more information!



Lieferung & Zahlungsart

siehe unsere [Liefer- und Versandbedingungen](#)

Zuschläge

- Mindermengenzuschlag
- Trockeneiszuschlag
- Gefahrgutzuschlag
- Expressversand

SZABO-SCANDIC HandelsgmbH

Quellenstraße 110, A-1100 Wien

T. +43(0)1 489 3961-0

F. +43(0)1 489 3961-7

mail@szabo-scandic.com

www.szabo-scandic.com

[linkedin.com/company/szaboscandic](https://www.linkedin.com/company/szaboscandic) 

NEFL purified MaxPab rabbit polyclonal antibody (D01P) MaxPab®

Catalog # : H00004747-D01P

規格 : [100 ug]

[List All](#)

Specification

Product Description:	Rabbit polyclonal antibody raised against a full-length human NEFL protein.
Immunogen:	NEFL (NP_006149.2, 1 a.a. ~ 543 a.a) full-length human protein.
Sequence:	MSSFSYEPYYSTSYKRRYVETPRVHISSVRSGYSTARSAYSSYSAPVSS LSVRRSYSSSSGSLMPSLENLDLSQVA AISNDLKSIRTQEKAQLQDLNDR FASFIERVHELEQQNKVLEAELLVLRQKHSEPSRFALYEQEIRDLRLAAE DATNEKQALQGEREGLEETLRNLQARYEEVLSREDAEGRLMEARKGA DEAALARAELEKRIDSLMDEISFLKKVHEEEIAELQAQIQYAQISVEMDVTK PDLAALKDIRAQYEKLAAKNMQNAEEWFKSRFTVLTESAANKNTDAVRA AKDEVSESRLLKAKTLEIEACRGMNEALEKQLQELEDKQNADISAMQDT INKLENELRRTTKSEMARYLKEYQDLLNVKMALDIEIAAYRKLLEGEETRLS FTSVGSITSGYSQSSQVFGRSAYGGLQTSYLYMSTRSFPSYYTSHVQE EQIEVEETIEAAKAAEEAKDEPPSEGEAEKKEEAEKKEEAEKKEEAEKKEE ESEEAKKEEKEEKGEGEGEEETKEAEKKEEKKVEGAGEEQAAKKKD
Host:	Rabbit
Reactivity:	Human
Quality Control Testing:	Antibody reactive against mammalian transfected lysate.
Storage Buffer:	In 1x PBS, pH 7.4
Storage Instruction:	Store at -20°C or lower. Aliquot to avoid repeated freezing and thawing.
MSDS:	Download
Datasheet:	Download

Publication Reference

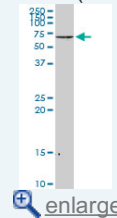
1. [Cytoskeletal proteins in the cerebrospinal fluid as biomarker of multiple sclerosis.](#)
Madeddu R, Farace C, Tolu P, Solinas G, Asara Y, Sotgiu MA, Delogu LG, Prados JC, Sotgiu S, Montella A. *Neurol Sci.* 2012 Feb 24. [Epub ahead of print]

Applications

Western Blot (Cell lysate)

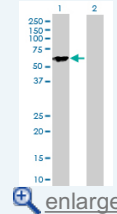
Application Image

Western Blot (Cell lysate)



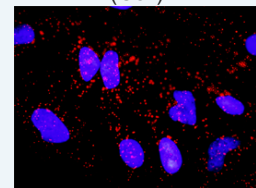
[enlarge](#)

Western Blot (Transfected lysate)

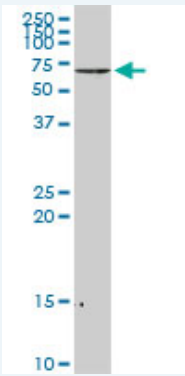


[enlarge](#)

In situ Proximity Ligation Assay (Cell)



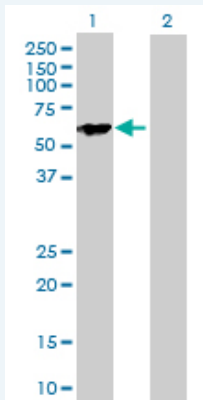
[enlarge](#)



NEFL MaxPab rabbit polyclonal antibody. Western Blot analysis of NEFL expression in HeLa S3 NE.

 [Protocol Download](#)

Western Blot (Transfected lysate)



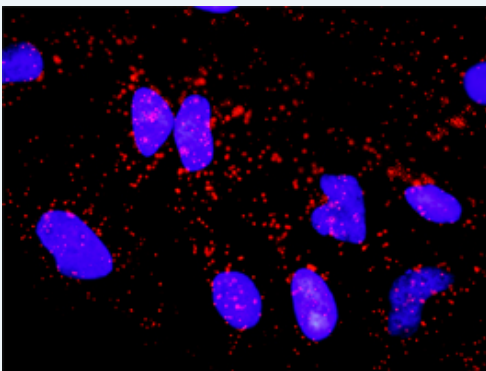
Western Blot analysis of NEFL expression in transfected 293T cell line ([H00004747-T01](#)) by NEFL MaxPab polyclonal antibody.

Lane 1: NEFL transfected lysate(61.50 KDa).

Lane 2: Non-transfected lysate.

 [Protocol Download](#)

In situ Proximity Ligation Assay (Cell)



Proximity Ligation Analysis of protein-protein interactions between NEFL and APP. HeLa cells were stained with anti-NEFL rabbit purified polyclonal 1:1200 and anti-APP mouse monoclonal antibody 1:50. Each red dot represents the detection of protein-protein interaction complex, and nuclei were counterstained with DAPI (blue).

Gene Information

Entrez GeneID: [4747](#)

GeneBank [NM_006158.2](#)

Accession#:

Protein [NP_006149.2](#)

Accession#:

Gene Name: NEFL

Gene Alias: CMT1F,CMT2E,FLJ53642,NF-L,NF68,NFL

Gene Description: neurofilament, light polypeptide

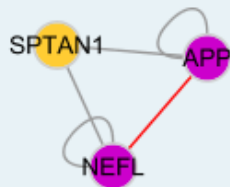
Omim ID: [162280](#), [607684](#), [607734](#)

Gene Ontology: [Hyperlink](#)

Gene Summary: Neurofilaments are type IV intermediate filament heteropolymers composed of light, medium, and heavy chains. Neurofilaments comprise the axoskeleton and they functionally maintain the neuronal caliber. They may also play a role in intracellular transport to axons and dendrites. This gene encodes the light chain neurofilament protein. Mutations in this gene cause Charcot-Marie-Tooth disease types 1F (CMT1F) and 2E (CMT2E), disorders of the peripheral nervous system that are characterized by distinct neuropathies. A pseudogene has been identified on chromosome Y. [provided by RefSeq]

Other Designations: light molecular weight neurofilament protein,neurofilament protein, light chain,neurofilament subunit NF-L,neurofilament triplet L protein,neurofilament, light polypeptide 68kDa,neurofilament-light

Interactome



Gene Pathway

[Amyotrophic lateral sclerosis \(ALS\)](#)

Related Disease

[Genetic Predisposition to Disease](#) [Kidney Failure](#), [Chronic Multiple Sclerosis](#)
[Parkinson Disease](#) [Parkinson disease](#)