



SZABO SCANDIC

Part of Europa Biosite

Produktinformation



Forschungsprodukte & Biochemikalien



Zellkultur & Verbrauchsmaterial



Diagnostik & molekulare Diagnostik



Laborgeräte & Service

Weitere Information auf den folgenden Seiten!
See the following pages for more information!



Lieferung & Zahlungsart

siehe unsere [Liefer- und Versandbedingungen](#)

Zuschläge

- Mindermengenzuschlag
- Trockeneiszuschlag
- Gefahrgutzuschlag
- Expressversand

SZABO-SCANDIC HandelsgmbH

Quellenstraße 110, A-1100 Wien

T. +43(0)1 489 3961-0

F. +43(0)1 489 3961-7

mail@szabo-scandic.com

www.szabo-scandic.com

[linkedin.com/company/szaboscandic](https://www.linkedin.com/company/szaboscandic) 

NEFL 293T Cell Transient Overexpression Lysate(Denatured)

Catalog # : H00004747-T01

規格 : [100 uL]

List All

Specification

Transfected Cell Line: 293T

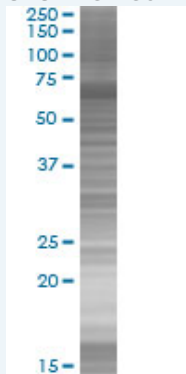
Plasmid: pCMV-NEFL full-length

Host: Human

Theoretical MW (kDa): 59.84

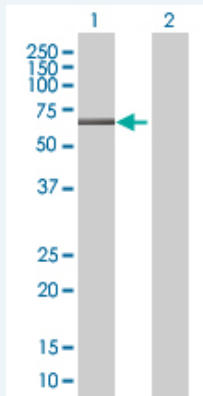
Quality Control Testing: Transient overexpression cell lysate was tested with Anti-NEFL antibody (H00004747-B01) by Western Blots.

SDS-PAGE Gel



NEFL transfected lysate.

Western Blot



Lane 1: NEFL transfected lysate (59.84 KDa)

Lane 2: Non-transfected lysate.

Storage Buffer: 1X Sample Buffer (50 mM Tris-HCl, 2% SDS, 10% glycerol, 300 mM 2-mercaptoethanol, 0.01% Bromophenol blue)

Storage Instruction: Store at -80°C. Aliquot to avoid repeated freezing and thawing.

MSDS:  [Download](#)

Applications

Western Blot

Gene Information

Entrez GeneID: [4747](#)

GeneBank [NM_006158.2](#)
Accession#:

Protein =
Accession#:

Gene Name: NEFL

Gene Alias: CMT1F,CMT2E,FLJ53642,NF-L,NF68,NFL

Gene Description: neurofilament, light polypeptide

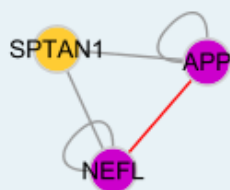
Omim ID: [162280](#), [607684](#), [607734](#)

Gene Ontology: [Hyperlink](#)

Gene Summary: Neurofilaments are type IV intermediate filament heteropolymers composed of light, medium, and heavy chains. Neurofilaments comprise the axoskeleton and they functionally maintain the neuronal caliber. They may also play a role in intracellular transport to axons and dendrites. This gene encodes the light chain neurofilament protein. Mutations in this gene cause Charcot-Marie-Tooth disease types 1F (CMT1F) and 2E (CMT2E), disorders of the peripheral nervous system that are characterized by distinct neuropathies. A pseudogene has been identified on chromosome Y. [provided by RefSeq]

Other Designations: light molecular weight neurofilament protein,neurofilament protein, light chain,neurofilament subunit NF-L,neurofilament triplet L protein,neurofilament, light polypeptide 68kDa,neurofilament-light

Interactome



Gene Pathway

[Amyotrophic lateral sclerosis \(ALS\)](#)

Related Disease

