



# SZABO SCANDIC

Part of Europa Biosite

## Produktinformation



Forschungsprodukte & Biochemikalien



Zellkultur & Verbrauchsmaterial



Diagnostik & molekulare Diagnostik



Laborgeräte & Service

Weitere Information auf den folgenden Seiten!  
See the following pages for more information!



### Lieferung & Zahlungsart

siehe unsere [Liefer- und Versandbedingungen](#)

### Zuschläge

- Mindermengenzuschlag
- Trockeneiszuschlag
- Gefahrgutzuschlag
- Expressversand

### SZABO-SCANDIC HandelsgmbH

Quellenstraße 110, A-1100 Wien

T. +43(0)1 489 3961-0

F. +43(0)1 489 3961-7

[mail@szabo-scandic.com](mailto:mail@szabo-scandic.com)

[www.szabo-scandic.com](http://www.szabo-scandic.com)

[linkedin.com/company/szaboscandic](https://www.linkedin.com/company/szaboscandic) 



## NELL2 monoclonal antibody (M03), clone 2D11

Catalog # : H00004753-M03

規格 : [ 100 ug ]

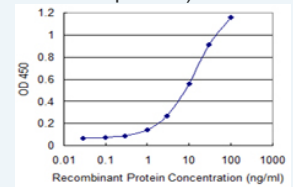
[List All](#)


### Specification

<b>Product Description:</b>	Mouse monoclonal antibody raised against a partial recombinant NELL2.
<b>Immunogen:</b>	NELL2 (NP_006150.1, 301 a.a. ~ 400 a.a) partial recombinant protein with GST tag. MW of the GST tag alone is 26 KDa.
<b>Sequence:</b>	IQCETLICPNPDCPLKSALAYVDGKCCKECKSICQFQGRTYFEGERNVYSSSGVCVLYECKDQTMKLVESGCPALDCPESHQITLSHSCCKVCKGYDF
<b>Host:</b>	Mouse
<b>Reactivity:</b>	Human
<b>Isotype:</b>	IgG1 Kappa
<b>Quality Control Testing:</b>	Antibody Reactive Against Recombinant Protein.
<b>Storage Buffer:</b>	In 1x PBS, pH 7.4
<b>Storage Instruction:</b>	Store at -20°C or lower. Aliquot to avoid repeated freezing and thawing.
<b>MSDS:</b>	 <a href="#">Download</a>
<b>Datasheet:</b>	 <a href="#">Download</a>

### Application Image

Sandwich ELISA (Recombinant protein)

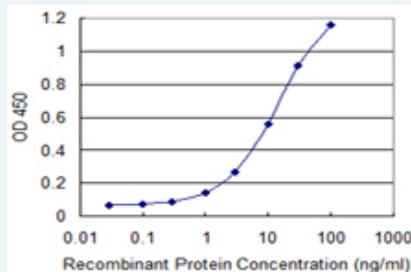


 [enlarge](#)

ELISA

### Applications

Sandwich ELISA (Recombinant protein)



Detection limit for recombinant GST tagged NELL2 is 0.3 ng/ml as a capture antibody.

 [Protocol Download](#)

ELISA

### Gene Information

Entrez GeneID: [4753](#)

GeneBank Accession#: [NM\\_006159](#)

**Protein Accession#:** [NP\\_006150.1](#)

**Gene Name:** NELL2

**Gene Alias:** NRP2

**Gene Description:** NEL-like 2 (chicken)

**Omim ID:** [602320](#)

**Gene Ontology:** [Hyperlink](#)

**Gene Summary:** The protein encoded by this gene is a glycoprotein containing several von Willebrand factor C domains and epidermal growth factor (EGF)-like domains. The encoded protein acts as a homotrimer and is found in the cytoplasm. Several variants encoding a few different isoforms exist, and at least one isoform appears to be a secreted protein. Studies in mouse suggest that this protein plays a role in neural cell growth and differentiation as well as in oncogenesis. [provided by RefSeq]

**Other Designations:** nel-like 2,neural epidermal growth factor-like 2

#### **Related Disease**

[Tobacco Use Disorder](#)