



SZABO SCANDIC

Part of Europa Biosite

Produktinformation



Forschungsprodukte & Biochemikalien



Zellkultur & Verbrauchsmaterial



Diagnostik & molekulare Diagnostik



Laborgeräte & Service

Weitere Information auf den folgenden Seiten!
See the following pages for more information!



Lieferung & Zahlungsart

siehe unsere [Liefer- und Versandbedingungen](#)

Zuschläge

- Mindermengenzuschlag
- Trockeneiszuschlag
- Gefahrgutzuschlag
- Expressversand

SZABO-SCANDIC HandelsgmbH

Quellenstraße 110, A-1100 Wien

T. +43(0)1 489 3961-0

F. +43(0)1 489 3961-7

mail@szabo-scandic.com

www.szabo-scandic.com

[linkedin.com/company/szaboscandic](https://www.linkedin.com/company/szaboscandic) 

NF2 purified MaxPab mouse polyclonal antibody (B02P) MaxPab®

Catalog # : H00004771-B02P

規格 : [50 ug]

[List All](#)

Specification

Product Description: Mouse polyclonal antibody raised against a full-length human NF2 protein.

Immunogen: NF2 (NP_861968.1, 1 a.a. ~ 507 a.a) full-length human protein.

Sequence:
 MAGAIASRMSFSSLKRKQPKTFTVRIVTMDAEMEFNCEVKKQILDEKIYC
 PPEASVLLASYAVQAKYGDYDPSVHKGFLAQEELLPKRVINLYQMTPE
 MWEERITAWYAEHRGRARDEAEMEYLKIAQDLEMYGVNYFAIRNKKGTE
 LLLGVDALGLHYDPENRLTPKISFPWNEIRNISYSDKEFTIKPLDKKIDVFK
 FNSSKLRVNLILQLCIGNHDLFMRRRKADSLEVQMQKAQAREEKARKQ
 MERQRLAREKQMRREEAERTRDELERRLLQMKEEATMANEALMRSEETA
 DLLAEKAQITEEEAKLLAQKAAEAQEMQRIKATAIRTEEEKRLMEQKYLE
 AEVLALKMAEESERRAKEADQLKQDLQEAREAERRAKQKLEIATKPTY
 PPMNPIPAPLPPDIPSFNLIGDSLFSDFKDTDMKRLSMEIEKEKVEYMEKS
 KHLQEQLNELKTEIEALKKERETALDILHNENSDRGGSSKHNTIKKPQAQ
 GRRPICI

Host: Mouse

Reactivity: Human

Quality Control Testing: Antibody reactive against mammalian transfected lysate.

Storage Buffer: In 1x PBS, pH 7.4

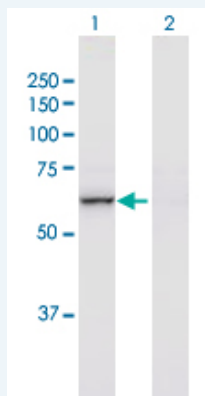
Storage Instruction: Store at -20°C or lower. Aliquot to avoid repeated freezing and thawing.

MSDS:  [Download](#)

Datasheet:  [Download](#)

Applications

Western Blot (Transfected lysate)

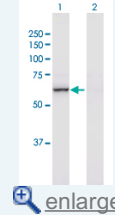



Western Blot analysis of NF2 expression in transfected 293T cell line (H00004771-T02) by NF2 MaxPab polyclonal antibody.

Lane 1: NF2 transfected lysate(55.77 kDa).

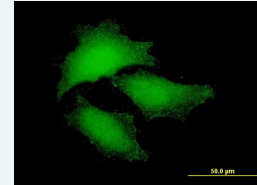
Application Image


Western Blot (Transfected lysate)

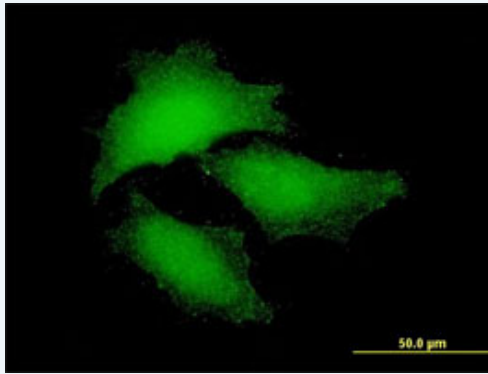


 [enlarge](#)

Immunofluorescence



 [enlarge](#)

Immunofluorescence
 [enlarge this image](#)

Immunofluorescence of purified MaxPab antibody to NF2 on HeLa cell. [antibody concentration 10 ug/ml]

Gene Information

Entrez GeneID: [4771](#)

GeneBank Accession#: [NM_181830](#)

Protein Accession#: [NP_861968.1](#)

Gene Name: NF2

Gene Alias: ACN,BANF,SCH

Gene Description: neurofibromin 2 (merlin)

Omim ID: [101000](#), [162091](#), [607174](#), [607379](#)

Gene Ontology: [Hyperlink](#)

Gene Summary: This gene encodes a protein that is similar to some members of the ERM (ezrin, radixin, moesin) family of proteins that are thought to link cytoskeletal components with proteins in the cell membrane. This gene product has been shown to interact with cell-surface proteins, proteins involved in cytoskeletal dynamics and proteins involved in regulating ion transport. This gene is expressed at high levels during embryonic development; in adults, significant expression is found in Schwann cells, meningeal cells, lens and nerve. Mutations in this gene are associated with neurofibromatosis type II which is characterized by nervous system and skin tumors and ocular abnormalities. Two predominant isoforms and a number of minor isoforms are produced by alternatively spliced transcripts. [provided by RefSeq]

Other Designations: merlin, moesin-ezrin-radixin like, moesin-ezrin-radixin-like protein, neurofibromin 2, neurofibromin 2 (bilateral acoustic neuroma), schwannomerlin, schwannomin

Related Disease

[Disease Progression](#) [Disease Susceptibility](#) [Genetic Predisposition to Disease](#)
[HIV Infections](#) [Meningeal Neoplasms](#) [Meningioma](#) [Neoplasms, Radiation-Induced](#)
[Nervous System Neoplasms](#) [Neurofibromatosis](#) [Neurofibromatosis 2](#) [Neuroma, Acoustic](#)
[Pancreatic cancer](#) [Pancreatic Neoplasms](#) [Tobacco Use Disorder](#)

