



# SZABO SCANDIC

Part of Europa Biosite

## Produktinformation



Forschungsprodukte & Biochemikalien



Zellkultur & Verbrauchsmaterial



Diagnostik & molekulare Diagnostik



Laborgeräte & Service

Weitere Information auf den folgenden Seiten!  
See the following pages for more information!



### Lieferung & Zahlungsart

siehe unsere [Liefer- und Versandbedingungen](#)

### Zuschläge

- Mindermengenzuschlag
- Trockeneiszuschlag
- Gefahrgutzuschlag
- Expressversand

### SZABO-SCANDIC HandelsgmbH

Quellenstraße 110, A-1100 Wien

T. +43(0)1 489 3961-0

F. +43(0)1 489 3961-7

[mail@szabo-scandic.com](mailto:mail@szabo-scandic.com)

[www.szabo-scandic.com](http://www.szabo-scandic.com)

[linkedin.com/company/szaboscandic](https://www.linkedin.com/company/szaboscandic) 

## NFE2 monoclonal antibody (M01), clone 2C6

Catalog # : H00004778-M01

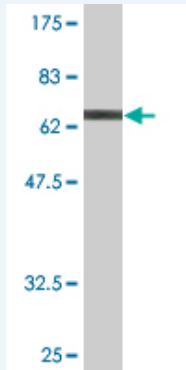
規格 : [ 100 ug ]

[List All](#)

### Specification

<b>Product Description:</b>	Mouse monoclonal antibody raised against a full-length recombinant NFE2.
<b>Immunogen:</b>	NFE2 (AAH05044, 1 a.a. ~ 373 a.a) full-length recombinant protein with GST tag. MW of the GST tag alone is 26 KDa.
<b>Sequence:</b>	MSPCPPQQSRNRVQLSTSELGEMELTWQEIMSITELQGLNAPSEPSFE PQAPAPYLGPPPTTYCPSIHPDSGFPLPPPPYELPASTSHVPDPPYSY GNMAIPVSKPLSLSGLLSEPLQDPLALLDIGLPAGPPKQEDPESDGLS LNYSDAESLELEGTEAGRRRSEYVEMYPVEYPYSLMPNSLAHSNYTLPA AETPLALEPSSGPVRAKPTARGEAGSRDERRALAMKIPFPTDKIVNLPVD DFNELLARYPLTESQLALVRDIRRRGKNKVAQNCRRKLETIVQLEREL ERLTNERERLLRARGEADRTLEVMRQQLTELYRDFIQHLRDESGNSYSP EAYALQQAADGTIFLVPRGTKMEATD
<b>Host:</b>	Mouse
<b>Reactivity:</b>	Human
<b>Isotype:</b>	IgG2a Kappa

**Quality Control Testing:** Antibody Reactive Against Recombinant Protein.



Western Blot detection against Immunogen (66.77 KDa) .

**Storage Buffer:** In 1x PBS, pH 7.4

**Storage Instruction:** Store at -20°C or lower. Aliquot to avoid repeated freezing and thawing.

**MSDS:** [Download](#)

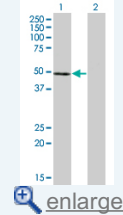
**Datasheet:** [Download](#)

### Applications

**Western Blot (Transfected lysate)**

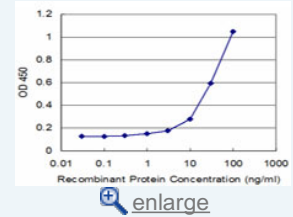
### Application Image

Western Blot (Transfected lysate)

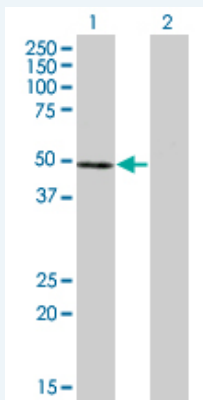


Western Blot (Recombinant protein)

Sandwich ELISA (Recombinant protein)



ELISA



Western Blot analysis of NFE2 expression in transfected 293T cell line by NFE2 monoclonal antibody (M01), clone 2C6.

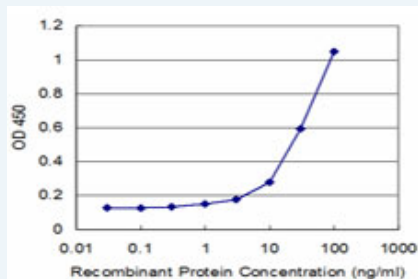
Lane 1: NFE2 transfected lysate(41.5 KDa).  
Lane 2: Non-transfected lysate.

[Protocol Download](#)

#### Western Blot (Recombinant protein)

[Protocol Download](#)

#### Sandwich ELISA (Recombinant protein)



Detection limit for recombinant GST tagged NFE2 is approximately 3ng/ml as a capture antibody.

[Protocol Download](#)

#### ELISA

#### Gene Information

Entrez GeneID: [4778](#)

GeneBank [BC005044](#)  
Accession#:

Protein [AAH05044](#)  
Accession#:

Gene Name: NFE2

Gene Alias: NF-E2,p45

Gene Description: nuclear factor (erythroid-derived 2), 45kDa

Omim ID: [601490](#)

Gene Ontology: [Hyperlink](#)

Other Designations: -

