



# SZABO SCANDIC

Part of Europa Biosite

## Produktinformation



Forschungsprodukte & Biochemikalien



Zellkultur & Verbrauchsmaterial



Diagnostik & molekulare Diagnostik



Laborgeräte & Service

Weitere Information auf den folgenden Seiten!  
See the following pages for more information!



### Lieferung & Zahlungsart

siehe unsere [Liefer- und Versandbedingungen](#)

### Zuschläge

- Mindermengenzuschlag
- Trockeneiszuschlag
- Gefahrgutzuschlag
- Expressversand

### SZABO-SCANDIC HandelsgmbH

Quellenstraße 110, A-1100 Wien

T. +43(0)1 489 3961-0

F. +43(0)1 489 3961-7

[mail@szabo-scandic.com](mailto:mail@szabo-scandic.com)

[www.szabo-scandic.com](http://www.szabo-scandic.com)

[linkedin.com/company/szaboscandic](https://www.linkedin.com/company/szaboscandic) 

## NFE2L2 monoclonal antibody (M03), clone 1B8

Catalog # : H00004780-M03

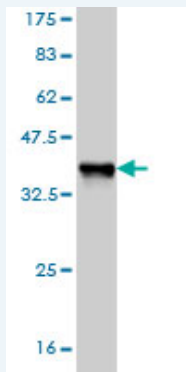
規格 : [ 100 ug ]

[List All](#)

### Specification

<b>Product Description:</b>	Mouse monoclonal antibody raised against a partial recombinant NFE2L2.
<b>Immunogen:</b>	NFE2L2 (AAH11558, 71 a.a. ~ 170 a.a) partial recombinant protein with GST tag. MW of the GST tag alone is 26 KDa.
<b>Sequence:</b>	FAQLQLDEETGEFLPIQPAQHIQSETSGSANYSQVAHIPKSDALYFDDCMQLLAQTFPFVDDNEVSSATFQSLVPDIPGHIESPVFIATNQAQSPETSVA
<b>Host:</b>	Mouse
<b>Reactivity:</b>	Human
<b>Isotype:</b>	IgG2b Kappa

**Quality Control Testing:** Antibody Reactive Against Recombinant Protein.



Western Blot detection against Immunogen (36.63 KDa) .

**Storage Buffer:** In 1x PBS, pH 7.4

**Storage Instruction:** Store at -20°C or lower. Aliquot to avoid repeated freezing and thawing.

**MSDS:** [Download](#)

**Datasheet:** [Download](#)

### Publication Reference

1. [Examining the endogenous antioxidant response through immunofluorescent analysis of Nrf2 in tissue.](#)  
Lindl KA, Jordan-Sciutto KL. Methods Mol Biol. 2008;477:229-43.

### Applications

**Western Blot (Recombinant protein)**

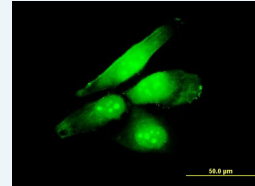
[Protocol Download](#)

**Immunofluorescence**

### Application Image

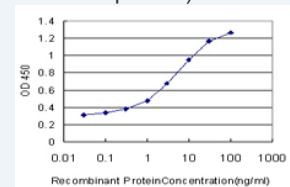
Western Blot (Recombinant protein)

Immunofluorescence



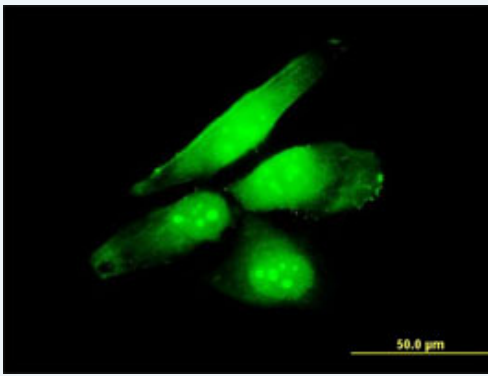
[enlarge](#)

Sandwich ELISA (Recombinant protein)



[enlarge](#)

ELISA

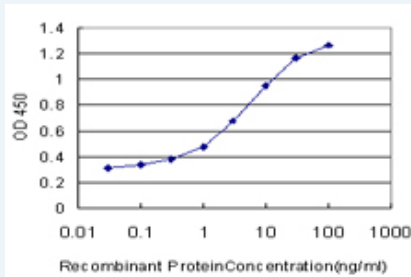


[enlarge this image](#)

Immunofluorescence of monoclonal antibody to NFE2L2 on HeLa cell . [antibody concentration 10 ug/ml]

[Protocol Download](#)

### Sandwich ELISA (Recombinant protein)



Detection limit for recombinant GST tagged NFE2L2 is approximately 0.1ng/ml as a capture antibody.

[Protocol Download](#)

### ELISA

#### Gene Information

Entrez GeneID: [4780](#)

GeneBank [BC011558](#)

Accession#:

Protein [AAH11558](#)

Accession#:

Gene Name: NFE2L2

Gene Alias: NRF2

Gene Description: nuclear factor (erythroid-derived 2)-like 2

Omim ID: [600492](#)

Gene Ontology: [Hyperlink](#)

**Gene Summary:** NFE2 (MIM 601490), NFE2L1 (MIM 163260), and NFE2L2 comprise a family of human genes encoding basic leucine zipper (bZIP) transcription factors. They share highly conserved regions that are distinct from other bZIP families, such as JUN (MIM 165160) and FOS (MIM 164810), although remaining regions have diverged considerably from each other (Chan et al., 1995 [PubMed 7868116]).[supplied by OMIM]

Other Designations: NF-E2-related factor 2, OTTHUMP00000164988

Designations:

#### Related Disease

[Adenoma](#) [Alzheimer Disease](#) [Asthma](#) [Atherosclerosis](#) [Breast cancer](#) [Breast Neoplasms](#)  
[Calcinosis](#) [Carcinoma, Squamous Cell](#) [Cataract](#) [Chronic Disease](#) [Colitis, Ulcerative](#)  
[Colorectal Neoplasms](#) [Coronary Artery Disease](#) [Disease Progression](#) [Gastritis](#)  
[Genetic Predisposition to Disease](#) [Helicobacter Infections](#) [Lung Neoplasms](#)  
[Lupus Erythematosus, Systemic](#)

**... see more**

---

[服務條款](#) | [隱私權政策](#) | [著作及商標](#) | [網站地圖](#)

©2016 亞諾法生技股份有限公司 Abnova Corporation. 版權所有.