



# SZABO SCANDIC

Part of Europa Biosite

## Produktinformation



Forschungsprodukte & Biochemikalien



Zellkultur & Verbrauchsmaterial



Diagnostik & molekulare Diagnostik



Laborgeräte & Service

Weitere Information auf den folgenden Seiten!  
See the following pages for more information!



### Lieferung & Zahlungsart

siehe unsere [Liefer- und Versandbedingungen](#)

### Zuschläge

- Mindermengenzuschlag
- Trockeneiszuschlag
- Gefahrgutzuschlag
- Expressversand

### SZABO-SCANDIC HandelsgmbH

Quellenstraße 110, A-1100 Wien

T. +43(0)1 489 3961-0

F. +43(0)1 489 3961-7

[mail@szabo-scandic.com](mailto:mail@szabo-scandic.com)

[www.szabo-scandic.com](http://www.szabo-scandic.com)

[linkedin.com/company/szaboscandic](https://www.linkedin.com/company/szaboscandic) 

## NFE2L2 monoclonal antibody (M06), clone 4C3

Catalog # : H00004780-M06

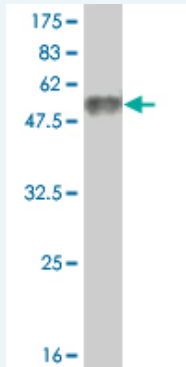
規格 : [ 100 ug ]

List All

### Specification

<b>Product Description:</b>	Mouse monoclonal antibody raised against a full length recombinant NFE2L2.
<b>Immunogen:</b>	NFE2L2 (NP_006155.2, 351 a.a. ~ 450 a.a) full-length recombinant protein with GST tag. MW of the GST tag alone is 26 KDa.
<b>Sequence:</b>	SPSVASPEHSVESSSYGDTLLGLSDSEVEELDSAPGSVKQNGPKTPVHS SGDMVQPLSPSQGGQSTHVHDAQCENTPEKELVSPGHRKTPFTKDKHS SRL
<b>Host:</b>	Mouse
<b>Reactivity:</b>	Human
<b>Isotype:</b>	IgG2a Kappa

**Quality Control Testing:** Antibody Reactive Against Recombinant Protein.



Western Blot detection against Immunogen (36.63 KDa) .

**Storage Buffer:** In 1x PBS, pH 7.4

**Storage Instruction:** Store at -20°C or lower. Aliquot to avoid repeated freezing and thawing.

**MSDS:** [Download](#)

**Datasheet:** [Download](#)

### Applications

Western Blot (Recombinant protein)

[Protocol Download](#)

ELISA

### Gene Information

Entrez GeneID: [4780](#)

**GeneBank  
Accession#:** [NM\\_006164](#)

**Protein  
Accession#:** [NP\\_006155.2](#)

**Gene Name:** NFE2L2

**Gene Alias:** NRF2

**Gene  
Description:** nuclear factor (erythroid-derived 2)-like 2

**Omim ID:** [600492](#)

**Gene Ontology:** [Hyperlink](#)

**Gene Summary:** NFE2 (MIM 601490), NFE2L1 (MIM 163260), and NFE2L2 comprise a family of human genes encoding basic leucine zipper (bZIP) transcription factors. They share highly conserved regions that are distinct from other bZIP families, such as JUN (MIM 165160) and FOS (MIM 164810), although remaining regions have diverged considerably from each other (Chan et al., 1995 [PubMed 7868116]).[supplied by OMIM]

**Other  
Designations:** NF-E2-related factor 2,OTTHUMP00000164988

#### **Related Disease**

[Adenoma](#) [Alzheimer Disease](#) [Asthma](#) [Atherosclerosis](#) [Breast cancer](#) [Breast Neoplasms](#)  
[Calcinosis](#) [Carcinoma, Squamous Cell](#) [Cataract](#) [Chronic Disease](#) [Colitis, Ulcerative](#)  
[Colorectal Neoplasms](#) [Coronary Artery Disease](#) [Disease Progression](#) [Gastritis](#)  
[Genetic Predisposition to Disease](#) [Helicobacter Infections](#) [Lung Neoplasms](#)  
[Lupus Erythematosus, Systemic](#)

**... see more**