



SZABO SCANDIC

Part of Europa Biosite

Produktinformation



Forschungsprodukte & Biochemikalien



Zellkultur & Verbrauchsmaterial



Diagnostik & molekulare Diagnostik



Laborgeräte & Service

Weitere Information auf den folgenden Seiten!
See the following pages for more information!



Lieferung & Zahlungsart

siehe unsere [Liefer- und Versandbedingungen](#)

Zuschläge

- Mindermengenzuschlag
- Trockeneiszuschlag
- Gefahrgutzuschlag
- Expressversand

SZABO-SCANDIC HandelsgmbH

Quellenstraße 110, A-1100 Wien

T. +43(0)1 489 3961-0

F. +43(0)1 489 3961-7

mail@szabo-scandic.com

www.szabo-scandic.com

[linkedin.com/company/szaboscandic](https://www.linkedin.com/company/szaboscandic) 

NFKBIB monoclonal antibody (M04), clone 3B5

Catalog # : H00004793-M04

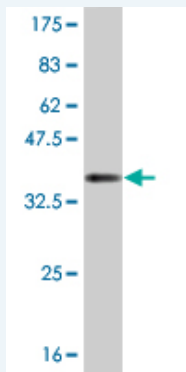
規格 : [100 ug]

[List All](#)

Specification

Product Description:	Mouse monoclonal antibody raised against a partial recombinant NFKBIB.
Immunogen:	NFKBIB (AAH15528, 56 a.a. ~ 145 a.a) partial recombinant protein with GST tag. MW of the GST tag alone is 26 KDa.
Sequence:	EDGDTALHLAVIHQHEPFLDFLLGFSGATEYMDLQNDLGQTALHLAAILGETSTVEKLYAAGAGLCVAERRGHTALHLACRVGAHACARA
Host:	Mouse
Reactivity:	Human
Isotype:	IgG2a Kappa

Quality Control Testing: Antibody Reactive Against Recombinant Protein.



Western Blot detection against Immunogen (35.53 KDa) .

Storage Buffer: In 1x PBS, pH 7.4

Storage Instruction: Store at -20°C or lower. Aliquot to avoid repeated freezing and thawing.

MSDS: [Download](#)

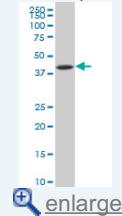
Datasheet: [Download](#)

Applications

Western Blot (Cell lysate)

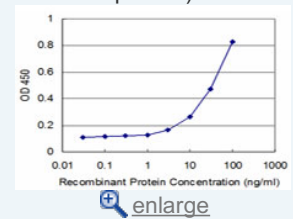
Application Image

Western Blot (Cell lysate)

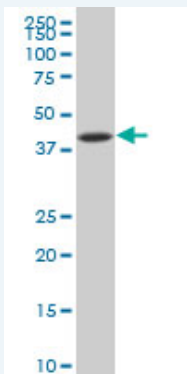


Western Blot (Recombinant protein)

Sandwich ELISA (Recombinant protein)



ELISA



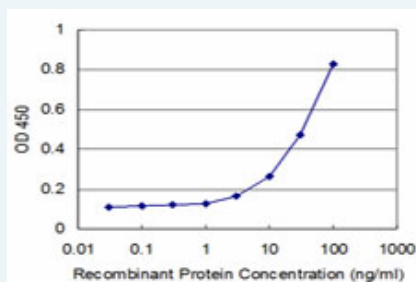
NFKBIB monoclonal antibody (M04), clone 3B5 Western Blot analysis of NFKBIB expression in HL-60 (Cat # L014V1).

[Protocol Download](#)

Western Blot (Recombinant protein)

[Protocol Download](#)

Sandwich ELISA (Recombinant protein)



Detection limit for recombinant GST tagged NFKBIB is approximately 3ng/ml as a capture antibody.

[Protocol Download](#)

ELISA

Gene Information

Entrez GeneID: [4793](#)

GeneBank [BC015528](#)

Accession#:

Protein [AAH15528](#)

Accession#:

Gene Name: NFKBIB

Gene Alias: IKBB,TRIP9

Gene Description: nuclear factor of kappa light polypeptide gene enhancer in B-cells inhibitor, beta

Omim ID: [604495](#)

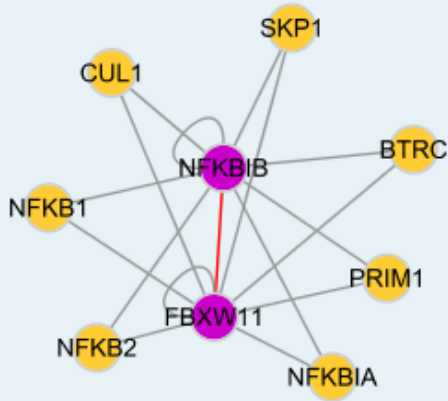
Gene Ontology: [Hyperlink](#)

Gene Summary: NFKB1 (MIM 164011) or NFKB2 (MIM 164012) is bound to REL (MIM 164910), RELB (MIM 164014), or RELB (MIM 604758) to form the NFkB complex. The NFkB complex is inhibited by I-kappa-B proteins (NFKBIA, MIM 164008, or NFKBIB), which inactivate NF-kappa-B by trapping it in the cytoplasm. Phosphorylation of serine residues on the I-kappa-B proteins by kinases (IKBKA, MIM 600664 or IKBKB, MIM 603258) marks them for destruction via the ubiquitination pathway, thereby allowing activation of the NF-kappa-B complex. Activated NFkB complex translocates into the nucleus and binds DNA at kappa-B-binding motifs

such as 5-prime GGGRNNYYCC 3-prime or 5-prime HGGARNYYCC 3-prime (where H is A, C, or T; R is an A or G purine; and Y is a C or T pyrimidine).[supplied by OMIM]

Other -
Designations:

Interactome



Gene Pathway

[Adipocytokine signaling pathway](#) [B cell receptor signaling pathway](#)
[Chemokine signaling pathway](#) [Neurotrophin signaling pathway](#)
[T cell receptor signaling pathway](#)

Related Disease

[Arthritis, Rheumatoid](#) [Atherosclerosis](#) [Calcinosis](#) [Cardiovascular Diseases](#)
[Connective Tissue Diseases](#) [Coronary Artery Disease](#) [Diabetes Mellitus, Type 2](#)
[Disease Susceptibility](#) [Edema](#) [Empyema, Pleural](#) [Fetal Diseases](#)
[Genetic Predisposition to Disease](#) [Head and Neck Neoplasms](#) [HIV Infections](#) [Inflammation](#)
[Lymphoma, Non-Hodgkin](#) [Musculoskeletal Diseases](#) [Neoplasm Recurrence, Local](#)
[Neoplasms, Second Primary](#)

... see more

[服務條款](#) | [隱私權政策](#) | [著作及商標](#) | [網站地圖](#)

©2016 亞諾法生技股份有限公司 Abnova Corporation. 版權所有.