



# SZABO SCANDIC

Part of Europa Biosite

## Produktinformation



Forschungsprodukte & Biochemikalien



Zellkultur & Verbrauchsmaterial



Diagnostik & molekulare Diagnostik



Laborgeräte & Service

Weitere Information auf den folgenden Seiten!  
See the following pages for more information!



### Lieferung & Zahlungsart

siehe unsere [Liefer- und Versandbedingungen](#)

### Zuschläge

- Mindermengenzuschlag
- Trockeneiszuschlag
- Gefahrgutzuschlag
- Expressversand

### SZABO-SCANDIC HandelsgmbH

Quellenstraße 110, A-1100 Wien

T. +43(0)1 489 3961-0

F. +43(0)1 489 3961-7

[mail@szabo-scandic.com](mailto:mail@szabo-scandic.com)

[www.szabo-scandic.com](http://www.szabo-scandic.com)

[linkedin.com/company/szaboscandic](https://www.linkedin.com/company/szaboscandic) 

**NFKBIL2 purified MaxPab mouse polyclonal antibody (B01P)** MaxPab®

Catalog # : H00004796-B01P

規格 : [ 50 ug ]

[List All](#)

**Specification**

**Product Description:** Mouse polyclonal antibody raised against a full-length human NFKBIL2 protein.

**Immunogen:** NFKBIL2 (AAH08782.1, 1 a.a. ~ 1219 a.a) full-length human protein.

**Sequence:**  
 MRTRLYLNLGLTFESLQQTALCNDYFRKSIFLAEQNHLYEDLFRARYNL  
 GTIHWRAQHSQAMRCLLEGARECAHTMRKRMESECCVIAQVLQDLG  
 DFLAAKRALKKAYRLGSQKPVQRAAICQNLQHVLAVVRLQQQLEEAAGR  
 DPQGAMVICEQLGDLFSKAGDFPRAAEAYQKQLRFAELLDRPGAERAIH  
 VSLATTLGDMKDHGAVRHYEELRLRSGNVLEEAKTWNIALSREEAG  
 DAYELLAPCFQKALSQAQQAQRPLQRQVLQHLHTVQLRLQPQAPET  
 ETRLRELSVAEDEDEEEEAEEAAATAESEALEAGEVELSEGEDDTDGLT  
 PQLEEDEELQGHLGRRKGSKWNRNDMGETLLHRACIEGQLRRVQDLV  
 RQGHPNPRDYCGWTPLHEACNYGHLEIVRFLLDHGAAVDDPGGQGC  
 GITPLHDALNCGHFEVAELLERLGERASVTLRTRKGLSPLETLQQWVKLYR  
 RDLDLRTRQKARAMEMLLQAAASGQDPHSSQAFHTPSSLLFDPETSPP  
 LSPCPEPPSNSTRLEASQVHVRVSPGQAAPAMARPRRSRHGPASSSS  
 SSEGDSAGPARPSQKRPRCSATAQRVAAWTPGPASNREAATASTRA  
 AYQAAIRGVGSAQSRLGPGPPRGHSHKALAPQAALIPEEELAGDWLELD  
 MPLTRRRRPRRGTGDNRRPSSTSGSDSESRPRARAKQVRLTCMQS  
 CSAPVNAGPSSLASEPPGSPSTPRVSEPSGDSSAAGQPLGPAPPPPIRV  
 RVQVQDHLFLIPVPHSSDTHSVAWLAEQAAQRYQTCLLPRLTLRKEG  
 ALLAPQDLIPDLQSNDEVLAEVTSWDLPPLTDYRACQSLGQGEHQ  
 QVLQAVELQGLGLSFSACSLALDQAQLTPLLRALKLHTALRELRLAGNR  
 LGDKCVAELVAALGTMPSLALLDLSSNHLGPEGLRQLAMGLPGQATLQ  
 SLEELDLSMNPLGDGCGQSLASLLHACPLLSTLRLQACGFGPSFFLSHQ  
 TALGSAFQDAEHLKTLSSYNALGAPALARTLQSLPAGTLLHLELSSVAA  
 GKGDSDLMEPVFRYLAKEGCALAHLTLSANHLGDKAVRDLRCLSLCPS  
 LISLDLSANPEISCASLEELLSTLQKRPQGLSFLGLSGCAVQGPLGLGLW  
 DKIAAQLRELQLCSRRLCAEDRDALRQLQPSRPGPGECTLDHGSKLFF  
 RRL

**Host:** Mouse

**Reactivity:** Human

**Quality Control Testing:** Antibody reactive against mammalian transfected lysate.

**Storage Buffer:** In 1x PBS, pH 7.4

**Storage Instruction:** Store at -20°C or lower. Aliquot to avoid repeated freezing and thawing.

**MSDS:**  [Download](#)

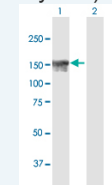
**Datasheet:**  [Download](#)

**Applications**

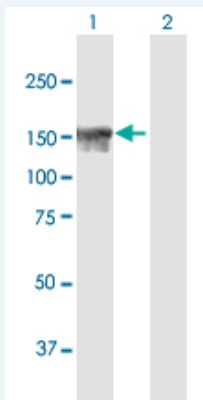
**Western Blot (Transfected lysate)**

**Application Image**

Western Blot (Transfected lysate)



 [enlarge](#)



Western Blot analysis of NFKBIL2 expression in transfected 293T cell line ([H00004796-T02](#)) by NFKBIL2 MaxPab polyclonal antibody.

Lane 1: NFKBIL2 transfected lysate(134.09 KDa).  
Lane 2: Non-transfected lysate.

 [Protocol Download](#)

### Gene Information

**Entrez GeneID:** [4796](#)

**GeneBank Accession#:** [BC008782.2](#)

**Protein Accession#:** [AAH08782.1](#)

**Gene Name:** NFKBIL2

**Gene Alias:** FLJ40087,IKBR

**Gene Description:** nuclear factor of kappa light polypeptide gene enhancer in B-cells inhibitor-like 2

**Omim ID:** [604546](#)

**Gene Ontology:** [Hyperlink](#)

**Gene Summary:** The protein encoded by this gene is thought to be a negative regulator of NF-kappa-B mediated transcription. The encoded protein may bind NF-kappa-B complexes and trap them in the cytoplasm, preventing them from entering the nucleus and interacting with the DNA. Phosphorylation of this protein targets it for degradation by the ubiquitination pathway, which frees the NF-kappa-B complexes to enter the nucleus. [provided by RefSeq]

**Other Designations:** I-kappa-B-related protein,NF-kappa-B inhibitor-like protein 2

### Related Disease

[Coronary Artery Disease](#) [Genetic Predisposition to Disease](#)