



SZABO SCANDIC

Part of Europa Biosite

Produktinformation



Forschungsprodukte & Biochemikalien



Zellkultur & Verbrauchsmaterial



Diagnostik & molekulare Diagnostik



Laborgeräte & Service

Weitere Information auf den folgenden Seiten!
See the following pages for more information!



Lieferung & Zahlungsart

siehe unsere [Liefer- und Versandbedingungen](#)

Zuschläge

- Mindermengenzuschlag
- Trockeneiszuschlag
- Gefahrgutzuschlag
- Expressversand

SZABO-SCANDIC HandelsgmbH

Quellenstraße 110, A-1100 Wien

T. +43(0)1 489 3961-0

F. +43(0)1 489 3961-7

mail@szabo-scandic.com

www.szabo-scandic.com

[linkedin.com/company/szaboscandic](https://www.linkedin.com/company/szaboscandic) 

NHS monoclonal antibody (M05), clone 6D9

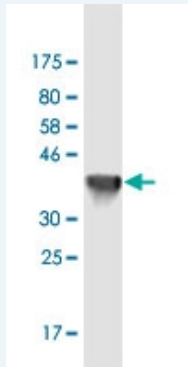
Catalog # : H00004810-M05

規格 : [100 ug]

[List All](#)

Specification

Product Description:	Mouse monoclonal antibody raised against a partial recombinant NHS.
Immunogen:	NHS (NP_938011.1, 1532 a.a. ~ 1629 a.a) partial recombinant protein with GST tag. MW of the GST tag alone is 26 KDa.
Sequence:	TAESPQSTDDAHQGSQGAEALSPLSPCSPRVNAEGFSSKSFATSASAR VGRSRAPPAASSRYSVRCRLYNTPMQAISEGETENSDGSPHDDRSSQ SS
Host:	Mouse
Reactivity:	Human
Isotype:	IgG2a Kappa
Quality Control Testing:	Antibody Reactive Against Recombinant Protein.



Western Blot detection against Immunogen (36.52 KDa) .

Storage Buffer: In 1x PBS, pH 7.4

Storage Instruction: Store at -20°C or lower. Aliquot to avoid repeated freezing and thawing.

Datasheet: [Download](#)

Applications

Western Blot (Recombinant protein)

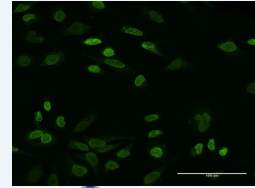
[Protocol Download](#)

Immunofluorescence

Application Image

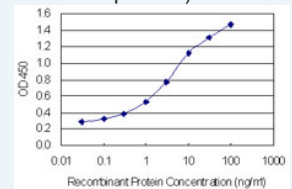
Western Blot (Recombinant protein)

Immunofluorescence



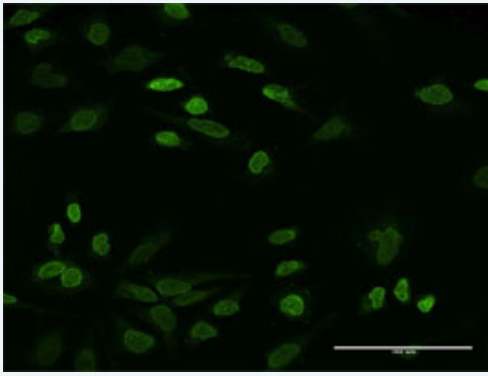
[enlarge](#)

Sandwich ELISA (Recombinant protein)



[enlarge](#)

ELISA

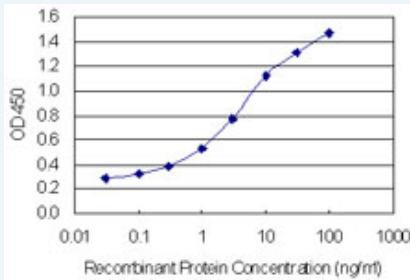


[enlarge this image](#)

Immunofluorescence of monoclonal antibody to NHS on HeLa cell . [antibody concentration 10 ug/ml]

[Protocol Download](#)

Sandwich ELISA (Recombinant protein)



Detection limit for recombinant GST tagged NHS is 0.03 ng/ml as a capture antibody.

[Protocol Download](#)

ELISA

Gene Information

Entrez GeneID: [4810](#)

GeneBank [NM_198270](#)
Accession#:

Protein [NP_938011.1](#)
Accession#:

Gene Name: NHS

Gene Alias: DKFZp781F2016,DKFZp781L0254,SCML1

Gene Description: Nance-Horan syndrome (congenital cataracts and dental anomalies)

Omim ID: [300457](#), [302350](#)

Gene Ontology: [Hyperlink](#)

Gene Summary: This gene encodes a protein containing four conserved nuclear localization signals. The encoded protein may function during the development of the eyes, teeth, and brain. Mutations in this gene have been shown to cause Nance-Horan syndrome. Alternatively spliced transcript variants encoding different isoforms have been described for this gene. [provided by RefSeq]

Other Designations: Nance-Horan syndrome protein,OTTHUMP00000024417

Related Disease

[Cardiovascular Diseases](#) [Diabetes Mellitus, Type 2](#) [Edema](#)

[服務條款](#) | [隱私權政策](#) | [著作及商標](#) | [網站地圖](#)

©2016 亞諾法生技股份有限公司 Abnova Corporation. 版權所有.