



SZABO SCANDIC

Part of Europa Biosite

Produktinformation



Forschungsprodukte & Biochemikalien



Zellkultur & Verbrauchsmaterial



Diagnostik & molekulare Diagnostik



Laborgeräte & Service

Weitere Information auf den folgenden Seiten!
See the following pages for more information!



Lieferung & Zahlungsart

siehe unsere [Liefer- und Versandbedingungen](#)

Zuschläge

- Mindermengenzuschlag
- Trockeneiszuschlag
- Gefahrgutzuschlag
- Expressversand

SZABO-SCANDIC HandelsgmbH

Quellenstraße 110, A-1100 Wien

T. +43(0)1 489 3961-0

F. +43(0)1 489 3961-7

mail@szabo-scandic.com

www.szabo-scandic.com

[linkedin.com/company/szaboscandic](https://www.linkedin.com/company/szaboscandic) 

NINJ2 293T Cell Transient Overexpression Lysate(Denatured)

Catalog # : H00004815-T01

規格 : [100 uL]

[List All](#)

Specification

Transfected Cell Line: 293T

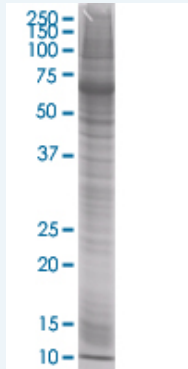
Plasmid: pCMV-NINJ2 full-length

Host: Human

Theoretical MW (kDa): 15.73

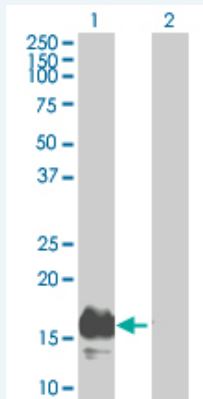
Quality Control Testing: Transient overexpression cell lysate was tested with Anti-NINJ2 antibody (H00004815-B01) by Western Blots.

SDS-PAGE Gel



NINJ2 transfected lysate

Western Blot



Lane 1: NINJ2 transfected lysate (15.73 KDa).

Lane 2: Non-transfected lysate.

Storage Buffer: 1X Sample Buffer (50 mM Tris-HCl, 2% SDS, 10% glycerol, 300 mM 2-mercaptoethanol, 0.01% Bromophenol blue)

Storage Instruction: Store at -80°C. Aliquot to avoid repeated freezing and thawing.

MSDS:  [Download](#)

Applications

Application Image

Western Blot

Western Blot

Gene Information

Entrez GeneID: [4815](#)

GeneBank Accession#: [BC057766](#)

Protein Accession#: [AAH57766](#)

Gene Name: NINJ2

Gene Alias: FLJ56349

Gene Description: ninjurin 2

Omim ID: [607297](#)

Gene Ontology: [Hyperlink](#)

Gene Summary: Cell adhesion molecules mediate cell-to-cell and cell-to-extracellular matrix interactions during development, differentiation, and regeneration of the peripheral nervous system. NINJ2 is upregulated in Schwann cells in the distal nerve segment after peripheral nerve injury and can promote neurite outgrowth.[supplied by OMIM]

Other Designations: -

Related Disease

[Brain Ischemia](#) [Genetic Predisposition to Disease](#) [Stroke](#)