



SZABO SCANDIC

Part of Europa Biosite

Produktinformation



Forschungsprodukte & Biochemikalien



Zellkultur & Verbrauchsmaterial



Diagnostik & molekulare Diagnostik



Laborgeräte & Service

Weitere Information auf den folgenden Seiten!
See the following pages for more information!



Lieferung & Zahlungsart

siehe unsere [Liefer- und Versandbedingungen](#)

Zuschläge

- Mindermengenzuschlag
- Trockeneiszuschlag
- Gefahrgutzuschlag
- Expressversand

SZABO-SCANDIC HandelsgmbH

Quellenstraße 110, A-1100 Wien

T. +43(0)1 489 3961-0

F. +43(0)1 489 3961-7

mail@szabo-scandic.com

www.szabo-scandic.com

[linkedin.com/company/szaboscandic](https://www.linkedin.com/company/szaboscandic) 



NME1 purified MaxPab rabbit polyclonal antibody (D01P) MaxPab®

Catalog # : H00004830-D01P

規格 : [100 ug]

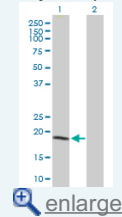
[List All](#)

Specification

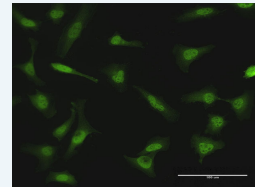
Product Description:	Rabbit polyclonal antibody raised against a full-length human NME1 protein.
Immunogen:	NME1 (ENSP00000337060, 1 a.a. ~ 177 a.a) full-length human protein.
Sequence:	MVLLSTLGMVFQEGEPPISSCDTGTMANCERTFIAIKPDGVQRGLVGEIIK RFEQKGFRLVGLKFMQASEDLLKEHYVDLKDRPFFAGLVKYMHS GPV AMVWEGLNVVKTGRVMLGETNPADSKPGTIRGDFCIQVGRNIIHGSDSV ESAEKEIGLWFHPEELVDYTSACQNWIIYE
Host:	Rabbit
Reactivity:	Human
Quality Control Testing:	Antibody reactive against mammalian transfected lysate.
Storage Buffer:	In 1x PBS, pH 7.4
Storage Instruction:	Store at -20°C or lower. Aliquot to avoid repeated freezing and thawing.
MSDS:	 Download
Datasheet:	 Download

Application Image

Western Blot (Transfected lysate)

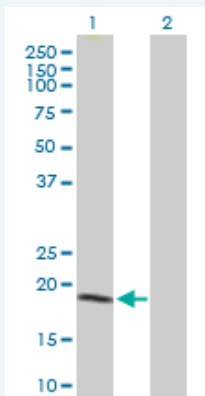


Immunofluorescence



Applications

Western Blot (Transfected lysate)

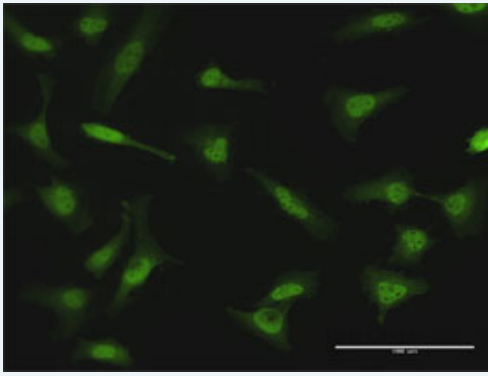


Western Blot analysis of NME1 expression in transfected 293T cell line ([H00004830-T01](#)) by NME1 MaxPab polyclonal antibody.

Lane 1: NME1 transfected lysate(19.70 kDa).
Lane 2: Non-transfected lysate.

 [Protocol Download](#)

Immunofluorescence



[enlarge this image](#)

Immunofluorescence of purified MaxPab antibody to NME1 on HeLa cell. [antibody concentration 10 ug/ml]

[Protocol Download](#)

Gene Information

Entrez GeneID: [4830](#)

GeneBank Accession#: [NM_198175](#)

Protein Accession#: [ENSP00000337060](#)

Gene Name: NME1

Gene Alias: AWD,GAAD,NB,NBS,NDPK-A,NDPKA,NM23,NM23-H1

Gene Description: non-metastatic cells 1, protein (NM23A) expressed in

Omim ID: [156490](#), [256700](#)

Gene Ontology: [Hyperlink](#)

Gene Summary: This gene (NME1) was identified because of its reduced mRNA transcript levels in highly metastatic cells. Nucleoside diphosphate kinase (NDK) exists as a hexamer composed of 'A' (encoded by this gene) and 'B' (encoded by NME2) isoforms. Mutations in this gene have been identified in aggressive neuroblastomas. Two transcript variants encoding different isoforms have been found for this gene. Co-transcription of this gene and the neighboring downstream gene (NME2) generates naturally-occurring transcripts (NME1-NME2), which encodes a fusion protein comprised of sequence sharing identity with each individual gene product. [provided by RefSeq]

Other Designations: NDP kinase A,OTTHUMP00000174772

Gene Pathway

[Metabolic pathways](#) [Purine metabolism](#) [Pyrimidine metabolism](#)

Related Disease

[Breast cancer](#) [Breast Neoplasms](#) [Carcinoma, Non-Small-Cell Lung](#) [Endometrial Neoplasms](#) [Genetic Predisposition to Disease](#) [Lung Neoplasms](#) [Neoplasm Metastasis](#)