



SZABO SCANDIC

Part of Europa Biosite

Produktinformation



Forschungsprodukte & Biochemikalien



Zellkultur & Verbrauchsmaterial



Diagnostik & molekulare Diagnostik



Laborgeräte & Service

Weitere Information auf den folgenden Seiten!
See the following pages for more information!



Lieferung & Zahlungsart

siehe unsere [Liefer- und Versandbedingungen](#)

Zuschläge

- Mindermengenzuschlag
- Trockeneiszuschlag
- Gefahrgutzuschlag
- Expressversand

SZABO-SCANDIC HandelsgmbH

Quellenstraße 110, A-1100 Wien

T. +43(0)1 489 3961-0

F. +43(0)1 489 3961-7

mail@szabo-scandic.com

www.szabo-scandic.com

[linkedin.com/company/szaboscandic](https://www.linkedin.com/company/szaboscandic) 

NME1 monoclonal antibody (M01), clone 2H1

Catalog # : H00004830-M01

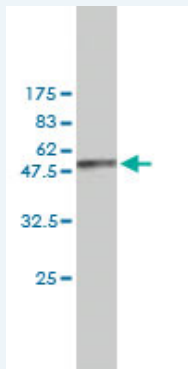
規格 : [100 ug]

[List All](#)

Specification

Product Description:	Mouse monoclonal antibody raised against a full length recombinant NME1.
Immunogen:	NME1 (AAH00293, 1 a.a. ~ 152 a.a) full-length recombinant protein with GST tag. MW of the GST tag alone is 26 KDa.
Sequence:	MANCERTFIAIKPDGVQRGLVGEIIKRFEQKGFRLVGLKFMQASEDLLKE HYVDLKDRPFFAGLVKYMHS GPVVAMVWEGLNVVKTGRVMLGETNPAD SKPGTIRGDFCIQVGRNIIHGSDSVESAEKEIGLWFHPEELVDYTSCAQN WIYE
Host:	Mouse
Reactivity:	Human
Isotype:	IgG1 kappa

Quality Control Testing: Antibody Reactive Against Recombinant Protein.



Western Blot detection against Immunogen (42.46 KDa) .

Storage Buffer: In 1x PBS, pH 7.4

Storage Instruction: Store at -20°C or lower. Aliquot to avoid repeated freezing and thawing.

MSDS: [Download](#)

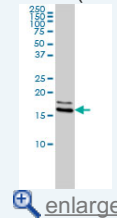
Datasheet: [Download](#)

Applications

Western Blot (Cell lysate)

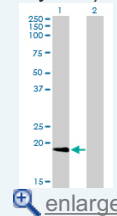
Application Image

Western Blot (Cell lysate)



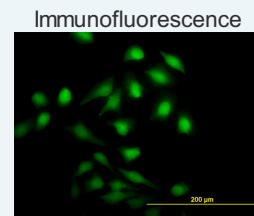
[enlarge](#)

Western Blot (Transfected lysate)



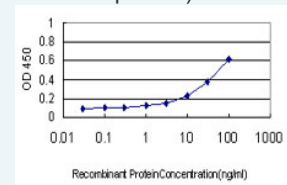
[enlarge](#)

Western Blot (Recombinant protein)



[enlarge](#)

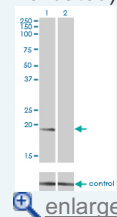
Sandwich ELISA (Recombinant protein)



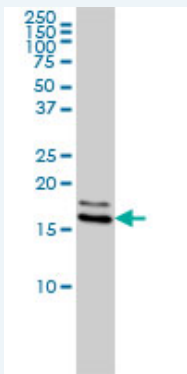
[enlarge](#)

ELISA

RNAi Knockdown (Antibody validated)



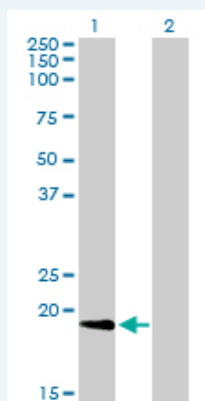
[enlarge](#)



NME1 monoclonal antibody (M01), clone 2H1 Western Blot analysis of NME1 expression in HeLa S3 NE (Cat # L013V3).

[Protocol Download](#)

Western Blot (Transfected lysate)



Western Blot analysis of NME1 expression in transfected 293T cell line by NME1 monoclonal antibody (M01), clone 2H1.

Lane 1: NME1 transfected lysate(19.7 KDa).

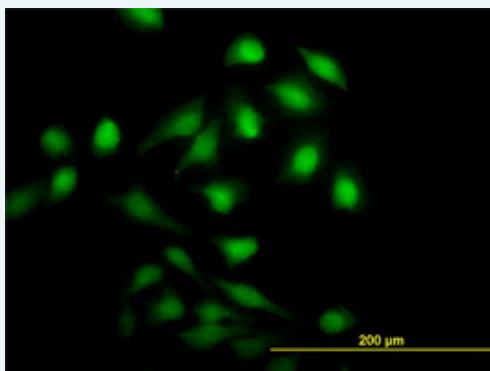
Lane 2: Non-transfected lysate.

[Protocol Download](#)

Western Blot (Recombinant protein)

[Protocol Download](#)

Immunofluorescence

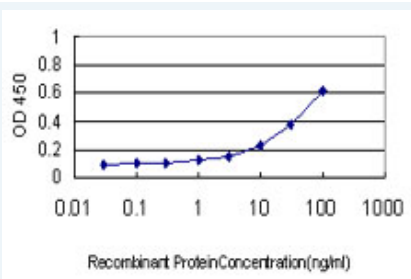


[enlarge this image](#)

Immunofluorescence of monoclonal antibody to NME1 on HeLa cell. [antibody concentration 20 ug/ml]

[Protocol Download](#)

Sandwich ELISA (Recombinant protein)

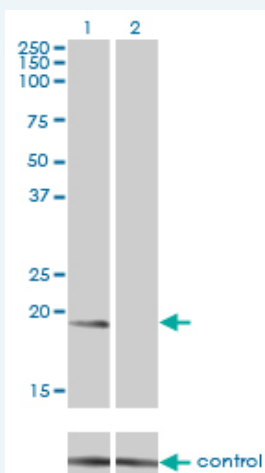


Detection limit for recombinant GST tagged NME1 is approximately 1ng/ml as a capture antibody.

[Protocol Download](#)

ELISA

RNAi Knockdown (Antibody validated)



Western blot analysis of NME1 over-expressed 293 cell line, cotransfected with NME1 Validated Chimera RNAi (Cat # H00004830-R01V) (Lane 2) or non-transfected control (Lane 1). Blot probed with NME1 monoclonal antibody (M01), clone 2H1 (Cat # H00004830-M01). GAPDH (36.1 kDa) used as specificity and loading control.

[Protocol Download](#)

Gene Information

Entrez GeneID: [4830](#)

GeneBank [BC000293](#)

Accession#:

Protein [AAH00293](#)

Accession#:

Gene Name: NME1

Gene Alias: AWD,GAAD,NB,NBS,NDPK-A,NDPKA,NM23,NM23-H1

Gene Description: non-metastatic cells 1, protein (NM23A) expressed in

Omim ID: [156490](#), [256700](#)

Gene Ontology: [Hyperlink](#)

Gene Summary: This gene (NME1) was identified because of its reduced mRNA transcript levels in highly metastatic cells. Nucleoside diphosphate kinase (NDK) exists as a hexamer composed of 'A' (encoded by this gene) and 'B' (encoded by NME2) isoforms. Mutations in this gene have been identified in aggressive neuroblastomas. Two transcript variants encoding different isoforms have been found for this gene. Co-transcription of this gene and the neighboring downstream gene (NME2)

generates naturally-occurring transcripts (NME1-NME2), which encodes a fusion protein comprised of sequence sharing identity with each individual gene product. [provided by RefSeq]

Other Designations: NDP kinase A, OTTHUMP00000174772

Gene Pathway

[Metabolic pathways](#) [Purine metabolism](#) [Pyrimidine metabolism](#)

Related Disease

[Breast cancer](#) [Breast Neoplasms](#) [Carcinoma, Non-Small-Cell Lung](#) [Endometrial Neoplasms](#)
[Genetic Predisposition to Disease](#) [Lung Neoplasms](#) [Neoplasm Metastasis](#)

[服務條款](#) | [隱私權政策](#) | [著作及商標](#) | [網站地圖](#)

©2016 亞諾法生技股份有限公司 Abnova Corporation. 版權所有.