



SZABO SCANDIC

Part of Europa Biosite

Produktinformation



Forschungsprodukte & Biochemikalien



Zellkultur & Verbrauchsmaterial



Diagnostik & molekulare Diagnostik



Laborgeräte & Service

Weitere Information auf den folgenden Seiten!
See the following pages for more information!



Lieferung & Zahlungsart

siehe unsere [Liefer- und Versandbedingungen](#)

Zuschläge

- Mindermengenzuschlag
- Trockeneiszuschlag
- Gefahrgutzuschlag
- Expressversand

SZABO-SCANDIC HandelsgmbH

Quellenstraße 110, A-1100 Wien

T. +43(0)1 489 3961-0

F. +43(0)1 489 3961-7

mail@szabo-scandic.com

www.szabo-scandic.com

[linkedin.com/company/szaboscandic](https://www.linkedin.com/company/szaboscandic) 

NME2 monoclonal antibody (M12), clone 4A7

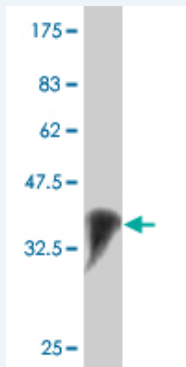
Catalog # : H00004831-M12

規格 : [100 ug]

[List All](#)

Specification

Product Description:	Mouse monoclonal antibody raised against a full length recombinant NME2.
Immunogen:	NME2 (AAH02476, 1 a.a. ~ 152 a.a) full-length recombinant protein with GST tag. MW of the GST tag alone is 26 KDa.
Sequence:	MANLERTFIAIKPDGVQRGLVGEIIRFEQKGFRLVAMKFLRASEEHLKQ HYIDLKDRPFFPGLVKYMNSGPVWAMWVEGLNVVKTGRVMLGETNPAD SKPGTIRGDFCIQVGRNIIHGSDSVKSAEKEISLWFKPEELVDYKSCAHDW VYE
Host:	Mouse
Reactivity:	Human
Isotype:	IgG2b Kappa
Quality Control Testing:	Antibody Reactive Against Recombinant Protein.



Western Blot detection against Immunogen (42.46 KDa) .

Storage Buffer: In 1x PBS, pH 7.4

Storage Instruction: Store at -20°C or lower. Aliquot to avoid repeated freezing and thawing.

MSDS: [Download](#)

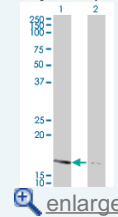
Datasheet: [Download](#)

Applications

Western Blot (Transfected lysate)

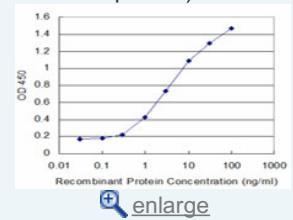
Application Image

Western Blot (Transfected lysate)

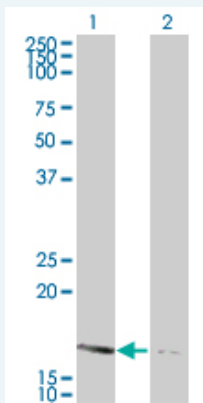


Western Blot (Recombinant protein)

Sandwich ELISA (Recombinant protein)



ELISA



Western Blot analysis of NME2 expression in transfected 293T cell line by NME2 monoclonal antibody (M12), clone 4A7.

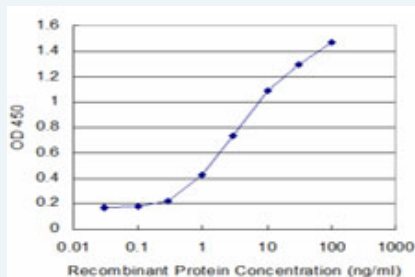
Lane 1: NME2 transfected lysate(17.298 KDa).
Lane 2: Non-transfected lysate.

[Protocol Download](#)

Western Blot (Recombinant protein)

[Protocol Download](#)

Sandwich ELISA (Recombinant protein)



Detection limit for recombinant GST tagged NME2 is approximately 0.3ng/ml as a capture antibody.

[Protocol Download](#)

ELISA

Gene Information

Entrez GeneID: [4831](#)

GeneBank [BC002476](#)
Accession#:

Protein [AAH02476](#)
Accession#:

Gene Name: NME2

Gene Alias: MGC111212,NDPK-B,NDPKB,NM23-H2,NM23B,puf

Gene Description: non-metastatic cells 2, protein (NM23B) expressed in

Omim ID: [156491](#)

Gene Ontology: [Hyperlink](#)

Gene Summary: Nucleoside diphosphate kinase (NDK) exists as a hexamer composed of 'A' (encoded by NME1) and 'B' (encoded by this gene) isoforms. Multiple alternatively spliced transcript variants encoding the same isoform have been found for this gene. Co-transcription of this gene and the neighboring upstream gene (NME1) generates naturally-occurring

transcripts (NME1-NME2) which encode a fusion protein comprised of sequence sharing identity with each individual gene product. [provided by RefSeq]

Other NDP kinase
Designations: B,OTTHUMP00000174727,OTTHUMP00000174728,OTTHUMP00000174774,OTTHUMP00000174775,OTTHUMP00000174776,c-myc transcription factor,non-metastatic cells 2, protein (NM23) expressed in

Gene Pathway

[Metabolic pathways](#) [Purine metabolism](#) [Pyrimidine metabolism](#)

[服務條款](#) | [隱私權政策](#) | [著作及商標](#) | [網站地圖](#)

©2016 亞諾法生技股份有限公司 Abnova Corporation. 版權所有.