



SZABO SCANDIC

Part of Europa Biosite

Produktinformation



Forschungsprodukte & Biochemikalien



Zellkultur & Verbrauchsmaterial



Diagnostik & molekulare Diagnostik



Laborgeräte & Service

Weitere Information auf den folgenden Seiten!
See the following pages for more information!



Lieferung & Zahlungsart

siehe unsere [Liefer- und Versandbedingungen](#)

Zuschläge

- Mindermengenzuschlag
- Trockeneiszuschlag
- Gefahrgutzuschlag
- Expressversand

SZABO-SCANDIC HandelsgmbH

Quellenstraße 110, A-1100 Wien

T. +43(0)1 489 3961-0

F. +43(0)1 489 3961-7

mail@szabo-scandic.com

www.szabo-scandic.com

[linkedin.com/company/szaboscandic](https://www.linkedin.com/company/szaboscandic) 

NME3 monoclonal antibody (M13), clone 3G10

Catalog # : H00004832-M13

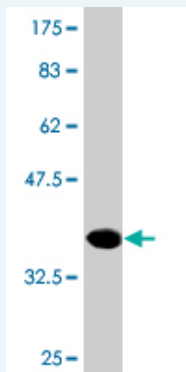
規格 : [100 ug]

[List All](#)

Specification

Product Description:	Mouse monoclonal antibody raised against a partial recombinant NME3.
Immunogen:	NME3 (NP_002504.2, 73 a.a. ~ 169 a.a) partial recombinant protein with GST tag. MW of the GST tag alone is 26 KDa.
Sequence:	RERPFYGRLLVKYMASGPVAMVWQGLDVRTSRALIGATNPADAPPGTIRGDFCIEVGKNIHGSDSVESARREIALWFRADELLCWEDSAGHWLYE
Host:	Mouse
Reactivity:	Human
Isotype:	IgG2a Kappa

Quality Control Testing: Antibody Reactive Against Recombinant Protein.



Western Blot detection against Immunogen (36.41 KDa) .

Storage Buffer: In 1x PBS, pH 7.4

Storage Instruction: Store at -20°C or lower. Aliquot to avoid repeated freezing and thawing.

MSDS: [Download](#)

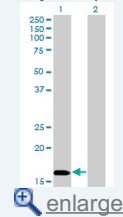
Datasheet: [Download](#)

Applications

Western Blot (Transfected lysate)

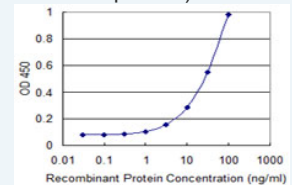
Application Image

Western Blot (Transfected lysate)

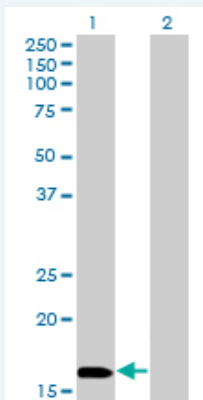


Western Blot (Recombinant protein)

Sandwich ELISA (Recombinant protein)



ELISA



Western Blot analysis of NME3 expression in transfected 293T cell line by NME3 monoclonal antibody (M13), clone 3G10.

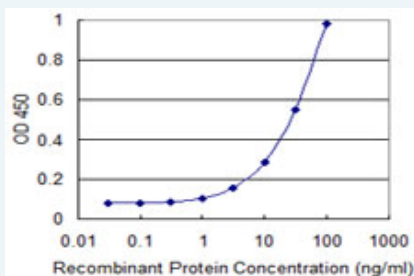
Lane 1: NME3 transfected lysate(19 KDa).
Lane 2: Non-transfected lysate.

[Protocol Download](#)

Western Blot (Recombinant protein)

[Protocol Download](#)

Sandwich ELISA (Recombinant protein)



Detection limit for recombinant GST tagged NME3 is 0.3 ng/ml as a capture antibody.

[Protocol Download](#)

ELISA

Gene Information

Entrez GeneID: [4832](#)

GeneBank [NM_002513](#)

Accession#:

Protein [NP_002504.2](#)

Accession#:

Gene Name: NME3

Gene Alias: DR-nm23,KIAA0516,NDPK-C,NDPKC,NM23-H3,c371H6.2

Gene Description: non-metastatic cells 3, protein expressed in

Omim ID: [601817](#)

Gene Ontology: [Hyperlink](#)

Other Designations: NDP kinase C,nucleoside-diphosphate kinase 3

Gene Pathway

[Metabolic pathways](#) [Purine metabolism](#) [Pyrimidine metabolism](#)

[服務條款](#) | [隱私權政策](#) | [著作及商標](#) | [網站地圖](#)

©2016 亞諾法生技股份有限公司 Abnova Corporation. 版權所有.