



SZABO SCANDIC

Part of Europa Biosite

Produktinformation



Forschungsprodukte & Biochemikalien



Zellkultur & Verbrauchsmaterial



Diagnostik & molekulare Diagnostik



Laborgeräte & Service

Weitere Information auf den folgenden Seiten!
See the following pages for more information!



Lieferung & Zahlungsart

siehe unsere [Liefer- und Versandbedingungen](#)

Zuschläge

- Mindermengenzuschlag
- Trockeneiszuschlag
- Gefahrgutzuschlag
- Expressversand

SZABO-SCANDIC HandelsgmbH

Quellenstraße 110, A-1100 Wien

T. +43(0)1 489 3961-0

F. +43(0)1 489 3961-7

mail@szabo-scandic.com

www.szabo-scandic.com

[linkedin.com/company/szaboscandic](https://www.linkedin.com/company/szaboscandic)

NODAL monoclonal antibody (M02), clone 4F6

Catalog # : H00004838-M02

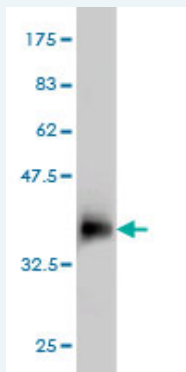
規格 : [100 ug]

[List All](#)

Specification

Product Description:	Mouse monoclonal antibody raised against a partial recombinant NODAL.
Immunogen:	NODAL (NP_060525, 275 a.a. ~ 346 a.a) partial recombinant protein with GST tag. MW of the GST tag alone is 26 KDa.
Sequence:	RCEGECPNPVGEEFHPTNHAYIQSLLKRYQPHRVPSTCCAPVTKPLSM LYVDNGRVLLDHHKDMIVEECGC
Host:	Mouse
Reactivity:	Human
Isotype:	IgG2a Kappa

Quality Control Testing: Antibody Reactive Against Recombinant Protein.



Western Blot detection against Immunogen (33.66 KDa) .

Storage Buffer: In 1x PBS, pH 7.4

Storage Instruction: Store at -20°C or lower. Aliquot to avoid repeated freezing and thawing.

MSDS: [Download](#)

Datasheet: [Download](#)

Applications

Western Blot (Recombinant protein)

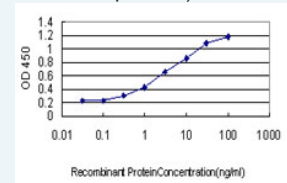
[Protocol Download](#)

Sandwich ELISA (Recombinant protein)

Application Image

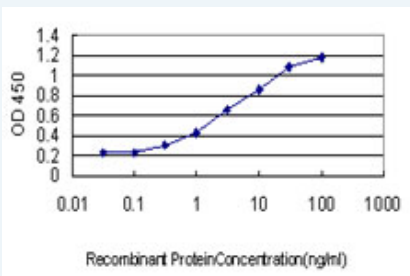
Western Blot (Recombinant protein)

Sandwich ELISA (Recombinant protein)



[enlarge](#)

ELISA



Detection limit for recombinant GST tagged NODAL is approximately 0.03ng/ml as a capture antibody.

 [Protocol Download](#)

ELISA

Gene Information

Entrez GeneID: [4838](#)

GeneBank [NM_018055](#)

Accession#:

Protein [NP_060525](#)

Accession#:

Gene Name: NODAL

Gene Alias: MGC138230

Gene Description: nodal homolog (mouse)

Omim ID: [601265](#)

Gene Ontology: [Hyperlink](#)

Gene Summary: The protein encoded by this gene is a member of the TGF-beta superfamily. Studies of the mouse counterpart suggested that this gene may be essential for mesoderm formation and subsequent organization of axial structures in early embryonic development. [provided by RefSeq]

Other Designations: OTTHUMP00000019754,nodal,nodal, mouse, homolog

Gene Pathway

[TGF-beta signaling pathway](#)

Related Disease

[Alzheimer Disease](#) [Cardiovascular Abnormalities](#) [Cardiovascular Diseases](#)
[Diabetes Mellitus, Type 2](#) [Edema](#) [Genetic Predisposition to Disease](#)
[Head and Neck Neoplasms](#) [Neoplasm Recurrence, Local](#) [Neoplasms, Second Primary](#)
[Obesity](#) [Ovarian Failure, Premature](#) [Polycystic Ovary Syndrome](#) [Puberty, Delayed](#)
[Puberty, Precocious](#) [Thrombophilia](#) [Tobacco Use Disorder](#)