



SZABO SCANDIC

Part of Europa Biosite

Produktinformation



Forschungsprodukte & Biochemikalien



Zellkultur & Verbrauchsmaterial



Diagnostik & molekulare Diagnostik



Laborgeräte & Service

Weitere Information auf den folgenden Seiten!
See the following pages for more information!



Lieferung & Zahlungsart

siehe unsere [Liefer- und Versandbedingungen](#)

Zuschläge

- Mindermengenzuschlag
- Trockeneiszuschlag
- Gefahrgutzuschlag
- Expressversand

SZABO-SCANDIC HandelsgmbH

Quellenstraße 110, A-1100 Wien

T. +43(0)1 489 3961-0

F. +43(0)1 489 3961-7

mail@szabo-scandic.com

www.szabo-scandic.com

[linkedin.com/company/szaboscandic](https://www.linkedin.com/company/szaboscandic) 

NODAL monoclonal antibody (M03), clone 5C3

Catalog # : H00004838-M03

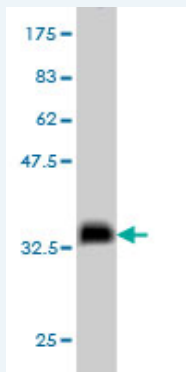
規格 : [100 ug]

[List All](#)

Specification

Product Description:	Mouse monoclonal antibody raised against a partial recombinant NODAL.
Immunogen:	NODAL (NP_060525, 275 a.a. ~ 346 a.a) partial recombinant protein with GST tag. MW of the GST tag alone is 26 KDa.
Sequence:	RCEGECPNPVGEEFHPTNHAYIQSLLKRYQPHRVPSTCCAPVTKPLSM LYVDNGRVLLDHHKDMIVEECGC
Host:	Mouse
Reactivity:	Human, Mouse, Rat
Isotype:	IgG1 Kappa

Quality Control Testing: Antibody Reactive Against Recombinant Protein.



Western Blot detection against Immunogen (33.66 KDa) .

Storage Buffer: In 1x PBS, pH 7.4

Storage Instruction: Store at -20°C or lower. Aliquot to avoid repeated freezing and thawing.

MSDS: [Download](#)

Datasheet: [Download](#)

Publication Reference

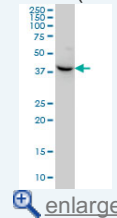
1. [Reactivation of embryonic nodal signaling is associated with tumor progression and promotes the growth of prostate cancer cells.](#)
Lawrence MG, Margaryan NV, Loessner D, Collins A, Kerr KM, Turner M, Seftor EA, Stephens CR, Lai J, Postovit LM, Clements JA, Hendrix MJ; APC BioResource.Prostate. 2011 Jan 12. [Epub ahead of print]

Applications

Western Blot (Cell lysate)

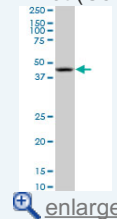
Application Image

Western Blot (Cell lysate)



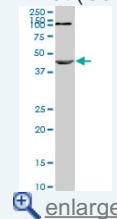
[enlarge](#)

Western Blot (Cell lysate)



[enlarge](#)

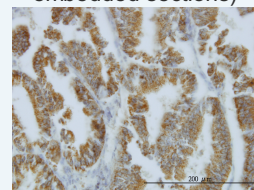
Western Blot (Cell lysate)



[enlarge](#)

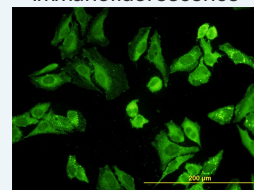
Western Blot (Recombinant protein)

Immunohistochemistry (Formalin/PFA-fixed paraffin-embedded sections)



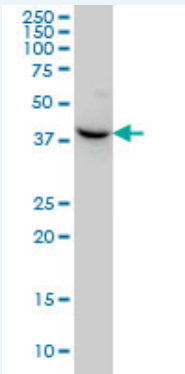
[enlarge](#)

Immunofluorescence



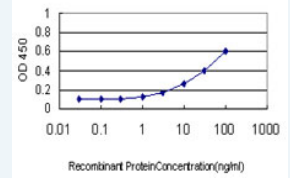
[enlarge](#)


Sandwich ELISA (Recombinant protein)



NODAL monoclonal antibody (M03), clone 5C3 Western Blot analysis of NODAL expression in HeLa (Cat # L013V1).

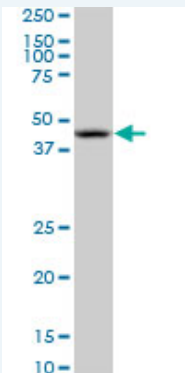
 [Protocol Download](#)



 [enlarge](#)

ELISA

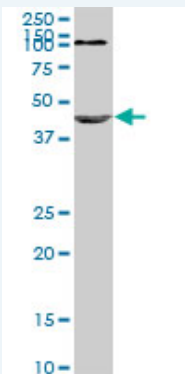
Western Blot (Cell lysate)



NODAL monoclonal antibody (M03), clone 5C3. Western Blot analysis of NODAL expression in PC-12 (Cat # L012V1).

 [Protocol Download](#)

Western Blot (Cell lysate)



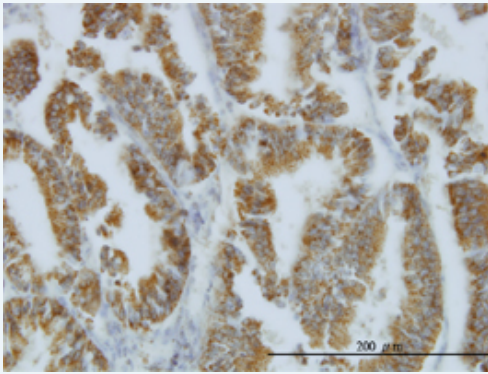
NODAL monoclonal antibody (M03), clone 5C3. Western Blot analysis of NODAL expression in Raw 264.7 (Cat # L024V1).

 [Protocol Download](#)

Western Blot (Recombinant protein)

 [Protocol Download](#)

Immunohistochemistry (Formalin/PFA-fixed paraffin-embedded sections)

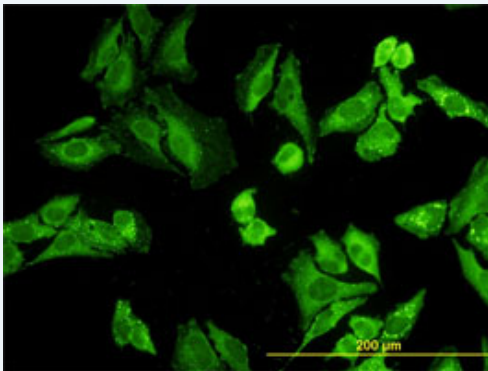


[enlarge this image](#)

Immunoperoxidase of monoclonal antibody to NODAL on formalin-fixed paraffin-embedded human endometrium cancer. [antibody concentration 3 ug/ml]

[Protocol Download](#)

Immunofluorescence

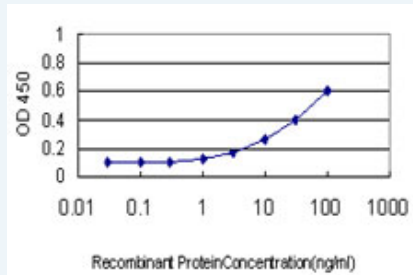


[enlarge this image](#)

Immunofluorescence of monoclonal antibody to NODAL on HeLa cell. [antibody concentration 10 ug/ml]

[Protocol Download](#)

Sandwich ELISA (Recombinant protein)



Detection limit for recombinant GST tagged NODAL is approximately 0.3ng/ml as a capture antibody.

[Protocol Download](#)

ELISA

Gene Information

Entrez GeneID: [4838](#)

GeneBank Accession#: [NM_018055](#)

Protein Accession#: [NP_060525](#)

Gene Name: NODAL

Gene Alias: MGC138230

Gene Description: nodal homolog (mouse)

Omim ID: [601265](#)

Gene Ontology: [Hyperlink](#)

Gene Summary: The protein encoded by this gene is a member of the TGF-beta superfamily. Studies of the mouse counterpart suggested that this gene may be essential for mesoderm formation and subsequent organization of axial structures in early embryonic development. [provided by RefSeq]

Other Designations: OTTHUMP00000019754,nodal,nodal, mouse, homolog

Gene Pathway

[TGF-beta signaling pathway](#)

Related Disease

[Alzheimer Disease](#) [Cardiovascular Abnormalities](#) [Cardiovascular Diseases](#)
[Diabetes Mellitus, Type 2](#) [Edema](#) [Genetic Predisposition to Disease](#)
[Head and Neck Neoplasms](#) [Neoplasm Recurrence, Local](#) [Neoplasms, Second Primary](#)
[Obesity](#) [Ovarian Failure, Premature](#) [Polycystic Ovary Syndrome](#) [Puberty, Delayed](#)
[Puberty, Precocious](#) [Thrombophilia](#) [Tobacco Use Disorder](#)

[服務條款](#) | [隱私權政策](#) | [著作及商標](#) | [網站地圖](#)

©2016 亞諾法生技股份有限公司 Abnova Corporation. 版權所有.