



# SZABO SCANDIC

Part of Europa Biosite

## Produktinformation



Forschungsprodukte & Biochemikalien



Zellkultur & Verbrauchsmaterial



Diagnostik & molekulare Diagnostik



Laborgeräte & Service

Weitere Information auf den folgenden Seiten!  
See the following pages for more information!



### Lieferung & Zahlungsart

siehe unsere [Liefer- und Versandbedingungen](#)

### Zuschläge

- Mindermengenzuschlag
- Trockeneiszuschlag
- Gefahrgutzuschlag
- Expressversand

### SZABO-SCANDIC HandelsgmbH

Quellenstraße 110, A-1100 Wien

T. +43(0)1 489 3961-0

F. +43(0)1 489 3961-7

[mail@szabo-scandic.com](mailto:mail@szabo-scandic.com)

[www.szabo-scandic.com](http://www.szabo-scandic.com)

[linkedin.com/company/szaboscandic](https://www.linkedin.com/company/szaboscandic) 



## NOTCH1 monoclonal antibody (M10), clone 4G1

Catalog # : H00004851-M10

規格 : [ 100 ug ]

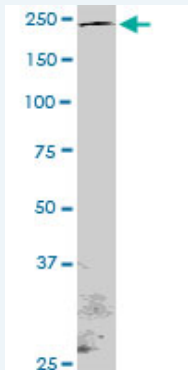
[List All](#)

### Specification

<b>Product Description:</b>	Mouse monoclonal antibody raised against a partial recombinant NOTCH1.
<b>Immunogen:</b>	NOTCH1 (NP_060087, 23 a.a. ~ 132 a.a) partial recombinant protein with GST tag. MW of the GST tag alone is 26 KDa.
<b>Sequence:</b>	RCSQPGETCLNGGKCEAANGTEACVCGGAFVGPQCQDPNPCLSTPCK NAGTCHVDDRGGVADYACSCALGFSGPLCLTPLDNACLTNPCRNGGTC DLLTLTEYKCRCPGG
<b>Host:</b>	Mouse
<b>Reactivity:</b>	Human, Mouse
<b>Isotype:</b>	IgG1 Kappa
<b>Quality Control Testing:</b>	Antibody Reactive Against Recombinant Protein.
<b>Storage Buffer:</b>	In 1x PBS, pH 7.4
<b>Storage Instruction:</b>	Store at -20°C or lower. Aliquot to avoid repeated freezing and thawing.
<b>MSDS:</b>	 <a href="#">Download</a>
<b>Datasheet:</b>	 <a href="#">Download</a>

### Applications

#### Western Blot (Cell lysate)



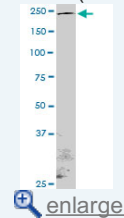
NOTCH1 monoclonal antibody (M10), clone 4G1. Western Blot analysis of NOTCH1 expression in Raw 264.7 (Cat # L024V1 ).

 [Protocol Download](#)

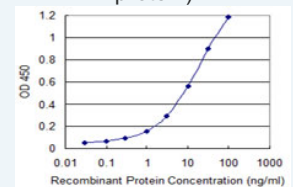
#### Sandwich ELISA (Recombinant protein)

### Application Image

#### Western Blot (Cell lysate)

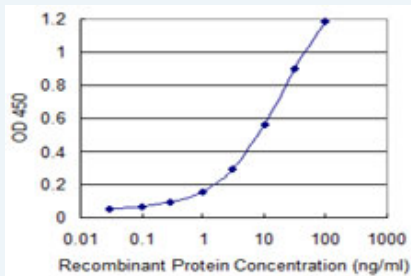


#### Sandwich ELISA (Recombinant protein)



[enlarge](#)

ELISA



Detection limit for recombinant GST tagged NOTCH1 is 0.1 ng/ml as a capture antibody.

 [Protocol Download](#)

## ELISA

### Gene Information

**Entrez GeneID:** [4851](#)

**GeneBank** [NM\\_017617](#)

**Accession#:**

**Protein** [NP\\_060087](#)

**Accession#:**

**Gene Name:** NOTCH1

**Gene Alias:** TAN1,hN1

**Gene Description:** Notch homolog 1, translocation-associated (Drosophila)

**Omim ID:** [109730](#), [190198](#)

**Gene Ontology:** [Hyperlink](#)

**Gene Summary:** This gene encodes a member of the Notch family. Members of this Type 1 transmembrane protein family share structural characteristics including an extracellular domain consisting of multiple epidermal growth factor-like (EGF) repeats, and an intracellular domain consisting of multiple, different domain types. Notch family members play a role in a variety of developmental processes by controlling cell fate decisions. The Notch signaling network is an evolutionarily conserved intercellular signaling pathway which regulates interactions between physically adjacent cells. In Drosophila, notch interaction with its cell-bound ligands (delta, serrate) establishes an intercellular signaling pathway that plays a key role in development. Homologues of the notch-ligands have also been identified in human, but precise interactions between these ligands and the human notch homologues remain to be determined. This protein is cleaved in the trans-Golgi network, and presented on the cell surface as a heterodimer. This protein functions as a receptor for membrane bound ligands, and may play multiple roles during development. [provided by RefSeq]

**Other Designations:** OTTHUMP00000022594,neurogenic locus notch homolog protein 1,notch1,translocation-associated notch protein TAN-1

### Gene Pathway

[Dorso-ventral axis formation](#) [Notch signaling pathway](#) [Prion diseases](#)

### Related Disease

[Alzheimer disease](#) [Birth Weight](#) [Diabetes Mellitus, Type 2](#)  
[Genetic Predisposition to Disease](#) [Head and Neck Neoplasms](#) [Kidney Failure, Chronic](#)  
[Leukemia, Myeloid, Acute](#) [Leukemia, T-Cell, Acute](#) [Lymphoma, T-Cell](#) [Multiple Myeloma](#)  
[Neoplasm Recurrence, Local](#) [Neoplasms, Second Primary](#) [Pancreatic cancer](#)  
[Pancreatic Neoplasms](#) [Precursor T-Cell Lymphoblastic Leukemia-Lymphoma](#)

