



# SZABO SCANDIC

Part of Europa Biosite

## Produktinformation



Forschungsprodukte & Biochemikalien



Zellkultur & Verbrauchsmaterial



Diagnostik & molekulare Diagnostik



Laborgeräte & Service

Weitere Information auf den folgenden Seiten!  
See the following pages for more information!



### Lieferung & Zahlungsart

siehe unsere [Liefer- und Versandbedingungen](#)

### Zuschläge

- Mindermengenzuschlag
- Trockeneiszuschlag
- Gefahrgutzuschlag
- Expressversand

### SZABO-SCANDIC HandelsgmbH

Quellenstraße 110, A-1100 Wien

T. +43(0)1 489 3961-0

F. +43(0)1 489 3961-7

[mail@szabo-scandic.com](mailto:mail@szabo-scandic.com)

[www.szabo-scandic.com](http://www.szabo-scandic.com)

[linkedin.com/company/szaboscandic](https://www.linkedin.com/company/szaboscandic) 

## NPY monoclonal antibody (M01), clone 3B5

Catalog # : H00004852-M01

規格 : [ 100 ug ]

[List All](#)

### Specification

**Product Description:** Mouse monoclonal antibody raised against a partial recombinant NPY.

**Immunogen:** NPY (AAH29497, 29 a.a. ~ 97 a.a) partial recombinant protein with GST tag. MW of the GST tag alone is 26 KDa.

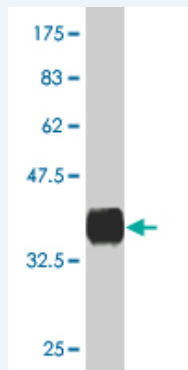
**Sequence:** YPSKPDNPGEDAPAEDMARYYSALRHYINLITRQRYGKRSSPETLISDLL  
MRESTENVPRTRELEDPAMW

**Host:** Mouse

**Reactivity:** Human

**Isotype:** IgG1 Kappa

**Quality Control Testing:** Antibody Reactive Against Recombinant Protein.



Western Blot detection against Immunogen (33.33 KDa) .

**Storage Buffer:** In 1x PBS, pH 7.4

**Storage Instruction:** Store at -20°C or lower. Aliquot to avoid repeated freezing and thawing.

**MSDS:** [Download](#)

**Datasheet:** [Download](#)

### Publication Reference

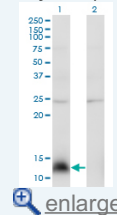
- [Ontogenic development of nerve fibers in human fetal livers: an immunohistochemical study using neural cell adhesion molecule \(NCAM\) and neuron-specific enolase \(NSE\).](#) Terada THistochem Cell Biol. 2014 Oct 18.
- [Neuropeptide Y influences acute food intake and energy status affects NPY immunoreactivity in the female musk shrew \(Suncus murinus\).](#) Bojkowska K, Hamczyk MM, Tsai HW, Riggan A, Rissman EF.Horm Behav. 2008 Feb;53(2):342-50. Epub 2007 Nov 17.

### Applications

Western Blot (Transfected lysate)

### Application Image

Western Blot (Transfected lysate)

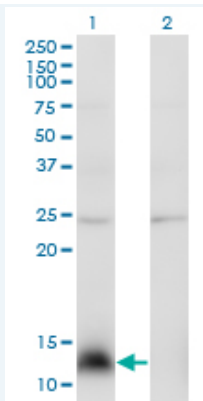


[enlarge](#)

Western Blot (Recombinant protein)

Sandwich ELISA (Recombinant protein)

ELISA



Western Blot analysis of NPY expression in transfected 293T cell line by NPY monoclonal antibody (M01), clone 3B5.

Lane 1: NPY transfected lysate(10.9 KDa).

Lane 2: Non-transfected lysate.


 [Protocol Download](#)

### Western Blot (Recombinant protein)

 [Protocol Download](#)

### Sandwich ELISA (Recombinant protein)

Detection limit for recombinant GST tagged NPY is approximately 0.03ng/ml as a capture antibody.

 [Protocol Download](#)

### ELISA

### Gene Information

Entrez GeneID: [4852](#)

GeneBank [BC029497](#)

Accession#:

Protein [AAH29497](#)

Accession#:

Gene Name: NPY

Gene Alias: PYY4

Gene neuropeptide Y

Description:

Omim ID: [162640](#)

Gene Ontology: [Hyperlink](#)

Other -

Designations:

### Gene Pathway

[Adipocytokine signaling pathway](#) [Neuroactive ligand-receptor interaction](#)

### Related Disease

[Adenocarcinoma](#) [Alcohol Withdrawal Delirium](#) [Alcoholism](#) [Alzheimer Disease](#)  
[Alzheimer disease](#) [Anorexia Nervosa](#) [Anxiety Disorders](#) [Appetite](#) [Arteriosclerosis](#)  
[Atherosclerosis](#) [Attention Deficit Disorder with Hyperactivity](#) [Autistic Disorder](#) [Birth Weight](#)  
[Body Weight](#) [Brain Ischemia](#) [Bulimia](#) [Cardiovascular Diseases](#) [Carotid Artery Diseases](#)  
[Celiac Disease](#)

... see more

[服務條款](#) | [隱私權政策](#) | [著作及商標](#) | [網站地圖](#)

©2016 亞諾法生技股份有限公司 Abnova Corporation. 版權所有.