



SZABO SCANDIC

Part of Europa Biosite

Produktinformation



Forschungsprodukte & Biochemikalien



Zellkultur & Verbrauchsmaterial



Diagnostik & molekulare Diagnostik



Laborgeräte & Service

Weitere Information auf den folgenden Seiten!
See the following pages for more information!



Lieferung & Zahlungsart

siehe unsere [Liefer- und Versandbedingungen](#)

Zuschläge

- Mindermengenzuschlag
- Trockeneiszuschlag
- Gefahrgutzuschlag
- Expressversand

SZABO-SCANDIC HandelsgmbH

Quellenstraße 110, A-1100 Wien

T. +43(0)1 489 3961-0

F. +43(0)1 489 3961-7

mail@szabo-scandic.com

www.szabo-scandic.com

[linkedin.com/company/szaboscandic](https://www.linkedin.com/company/szaboscandic) 

NPY monoclonal antibody (M02), clone 2C10

Catalog # : H00004852-M02

規格 : [100 ug]

List All

Specification

Product Description: Mouse monoclonal antibody raised against a partial recombinant NPY.

Immunogen: NPY (AAH29497, 29 a.a. ~ 97 a.a) partial recombinant protein with GST tag. MW of the GST tag alone is 26 KDa.

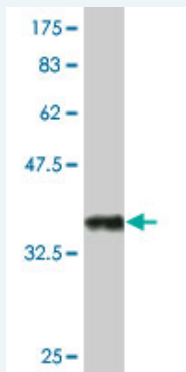
Sequence: YPSKPDNPGEDAPAEDMARYYSALRHYINLITRQRYGKRSSPETLISDLL
MRESTENVPRTRELEDPAMW

Host: Mouse

Reactivity: Human

Isotype: IgG1 Kappa

Quality Control Testing: Antibody Reactive Against Recombinant Protein.



Western Blot detection against Immunogen (33.33 KDa) .

Storage Buffer: In 1x PBS, pH 7.4

Storage Instruction: Store at -20°C or lower. Aliquot to avoid repeated freezing and thawing.

MSDS: [Download](#)

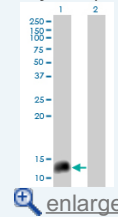
Datasheet: [Download](#)

Applications

Western Blot (Transfected lysate)

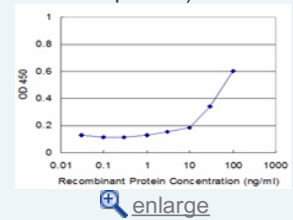
Application Image

Western Blot (Transfected lysate)

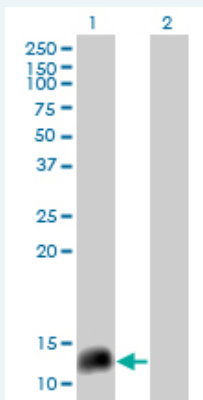


Western Blot (Recombinant protein)

Sandwich ELISA (Recombinant protein)



ELISA



Western Blot analysis of NPY expression in transfected 293T cell line by NPY monoclonal antibody (M02), clone 2C10.

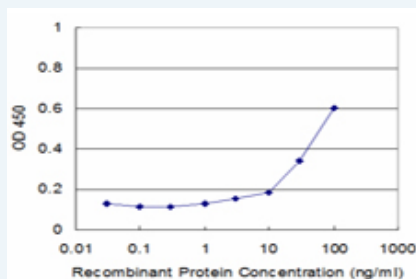
Lane 1: NPY transfected lysate(10.9 KDa).
Lane 2: Non-transfected lysate.

[Protocol Download](#)

Western Blot (Recombinant protein)

[Protocol Download](#)

Sandwich ELISA (Recombinant protein)



Detection limit for recombinant GST tagged NPY is approximately 3ng/ml as a capture antibody.

[Protocol Download](#)

ELISA

Gene Information

Entrez GeneID: [4852](#)

GeneBank [BC029497](#)
Accession#:

Protein [AAH29497](#)
Accession#:

Gene Name: NPY

Gene Alias: PYY4

Gene [neuropeptide Y](#)
Description:

Omim ID: [162640](#)

Gene Ontology: [Hyperlink](#)

Other [-](#)
Designations:

Gene Pathway

[Adipocytokine signaling pathway](#) [Neuroactive ligand-receptor interaction](#)

Related Disease

[Adenocarcinoma](#) [Alcohol Withdrawal Delirium](#) [Alcoholism](#) [Alzheimer Disease](#)
[Alzheimer disease](#) [Anorexia Nervosa](#) [Anxiety Disorders](#) [Appetite](#) [Arteriosclerosis](#)
[Atherosclerosis](#) [Attention Deficit Disorder with Hyperactivity](#) [Autistic Disorder](#) [Birth Weight](#)
[Body Weight](#) [Brain Ischemia](#) [Bulimia](#) [Cardiovascular Diseases](#) [Carotid Artery Diseases](#)
[Celiac Disease](#)

... see more

[服務條款](#) | [隱私權政策](#) | [著作及商標](#) | [網站地圖](#)

©2016 亞諾法生技股份有限公司 Abnova Corporation. 版權所有.