



SZABO SCANDIC

Part of Europa Biosite

Produktinformation



Forschungsprodukte & Biochemikalien



Zellkultur & Verbrauchsmaterial



Diagnostik & molekulare Diagnostik



Laborgeräte & Service

Weitere Information auf den folgenden Seiten!
See the following pages for more information!



Lieferung & Zahlungsart

siehe unsere [Liefer- und Versandbedingungen](#)

Zuschläge

- Mindermengenzuschlag
- Trockeneiszuschlag
- Gefahrgutzuschlag
- Expressversand

SZABO-SCANDIC HandelsgmbH

Quellenstraße 110, A-1100 Wien

T. +43(0)1 489 3961-0

F. +43(0)1 489 3961-7

mail@szabo-scandic.com

www.szabo-scandic.com

[linkedin.com/company/szaboscandic](https://www.linkedin.com/company/szaboscandic) 

NPY monoclonal antibody (M03), clone 3F11

Catalog # : H00004852-M03

規格 : [100 ug]

[List All](#)

Specification

Product Description: Mouse monoclonal antibody raised against a partial recombinant NPY.

Immunogen: NPY (AAH29497, 29 a.a. ~ 97 a.a) partial recombinant protein with GST tag. MW of the GST tag alone is 26 KDa.

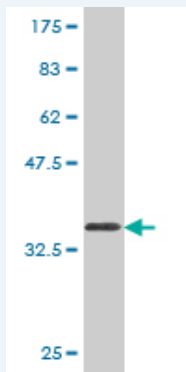
Sequence: YPSKPDNPGEDAPAEDMARYYSALRHYINLITRQRYGKRSSPETLISDLL MRESTENVPRTRELEDPAMW

Host: Mouse

Reactivity: Human

Isotype: IgG1 Kappa

Quality Control Testing: Antibody Reactive Against Recombinant Protein.



Western Blot detection against Immunogen (33.33 KDa) .

Storage Buffer: In 1x PBS, pH 7.4

Storage Instruction: Store at -20°C or lower. Aliquot to avoid repeated freezing and thawing.

MSDS: [Download](#)

Datasheet: [Download](#)

Publication Reference

1. [Increased Interstitial White Matter Neuron Density in the Dorsolateral Prefrontal Cortex of People with Schizophrenia.](#)
Yang Y, Fung SJ, Rothwell A, Tianmei S, Weickert CS. *Biol Psychiatry*. 2010 Oct 23. [Epub ahead of print]

Applications

Western Blot (Recombinant protein)

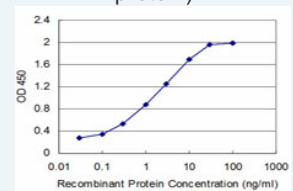
[Protocol Download](#)

Sandwich ELISA (Recombinant protein)

Application Image

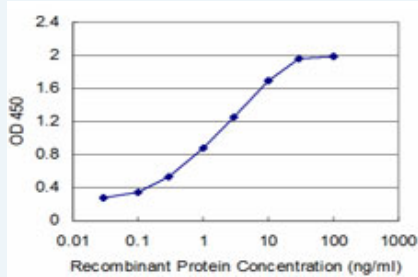
Western Blot (Recombinant protein)

Sandwich ELISA (Recombinant protein)



[enlarge](#)

ELISA



Detection limit for recombinant GST tagged NPY is approximately 0.03ng/ml as a capture antibody.

 [Protocol Download](#)

ELISA

Gene Information

Entrez GeneID: [4852](#)

GeneBank [BC029497](#)

Accession#:

Protein [AAH29497](#)

Accession#:

Gene Name: NPY

Gene Alias: PYY4

Gene Description: neuropeptide Y

Omim ID: [162640](#)

Gene Ontology: [Hyperlink](#)

Other Designations: -

Gene Pathway

[Adipocytokine signaling pathway](#) [Neuroactive ligand-receptor interaction](#)

Related Disease

[Adenocarcinoma](#) [Alcohol Withdrawal Delirium](#) [Alcoholism](#) [Alzheimer Disease](#) [Alzheimer disease](#) [Anorexia Nervosa](#) [Anxiety Disorders](#) [Appetite](#) [Arteriosclerosis](#) [Atherosclerosis](#) [Attention Deficit Disorder with Hyperactivity](#) [Autistic Disorder](#) [Birth Weight](#) [Body Weight](#) [Brain Ischemia](#) [Bulimia](#) [Cardiovascular Diseases](#) [Carotid Artery Diseases](#) [Celiac Disease](#)

... see more