



SZABO SCANDIC

Part of Europa Biosite

Produktinformation



Forschungsprodukte & Biochemikalien



Zellkultur & Verbrauchsmaterial



Diagnostik & molekulare Diagnostik



Laborgeräte & Service

Weitere Information auf den folgenden Seiten!
See the following pages for more information!



Lieferung & Zahlungsart

siehe unsere [Liefer- und Versandbedingungen](#)

Zuschläge

- Mindermengenzuschlag
- Trockeneiszuschlag
- Gefahrgutzuschlag
- Expressversand

SZABO-SCANDIC HandelsgmbH

Quellenstraße 110, A-1100 Wien

T. +43(0)1 489 3961-0

F. +43(0)1 489 3961-7

mail@szabo-scandic.com

www.szabo-scandic.com

[linkedin.com/company/szaboscandic](https://www.linkedin.com/company/szaboscandic) 

NOTCH2 polyclonal antibody (A01)

Catalog # : H00004853-A01

規格 : [50 uL]

List All

Specification

Product Description: Mouse polyclonal antibody raised against a partial recombinant NOTCH2.

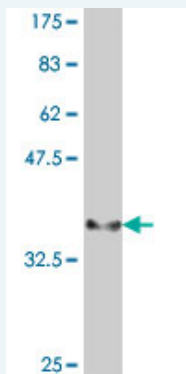
Immunogen: NOTCH2 (NP_077719, 27 a.a. ~ 136 a.a) partial recombinant protein with GST tag.

Sequence: QCRDGYEPCVNEGMCVYHNGTG YCKCPEGFLGEYCQHRDPCEKNRC QNGGTCVAQAMLGKATCRCASGFTGEDCQYSTSHPCFVSRPCLNGGT CHMLSRDTYPECTCQVG

Host: Mouse

Reactivity: Human

Quality Control Testing: Antibody Reactive Against Recombinant Protein.



Western Blot detection against Immunogen (38.21 KDa) .

Storage Buffer: 50 % glycerol

Storage Instruction: Store at -20°C or lower. Aliquot to avoid repeated freezing and thawing.

MSDS: [Download](#)

Datasheet: [Download](#)

Applications

Western Blot (Recombinant protein)

[Protocol Download](#)

ELISA

Gene Information

Entrez GeneID: [4853](#)

GeneBank Accession#: [NM_024408](#)

Application Image

Western Blot (Recombinant protein)

ELISA

Protein Accession#: [NP_077719](#)

Gene Name: NOTCH2

Gene Alias: AGS2,hN2

Gene Description: Notch homolog 2 (Drosophila)

Omim ID: [600275](#), [610205](#)

Gene Ontology: [Hyperlink](#)

Gene Summary: This gene encodes a member of the Notch family. Members of this Type 1 transmembrane protein family share structural characteristics including an extracellular domain consisting of multiple epidermal growth factor-like (EGF) repeats, and an intracellular domain consisting of multiple, different domain types. Notch family members play a role in a variety of developmental processes by controlling cell fate decisions. The Notch signaling network is an evolutionarily conserved intercellular signaling pathway which regulates interactions between physically adjacent cells. In Drosophila, notch interaction with its cell-bound ligands (delta, serrate) establishes an intercellular signaling pathway that plays a key role in development. Homologues of the notch-ligands have also been identified in human, but precise interactions between these ligands and the human notch homologues remain to be determined. This protein is cleaved in the trans-Golgi network, and presented on the cell surface as a heterodimer. This protein functions as a receptor for membrane bound ligands, and may play a role in vascular, renal and hepatic development. [provided by RefSeq]

Other Designations: OTTHUMP00000014035,OTTHUMP00000059536,notch 2

Gene Pathway

[Dorso-ventral axis formation Notch signaling pathway](#)

Related Disease

[Birth Weight](#) [Breast cancer](#) [Breast Neoplasms](#) [Carcinoma](#) [Cardiovascular Diseases](#)
[Diabetes Complications](#) [Diabetes Mellitus](#) [Diabetes Mellitus, Type 1](#)
[Diabetes Mellitus, Type 2](#) [Disease Susceptibility](#) [Dominance](#) [Cerebral Edema](#)
[Genetic Predisposition to Disease](#) [Glucose Intolerance](#) [HIV Infections](#) [Hyperglycemia](#)
[Insulin Resistance](#) [Kidney Failure](#) [Lymphoma, B-Cell, Marginal Zone](#)

... see more