



# SZABO SCANDIC

Part of Europa Biosite

## Produktinformation



Forschungsprodukte & Biochemikalien



Zellkultur & Verbrauchsmaterial



Diagnostik & molekulare Diagnostik



Laborgeräte & Service

Weitere Information auf den folgenden Seiten!  
See the following pages for more information!



### Lieferung & Zahlungsart

siehe unsere [Liefer- und Versandbedingungen](#)

### Zuschläge

- Mindermengenzuschlag
- Trockeneiszuschlag
- Gefahrgutzuschlag
- Expressversand

### SZABO-SCANDIC HandelsgmbH

Quellenstraße 110, A-1100 Wien

T. +43(0)1 489 3961-0

F. +43(0)1 489 3961-7

[mail@szabo-scandic.com](mailto:mail@szabo-scandic.com)

[www.szabo-scandic.com](http://www.szabo-scandic.com)

[linkedin.com/company/szaboscandic](https://www.linkedin.com/company/szaboscandic) 

## NOTCH3 monoclonal antibody (M02), clone 2E2

Catalog # : H00004854-M02

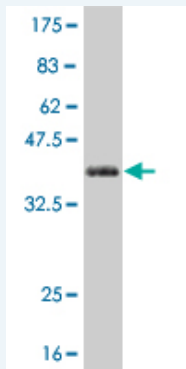
規格 : [ 100 ug ]

[List All](#)

### Specification

<b>Product Description:</b>	Mouse monoclonal antibody raised against a partial recombinant NOTCH3.
<b>Immunogen:</b>	NOTCH3 (NP_000426, 47 a.a. ~ 156 a.a) partial recombinant protein with GST tag. MW of the GST tag alone is 26 KDa.
<b>Sequence:</b>	SPCANGGRCTQLPSREAACLPPGWVGERCQLEDPC HSGPCAGRGV CQSSWAGTARFSCRCPRGFRGPDCSLPDPCLSSPCA HGARCSVGPD GRFLCSCPPGYQGRSCR
<b>Host:</b>	Mouse
<b>Reactivity:</b>	Human
<b>Isotype:</b>	IgG1 Kappa

**Quality Control Testing:** Antibody Reactive Against Recombinant Protein.



Western Blot detection against Immunogen (37.84 KDa) .

**Storage Buffer:** In 1x PBS, pH 7.4

**Storage Instruction:** Store at -20°C or lower. Aliquot to avoid repeated freezing and thawing.

**MSDS:** [Download](#)

**Datasheet:** [Download](#)

### Applications

**Western Blot (Recombinant protein)**

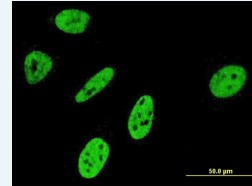
[Protocol Download](#)

**Immunofluorescence**

### Application Image

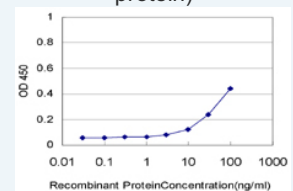
Western Blot (Recombinant protein)

Immunofluorescence



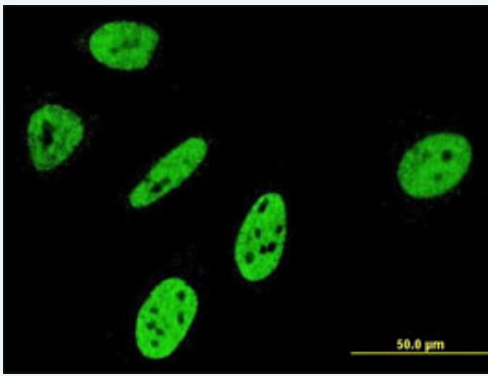
[enlarge](#)

Sandwich ELISA (Recombinant protein)



[enlarge](#)

ELISA

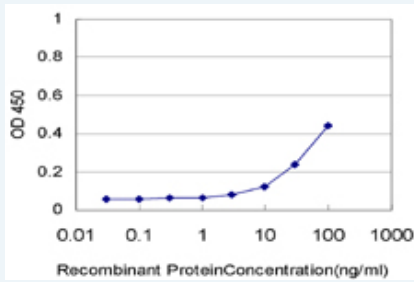


[enlarge this image](#)

Immunofluorescence of monoclonal antibody to NOTCH3 on HeLa cell . [antibody concentration 10 ug/ml]

[Protocol Download](#)

### Sandwich ELISA (Recombinant protein)



Detection limit for recombinant GST tagged NOTCH3 is approximately 3ng/ml as a capture antibody.

[Protocol Download](#)

### ELISA

### Gene Information

Entrez GeneID: [4854](#)

GeneBank [NM\\_000435](#)

Accession#:

Protein [NP\\_000426](#)

Accession#:

Gene Name: NOTCH3

Gene Alias: CADASIL, CASIL

Gene Description: Notch homolog 3 (Drosophila)

Description:

Omim ID: [125310](#), [600276](#)

Gene Ontology: [Hyperlink](#)

**Gene Summary:** This gene encodes the third discovered human homologue of the *Drosophila melanogaster* type I membrane protein notch. In *Drosophila*, notch interaction with its cell-bound ligands (delta, serrate) establishes an intercellular signalling pathway that plays a key role in neural development. Homologues of the notch-ligands have also been identified in human, but precise interactions between these ligands and the human notch homologues remains to be determined. Mutations in NOTCH3 have been identified as the underlying cause of cerebral autosomal dominant arteriopathy with subcortical infarcts and leukoencephalopathy (CADASIL). [provided by RefSeq]

Other Notch homolog 3

## Designations:

---

## Gene Pathway

---

[Dorso-ventral axis formation](#) [Notch signaling pathway](#)

## Related Disease

---

[Brain Infarction](#) [Brain Ischemia](#) [CADASIL](#) [Cardiovascular Diseases](#) [Cerebral Hemorrhage](#)  
[Cerebral Infarction](#) [Cerebrovascular Accident](#) [Cerebrovascular Disorders](#)  
[Chromosome Aberrations](#) [Cleft Lip](#) [Cleft Palate](#) [Cognition Disorders](#) [Dementia](#)  
[Dementia, Multi-Infarct](#) [Diabetes Mellitus, Type 2](#) [Disease Progression](#)  
[Dominance, Cerebral](#) [Edema](#) [Genetic Predisposition to Disease](#)

[... see more](#)

---

[服務條款](#) | [隱私權政策](#) | [著作及商標](#) | [網站地圖](#)

©2016 亞諾法生技股份有限公司 Abnova Corporation. 版權所有.