



SZABO SCANDIC

Part of Europa Biosite

Produktinformation



Forschungsprodukte & Biochemikalien



Zellkultur & Verbrauchsmaterial



Diagnostik & molekulare Diagnostik



Laborgeräte & Service

Weitere Information auf den folgenden Seiten!
See the following pages for more information!



Lieferung & Zahlungsart

siehe unsere [Liefer- und Versandbedingungen](#)

Zuschläge

- Mindermengenzuschlag
- Trockeneiszuschlag
- Gefahrgutzuschlag
- Expressversand

SZABO-SCANDIC HandelsgmbH

Quellenstraße 110, A-1100 Wien

T. +43(0)1 489 3961-0

F. +43(0)1 489 3961-7

mail@szabo-scandic.com

www.szabo-scandic.com

[linkedin.com/company/szaboscandic](https://www.linkedin.com/company/szaboscandic) 

NOVA1 monoclonal antibody (M12), clone 3F7

Catalog # : H00004857-M12

規格 : [100 ug]

[List All](#)

Specification

Product Description: Mouse monoclonal antibody raised against a partial recombinant NOVA1.

Immunogen: NOVA1 (NP_002506.2, 1 a.a. ~ 507 a.a) partial recombinant protein with GST tag. MW of the GST tag alone is 26 KDa.

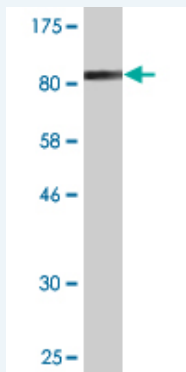
Sequence:
 MMAAAPIQQNGTHTGVPIDLDPPDSRKRPLEAPPEAGSTKRTNTGEDG
 QYFLKVLIPSYAAGSIIGKGGQTIIVQLQKETGATIKLSKSKDFYPGTTERV
 CLIQGTVEALNAVHGFIAEKIREMPQNVAKTEPVLSILQPQTIVNPDRKQTL
 PSSPTTTKSSPDPMTTSTRANQVKIIPNSTAGLIIGKGGATVKAVMEQSG
 AWWQLSQKPDGINLQERVVTVSGEPEQNRKAVELIQIKQEDPQSGSCLNI
 SYANVTGPVANSNPTGSPYANTAEVLPTAAAAAGLLGHANLAGVAAFP
 VLSGFTGNDLVAITSALNLTASYGYNLNTLGLGLSQAATGALAAAAASA
 NPAAAAANLLATYASEASASGSTAGGTAGTFALGSLAAATAATNGYFGA
 ASPLAASAILGTEKSTDGSKDWVEIAPENLVGAILGKGGKTLVEYQELTG
 ARIQISKKGEFVPGTRNRKVTITGTPAATQAAQYLITQRITYEQGVRAANP
 QKVG

Host: Mouse

Reactivity: Human

Isotype: IgG2a Kappa

Quality Control Testing: Antibody Reactive Against Recombinant Protein.



Western Blot detection against Immunogen (81.29 KDa) .

Storage Buffer: In 1x PBS, pH 7.4

Storage Instruction: Store at -20°C or lower. Aliquot to avoid repeated freezing and thawing.

MSDS: [Download](#)

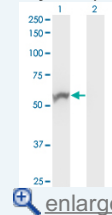
Datasheet: [Download](#)

Applications

Western Blot (Transfected lysate)

Application Image

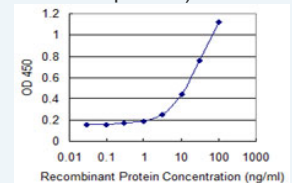
Western Blot (Transfected lysate)



[enlarge](#)

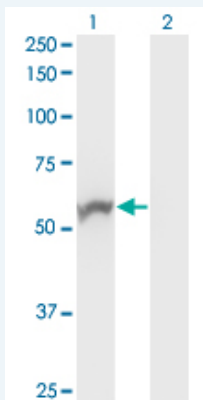
Western Blot (Recombinant protein)

Sandwich ELISA (Recombinant protein)



[enlarge](#)

ELISA



Western Blot analysis of NOVA1 expression in transfected 293T cell line by NOVA1 monoclonal antibody (M12), clone 3F7.

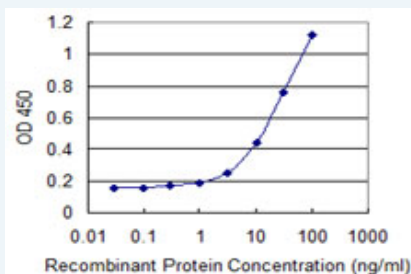
Lane 1: NOVA1 transfected lysate (Predicted MW: 51.7 KDa).
Lane 2: Non-transfected lysate.

[Protocol Download](#)

Western Blot (Recombinant protein)

[Protocol Download](#)

Sandwich ELISA (Recombinant protein)



Detection limit for recombinant GST tagged NOVA1 is 1 ng/ml as a capture antibody.

[Protocol Download](#)

ELISA

Gene Information

Entrez GeneID: [4857](#)

GeneBank [NM_002515](#)

Accession#:

Protein [NP_002506.2](#)

Accession#:

Gene Name: NOVA1

Gene Alias: Nova-1

Gene neuro-oncological ventral antigen 1

Description:

Omim ID: [602157](#)

Gene Ontology: [Hyperlink](#)

Gene Summary: This gene encodes a neuron-specific RNA-binding protein, a member of the Nova family of paraneoplastic disease antigens, that is recognized and inhibited by paraneoplastic antibodies. These antibodies are found in the sera of patients with paraneoplastic opsoclonus-ataxia, breast cancer, and small cell lung cancer. Alternatively spliced transcripts encoding distinct isoforms have been described. [provided by RefSeq]

Other paraneoplastic Ri antigen, ventral neuron-specific protein 1

Designations:

Related Disease

[Cardiovascular Diseases](#) [Genetic Predisposition to Disease](#)
[Parkinson Disease](#), [Secondary Schizophrenia](#) [Ventricular Dysfunction, Left](#)

[服務條款](#) | [隱私權政策](#) | [著作及商標](#) | [網站地圖](#)

©2016 亞諾法生技股份有限公司 Abnova Corporation. 版權所有.