



SZABO SCANDIC

Part of Europa Biosite

Produktinformation



Forschungsprodukte & Biochemikalien



Zellkultur & Verbrauchsmaterial



Diagnostik & molekulare Diagnostik



Laborgeräte & Service

Weitere Information auf den folgenden Seiten!
See the following pages for more information!



Lieferung & Zahlungsart

siehe unsere [Liefer- und Versandbedingungen](#)

Zuschläge

- Mindermengenzuschlag
- Trockeneiszuschlag
- Gefahrgutzuschlag
- Expressversand

SZABO-SCANDIC HandelsgmbH

Quellenstraße 110, A-1100 Wien

T. +43(0)1 489 3961-0

F. +43(0)1 489 3961-7

mail@szabo-scandic.com

www.szabo-scandic.com

[linkedin.com/company/szaboscandic](https://www.linkedin.com/company/szaboscandic) 

NPC1 monoclonal antibody (M02), clone 4H2

Catalog # : H00004864-M02

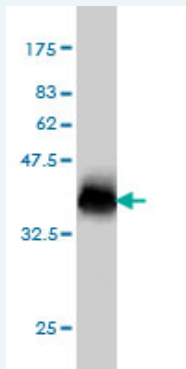
規格 : [100 ug]

[List All](#)

Specification

Product Description:	Mouse monoclonal antibody raised against a partial recombinant NPC1.
Immunogen:	NPC1 (AAH63302, 151 a.a. ~ 250 a.a) partial recombinant protein with GST tag. MW of the GST tag alone is 26 KDa.
Sequence:	GFANAMYNACRDVEAPSSNDKALGLLCGKDADACNATNWIEYMFNKDN GQAPFTITPVFSDFPVHGMPEMNNATKGCDESVDVETAPCSCQDCSVC GPK
Host:	Mouse
Reactivity:	Human
Isotype:	IgG2a Kappa

Quality Control Testing: Antibody Reactive Against Recombinant Protein.



Western Blot detection against Immunogen (36.63 KDa) .

Storage Buffer: In 1x PBS, pH 7.4

Storage Instruction: Store at -20°C or lower. Aliquot to avoid repeated freezing and thawing.

MSDS: [Download](#)

Datasheet: [Download](#)

Publication Reference

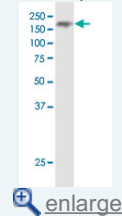
1. NADH-cytochrome b5 reductase 3 promotes colonization and metastasis formation and is a prognostic marker of disease-free and overall survival in estrogen receptor-negative breast cancer.
Lund RR, Leth-Larsen R, Caterino TD, Terp MG, Nissen J, Laenholm AV, Jensen ON, Ditzel HJ. Mol Cell Proteomics. 2015 Sep 8. [Epub ahead of print]

Applications

Western Blot (Cell lysate)

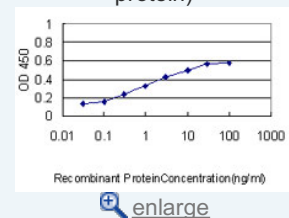
Application Image

Western Blot (Cell lysate)

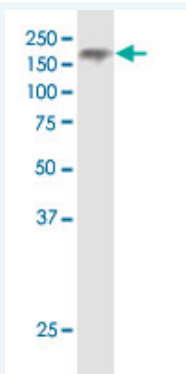


Western Blot (Recombinant protein)

Sandwich ELISA (Recombinant protein)



ELISA



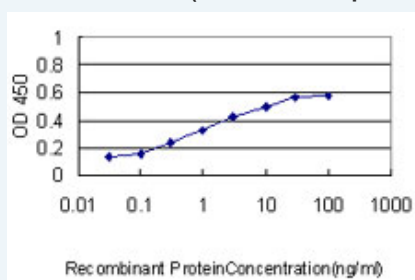
NPC1 monoclonal antibody (M02), clone 4H2. Western Blot analysis of NPC1 expression in HeLa.

[Protocol Download](#)

Western Blot (Recombinant protein)

[Protocol Download](#)

Sandwich ELISA (Recombinant protein)



Detection limit for recombinant GST tagged NPC1 is approximately 0.03ng/ml as a capture antibody.

[Protocol Download](#)

ELISA

Gene Information

Entrez GeneID: [4864](#)

GeneBank [BC063302](#)

Accession#:

Protein [AAH63302](#)

Accession#:

Gene Name: NPC1

Gene Alias: NPC

Gene Description: Niemann-Pick disease, type C1

Description:

Omim ID: [257220](#), [607623](#)

Gene Ontology: [Hyperlink](#)

Gene Summary: This gene encodes a large protein that resides in the limiting membrane of endosomes and lysosomes and mediates intracellular cholesterol trafficking via binding of cholesterol to its N-terminal domain. It is predicted to have a cytoplasmic C-terminus, 13 transmembrane domains, and 3 large loops in the lumen of the endosome - the last loop being at the N-terminus. This protein transports low-density lipoproteins to late endosomal/lysosomal compartments where they are hydrolyzed and released as free cholesterol. Defects in this gene cause Niemann-Pick type C disease, a rare autosomal recessive neurodegenerative

disorder characterized by over accumulation of cholesterol and glycosphingolipids in late endosomal/lysosomal compartments

Other Designations: -

Gene Pathway

Lysosome

Related Disease

Alzheimer Disease Alzheimer disease Birth Weight Cardiovascular Diseases
Coronary Artery Disease Coronary Disease Diabetes Complications Diabetes Mellitus
Diabetes Mellitus, Type 2 Edema Genetic Predisposition to Disease
Lymphoma, Non-Hodgkin Metabolic Syndrome X Neoplasms
Niemann-Pick Disease, Type C Obesity Osteoporosis Overweight

[服務條款](#) | [隱私權政策](#) | [著作及商標](#) | [網站地圖](#)

©2016 亞諾法生技股份有限公司 Abnova Corporation. 版權所有.